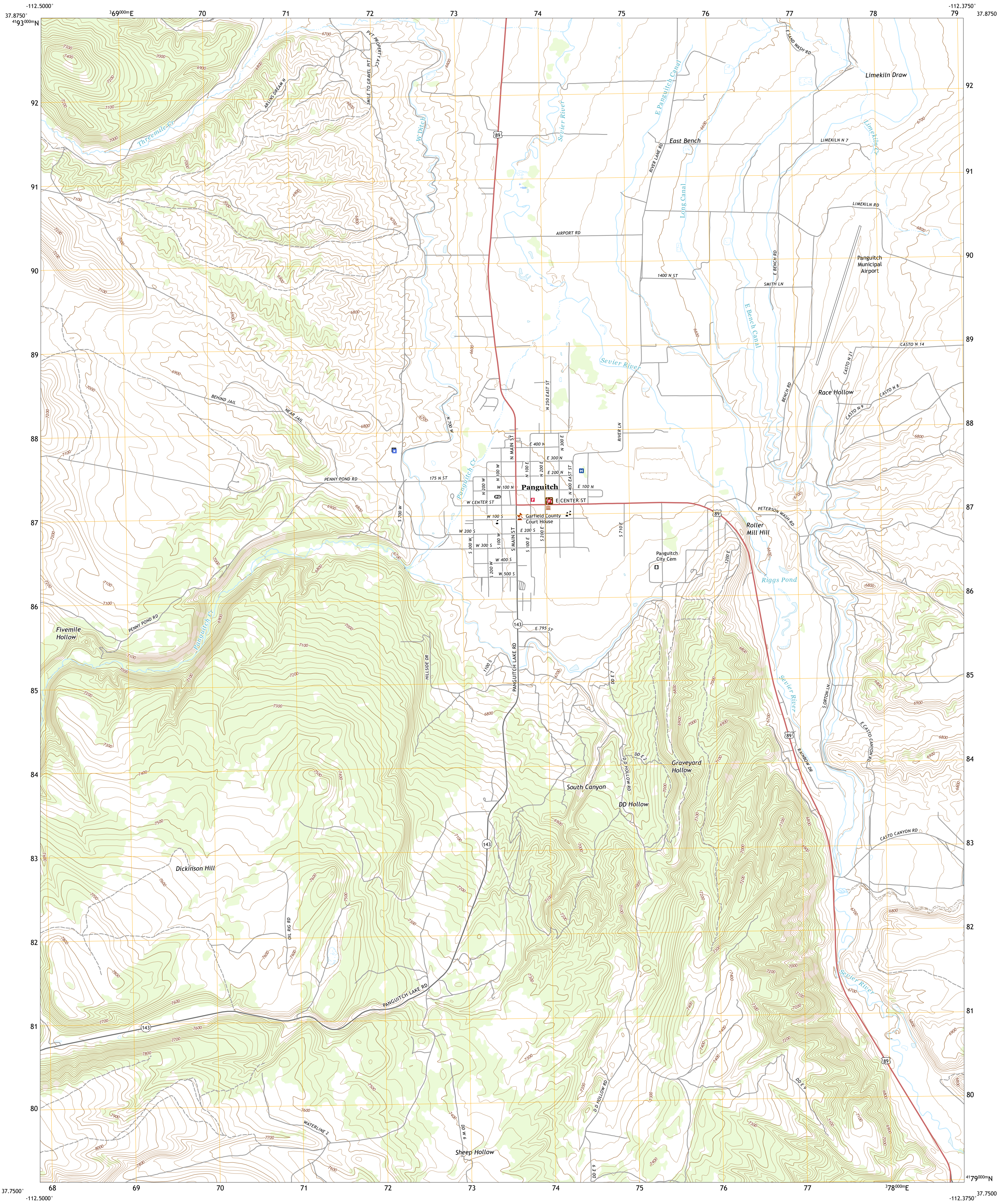




U.S. DEPARTMENT OF THE INTERIOR  
U.S. GEOLOGICAL SURVEY

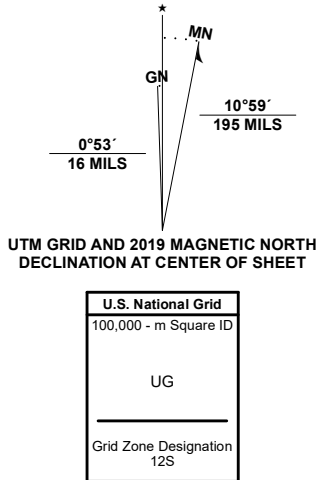


PANGUITCH QUADRANGLE  
UTAH - GARFIELD COUNTY  
7.5-MINUTE SERIES

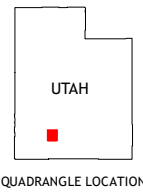


Produced by the United States Geological Survey

North American Datum of 1983 (NAD83)  
World Geodetic System of 1984 (WGS84), Projection and  
1 000-meter grid/Universal Transverse Mercator, Zone 12S  
This map is not a legal document. Boundaries may be  
generalized for this map scale. Private lands within government  
reservations may not be shown. Obtain permission before  
entering private lands.  
Imagery.....NAIP, July 2016 - October 2016  
Roads.....U.S. Census Bureau, 2016  
Names.....GNIS, 1979 - 2020  
Hydrography.....National Hydrography Dataset, 1989 - 2019  
Contours.....National Elevation Dataset, 2019  
Boundaries.....Multiple sources: see metadata file, 2017 - 2018  
Public Land Survey System.....BLM, 2019  
Wetlands.....FWS National Wetlands Inventory Not Available



CONTOUR INTERVAL 20 FEET  
NORTH AMERICAN VERTICAL DATUM OF 1988  
This map was produced to conform with the  
National Geospatial Program US Topo Product Standard, 2011.  
A metadata file associated with this product is draft version 0.6.18



1	2	3
4	5	6
7	8	9

1 Little Creek Peak  
2 Pangitch NW  
3 Blind Spring Mountain  
4 Fivemile Ridge  
5 Casto Canyon  
6 Haycock Mountain  
7 Hatch  
8 Wilson Peak

ROAD CLASSIFICATION  
Expressway  
Secondary Hwy  
Ramp  
Interstate Route  
Local Connector  
Local Road  
4WD  
US Route  
State Route

PANGUITCH, UT  
2020

