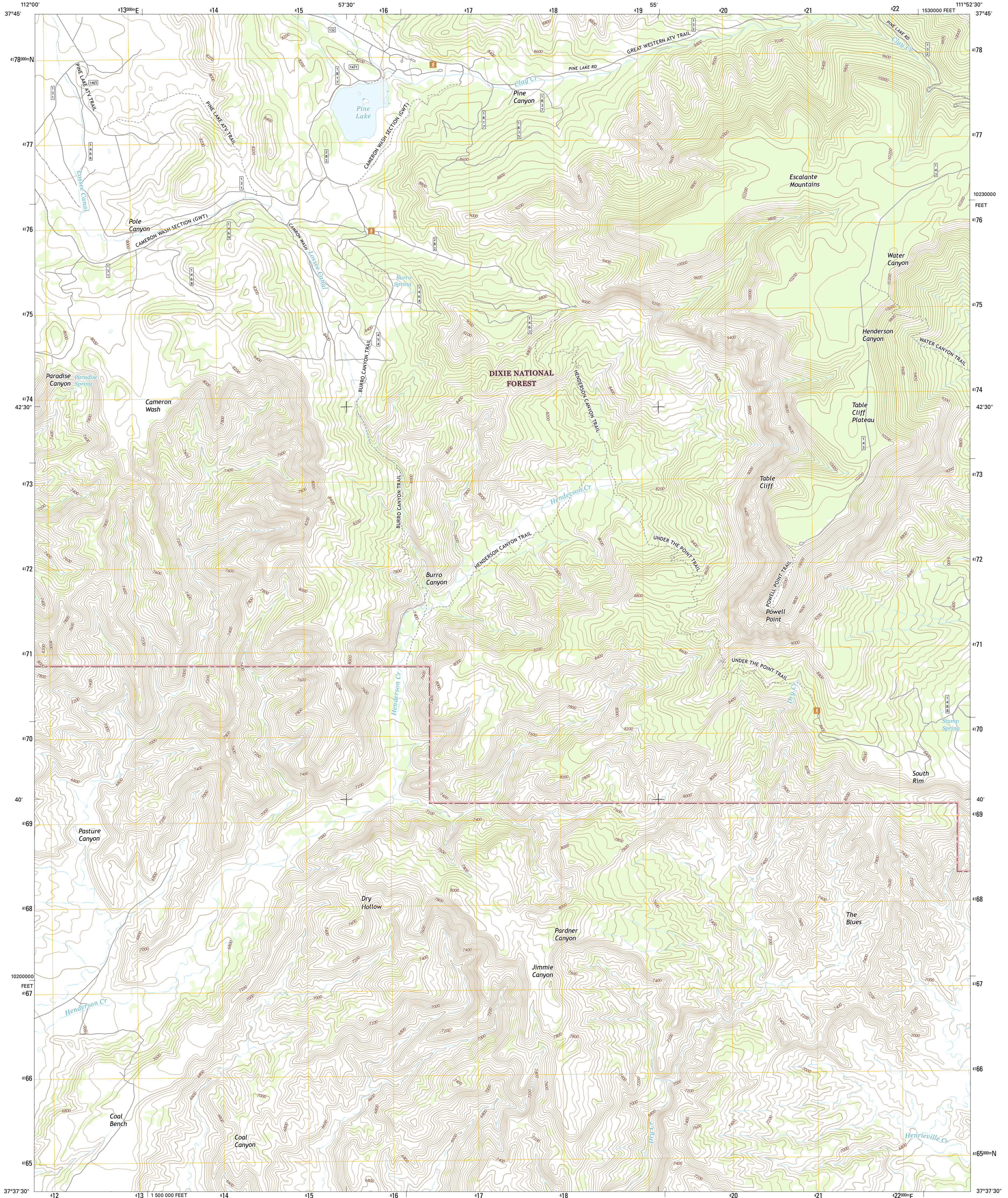




U.S. DEPARTMENT OF THE INTERIOR
U.S. GEOLOGICAL SURVEY

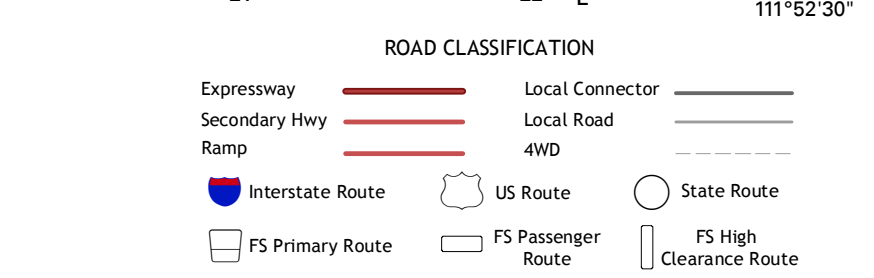
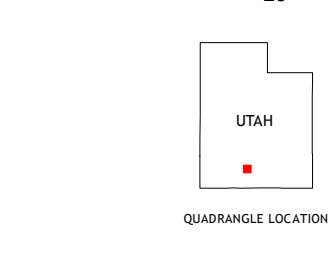
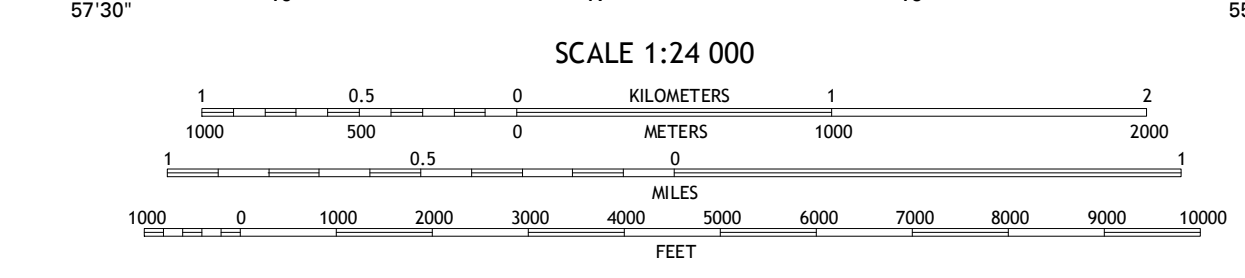
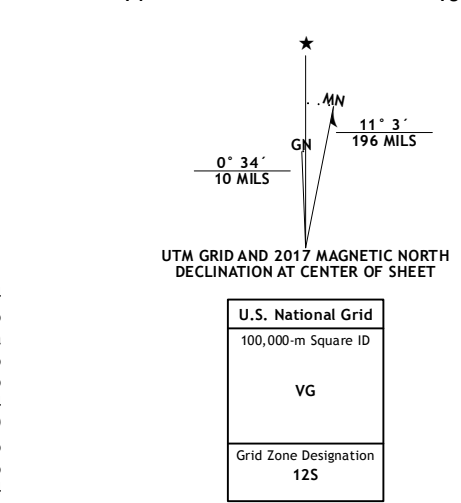


PINE LAKE QUADRANGLE
UTAH-GARFIELD CO.
7.5-MINUTE SERIES



Produced by the United States Geological Survey
 North American Datum of 1983 (NAD83)
 World Geodetic System of 1984 (WGS84) Projection and
 1 000-meter grid; Universal Transverse Mercator, Zone 12S
 10 000-foot ticks; Utah Coordinate System of 1983 (south zone)
 This map is not a legal document. Boundaries may be
 generalized for this map scale. Private lands within government
 reservations may not be shown. Obtain permission before
 entering private lands.

Imagery: NADP, October 2014
 Roads: U.S. Census Bureau, 2015 - 2016
 Roads within US Forest Service Lands: FSTopo Data
 with limited Forest Service updates, 2012 - 2016
 Names: GNIS, 2016
 Hydrography: National Hydrography Dataset, 2014
 Contours: National Elevation Dataset, 1999
 Boundaries: Multiple sources; see metadata file 1972 - 2016
 Public Land Survey System: BLM, 2016
 Wetlands: FWS National Wetlands Inventory 1977 - 2014



1	2	3
4	5	6
7	8	

ADJOINING QUADRANGLES

- 1 Flake Mountain East
- 2 Sweetwater Creek
- 3 Griffin Point
- 4 Tropic Canyon
- 5 Upper Valley
- 6 Cannonville
- 7 Henrieville
- 8 Canaan Peak

PINE LAKE, UT
2017



NSN 7540-01-000-0000
 U.S. GEOLOGICAL SURVEY
 NGA REF. NO. 24444444