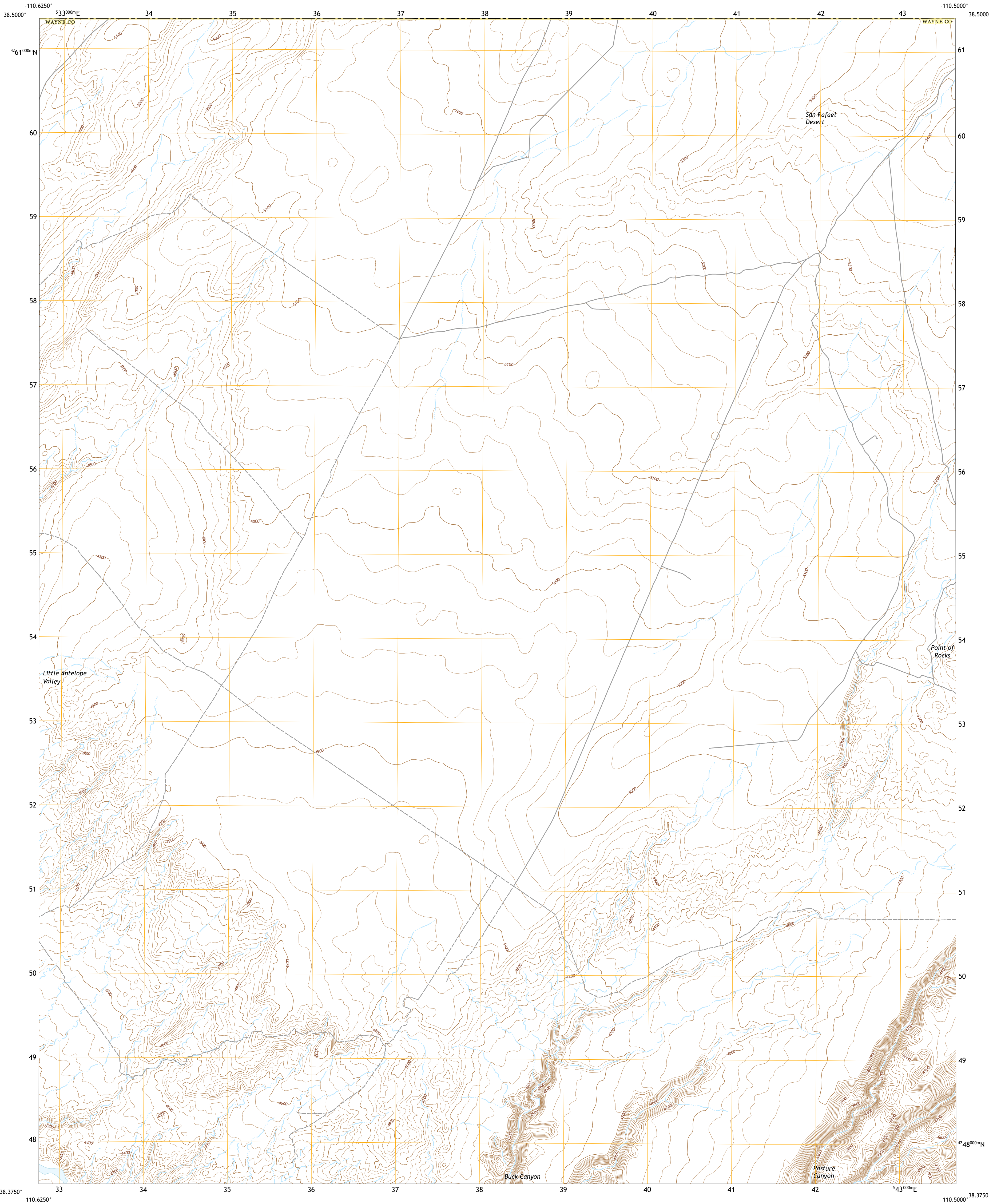




U.S. DEPARTMENT OF THE INTERIOR
U.S. GEOLOGICAL SURVEY



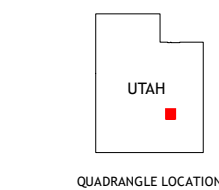
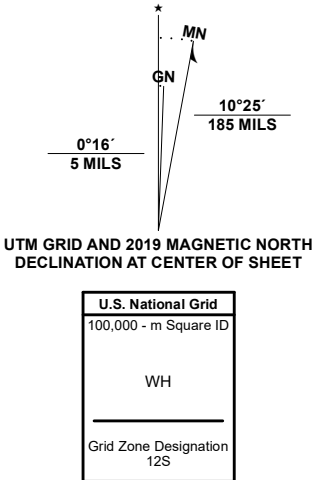
POINT OF ROCKS WEST QUADRANGLE
UTAH
7.5-MINUTE SERIES



Produced by the United States Geological Survey

North American Datum of 1983 (NAD83)
World Geodetic System of 1984 (WGS84) - Projection and
1 000-meter grid/Universal Transverse Mercator, Zone 12S
This map is not a legal document. Boundaries may be
generalized for this map scale. Private lands within government
reservations may not be shown. Obtain permission before
entering private lands.

Imagery.....NAIP, June 2016 - October 2016
Roads.....U.S. Census Bureau, 2016
Names.....GNIS, 1979 - 2018
Hydrography.....National Hydrography Dataset, 2001 - 2019
Contours.....National Elevation Dataset, 1999
Boundaries.....Multiple sources: see metadata file, 2017 - 2018
Public Land Survey System.....BLM, 2019
Wetlands.....FWS National Wetlands Inventory 1980 - 1986



1	2	3
4	5	6
7	8	9

1 Goblin Valley
2 Gilson Butte
3 The Flat Tops
4 The Notch
5 Point of Rocks East
6 Hanksville
7 Angel Cove
8 Angel Point

ROAD CLASSIFICATION
Expressway
Secondary Hwy
Ramp
Local Connector
Local Road
4WD
US Route
State Route

POINT OF ROCKS WEST, UT

2020

