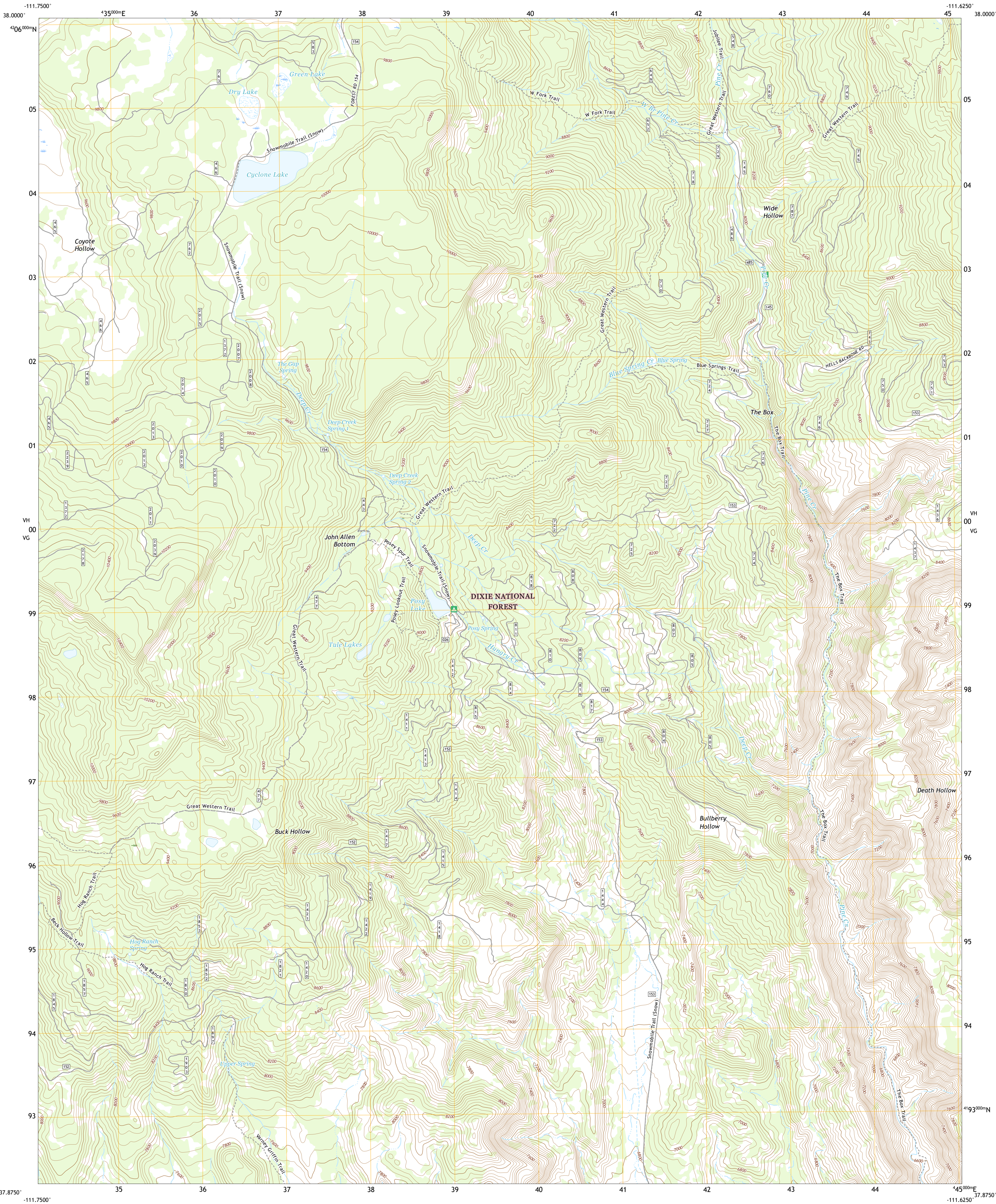




U.S. DEPARTMENT OF THE INTERIOR
U.S. GEOLOGICAL SURVEY

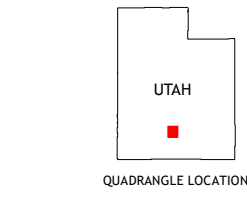
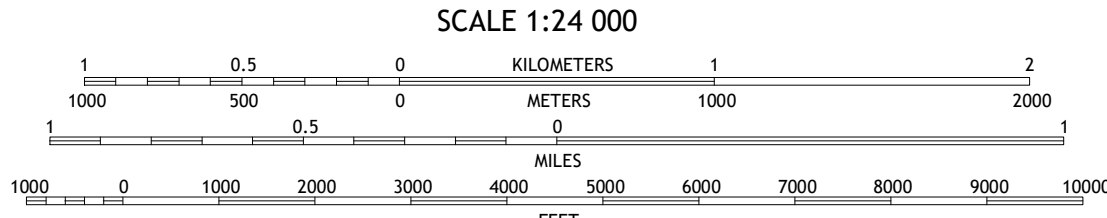
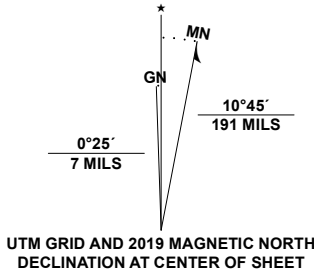


POSY LAKE QUADRANGLE
UTAH - GARFIELD COUNTY
7.5-MINUTE SERIES



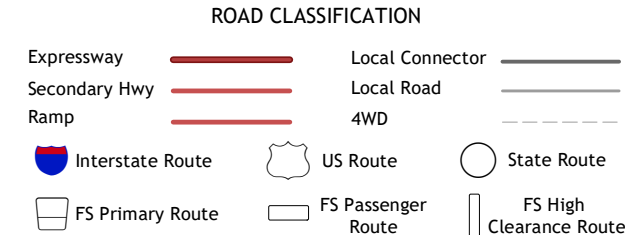
Produced by the United States Geological Survey
North American Datum of 1983 (NAD83)
World Geodetic System of 1984 (WGS84). Projection and
1 000-meter grid: Universal Transverse Mercator, Zone 12S
This map is not a legal document. Boundaries may be
generalized for this map scale. Private lands within government
reservations may not be shown. Obtain permission before
entering private lands.

Imagery.....NAIP, July 2016 - October 2016
Roads.....U.S. Census Bureau, Not Available
Roads within US Forest Service Lands.....FS Topo Data
with limited Forest Service updates, 2013
Names.....GNIS, 1979 - 2020
Hydrography.....National Hydrography Dataset, 2002 - 2019
Contours.....National Elevation Dataset, 1999
Boundaries.....Multiple sources; see metadata file
Public Land Survey System.....BLM, 2019
Wetlands.....FWS National Wetlands Inventory 1980 - 1986



1	2	3
4	5	6
7	8	9

1 Pollywog Lake
2 Big Lake
3 Jacobs Reservoir
4 Barker Reservoir
5 Roger Peak
6 Griffin Point
7 Wide Hollow Reservoir
8 Escalante



Check with local Forest Service unit
for current travel conditions and restrictions.

POSY LAKE, UT
2020

