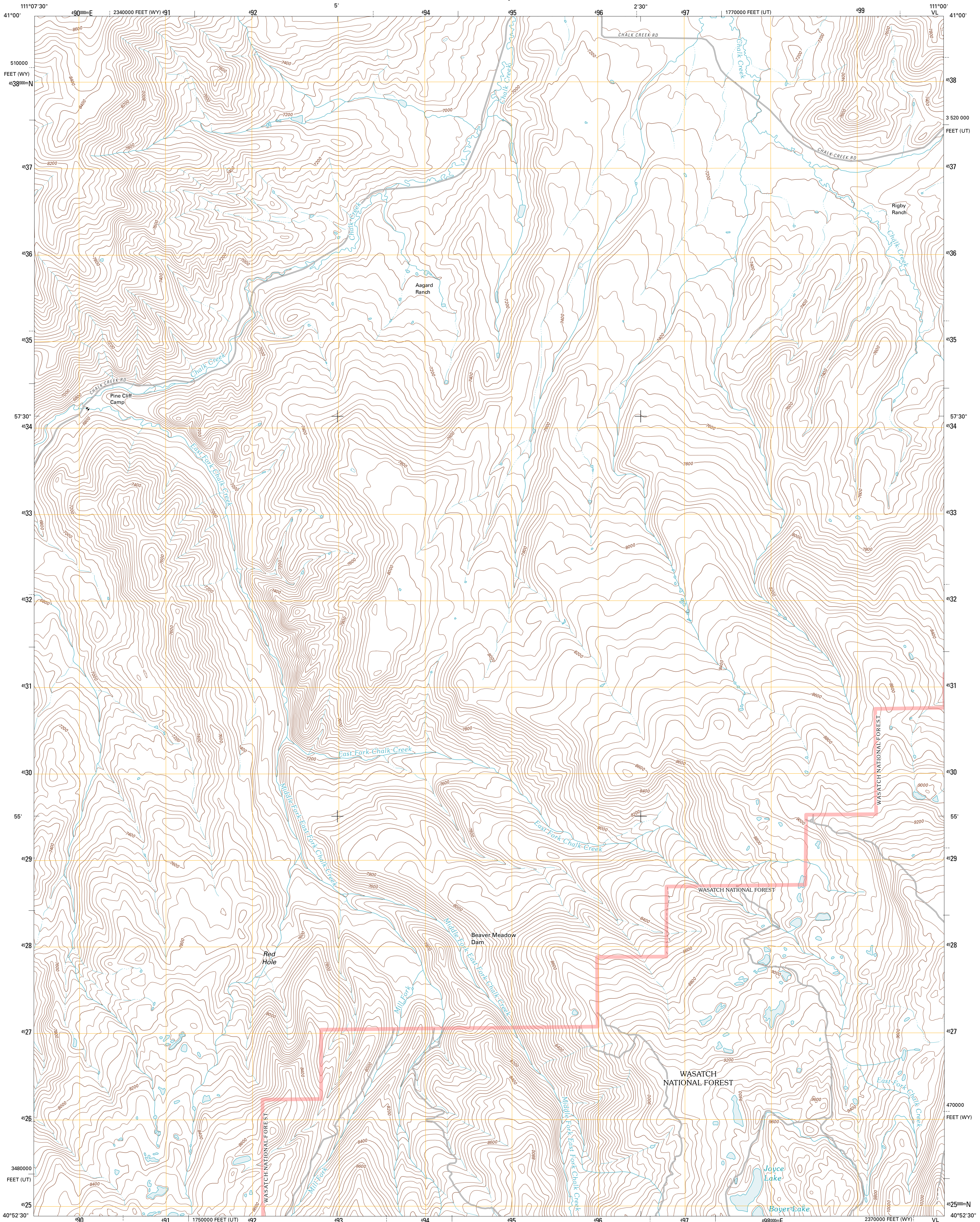




U.S. DEPARTMENT OF THE INTERIOR
U. S. GEOLOGICAL SURVEY

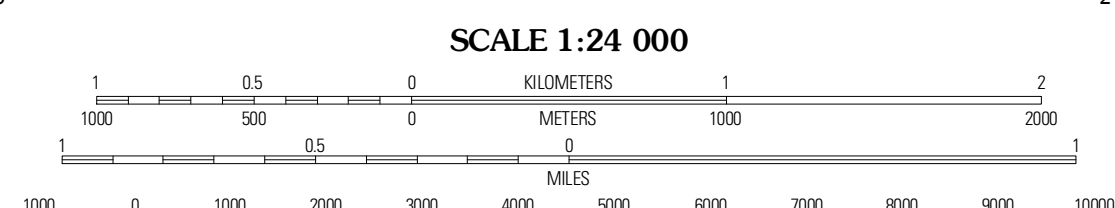
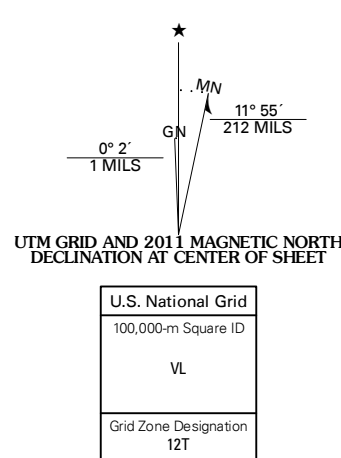


RED HOLE QUADRANGLE
UTAH-WYOMING
7.5-MINUTE SERIES

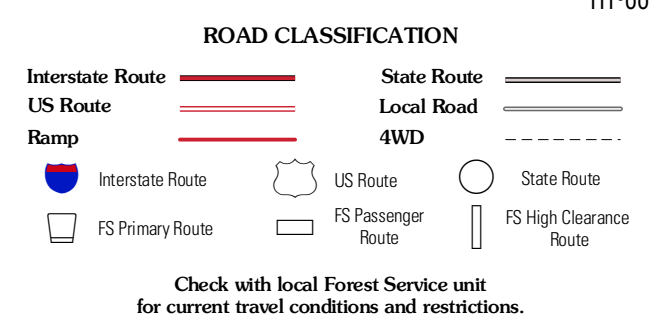
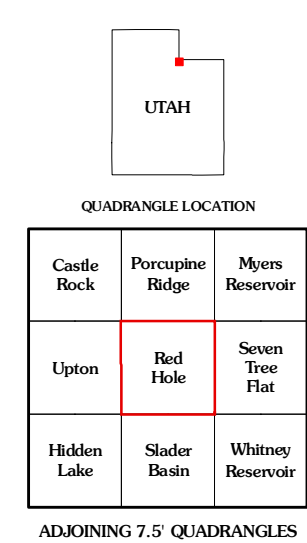


Produced by the United States Geological Survey
North American Datum of 1983 (NAD83)
World Geodetic System of 1984 (WGS84) Projection and
1 000-meter grid: Universal Transverse Mercator, Zone 12T
10 000-foot ticks: Utah Coordinate System of 1983 (north
zone), Wyoming Coordinate System of 1983 (west zone)

Imagery: N/AIP, July 2009
Roads: ©2006-2010 Tele Atlas
Roads within US Forest Service Lands: FSTopo Data
with limited Forest Service updates, 2009
Names: GNS, 2010
Hydrography: National Hydrography Dataset, 2009
Contours: National Elevation Dataset, 2002



CONTOUR INTERVAL 40 FEET
NORTH AMERICAN VERTICAL DATUM OF 1988
This map was produced to conform with version 0.5.10 of the
draft USGS Standards for 7.5-Minute Quadrangle Maps.
A metadata file associated with this product is draft version 0.5.12



Check with local Forest Service unit
for current travel conditions and restrictions.

Castle Rock	Porcupine Ridge	Myers Reservoir
Upton	Red Hole	Seven Tree Flat
Hidden Lake	Stader Basin	Whitney Reservoir

RED HOLE, UT-WY
2011

ADJOINING 7.5' QUADRANGLES