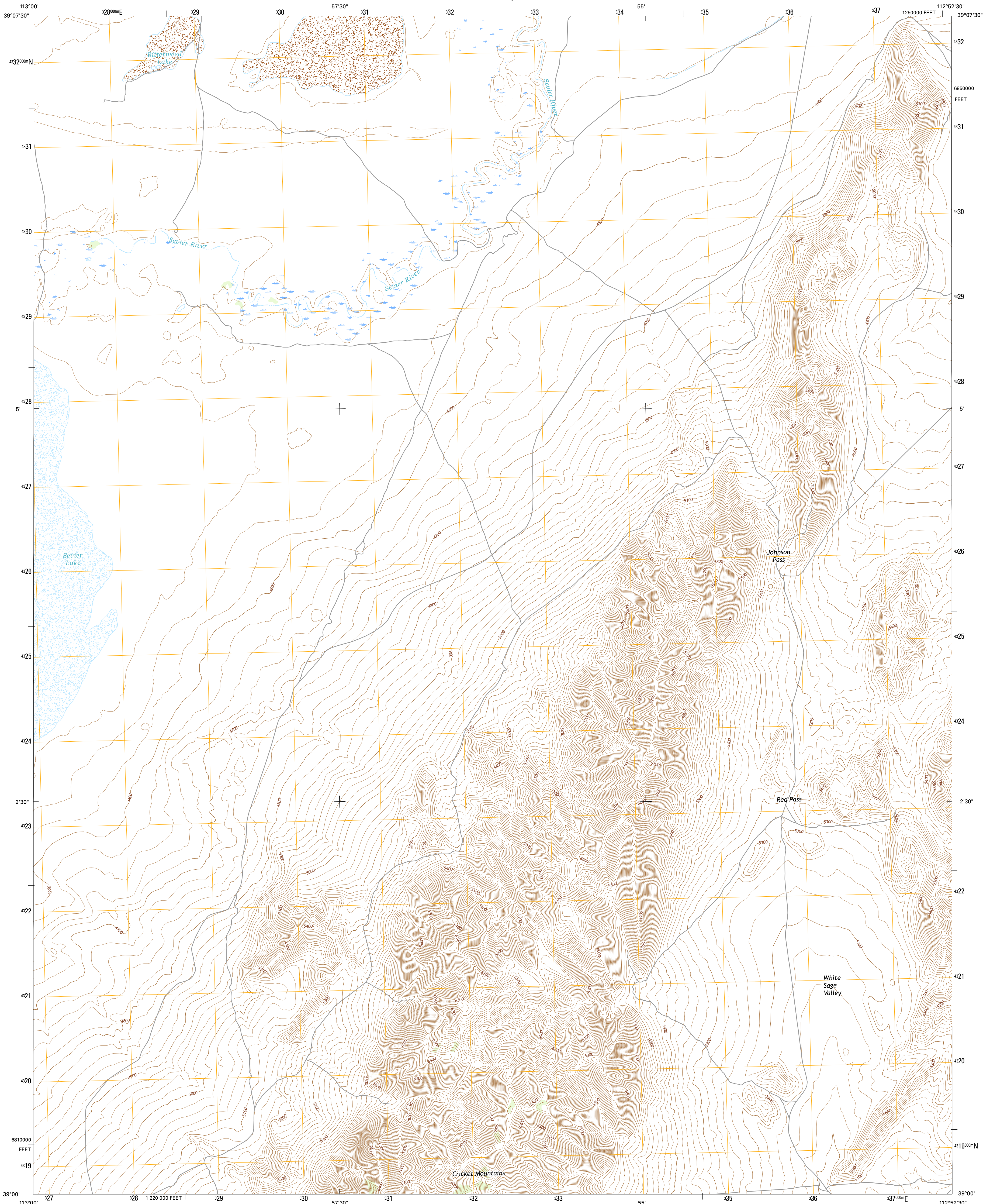




U.S. DEPARTMENT OF THE INTERIOR
U.S. GEOLOGICAL SURVEY



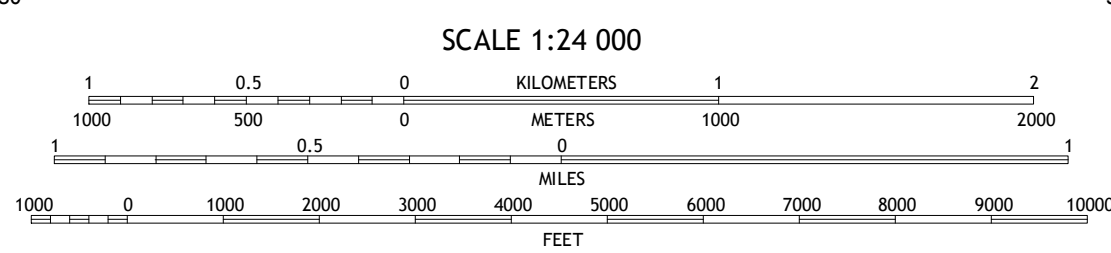
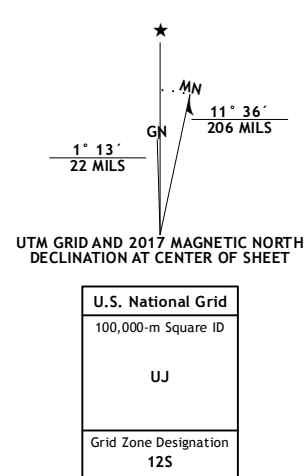
RED PASS QUADRANGLE
UTAH-MILLARD CO.
7.5-MINUTE SERIES



Produced by the United States Geological Survey
 North American Datum of 1983 (NAD83)
 World Geodetic System of 1984 (WGS84) Projection and
 1 000-meter grid: Universal Transverse Mercator, Zone 12S
 10 000-foot ticks: Utah Coordinate System of 1983 (central zone)

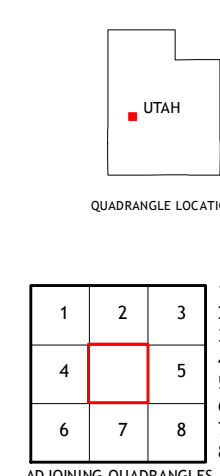
This map is not a legal document. Boundaries may be generalized for this map scale. Private lands within government reservations may not be shown. Obtain permission before entering private lands.

Imagery.....NIP, October 2014
 Roads.....U.S. Census Bureau, 2015 - 2016
 Names.....GNIS, 2016
 Hydrography.....National Hydrography Dataset, 2014
 Contours.....National Elevation Dataset, 2002
 Boundaries.....Multiple sources; see metadata file 1972 - 2016
 Public Land Survey System.....BLM, 2016
 Wetlands.....FWS National Wetlands Inventory 1977 - 2014



CONTOUR INTERVAL 20 FEET
 NORTH AMERICAN VERTICAL DATUM OF 1988

This map was produced to conform with the
 National Geospatial Program US Topo Product Standard, 2011.
 A metadata file associated with this product is draft version 0.6.19



ROAD CLASSIFICATION

Expressway ——— Local Connector ———
 Secondary Hwy ——— Local Road ———
 Ramp ——— 4WD ———
 Interstate Route ——— US Route ——— State Route ———

ADJOINING QUADRANGLES

1	2	3
4	5	6
7	8	

1 Long Ridge
 2 Rocky Knoll
 3 Pat Mountain
 4 Long Ridge SE
 5 Neels
 6 Sevier Lake NE
 7 Candland Spring
 8 Borden

RED PASS, UT
 2017

