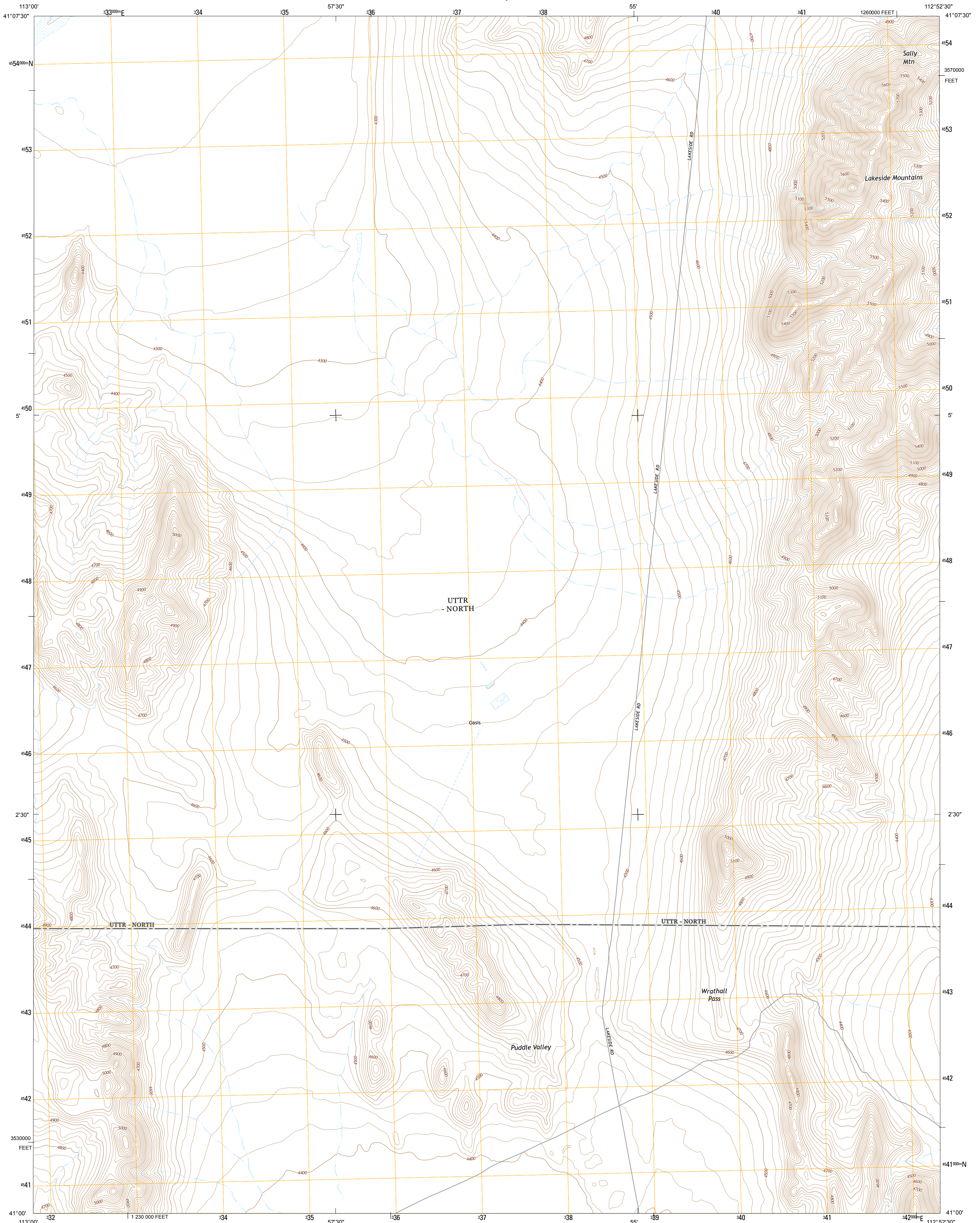




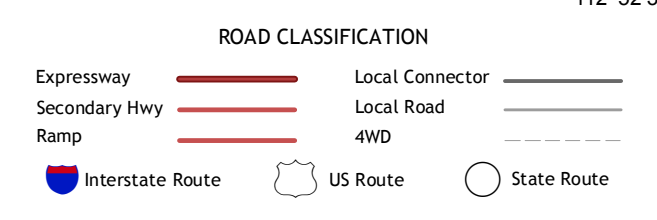
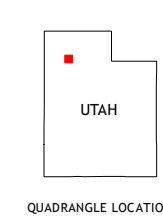
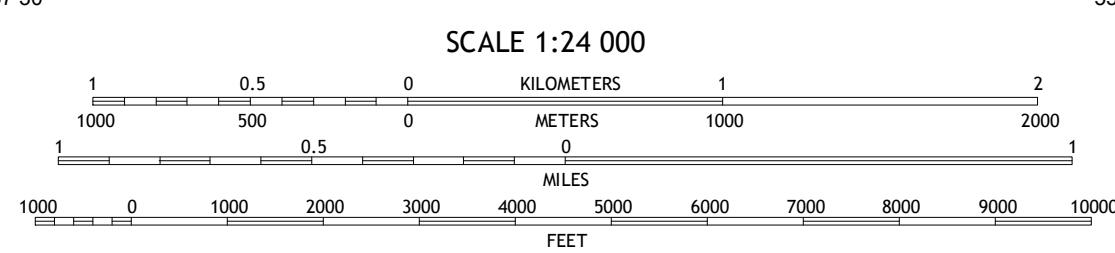
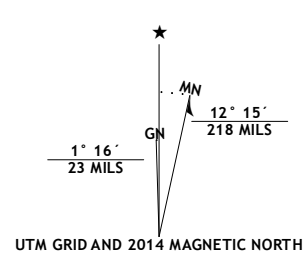
U.S. DEPARTMENT OF THE INTERIOR
U.S. GEOLOGICAL SURVEY



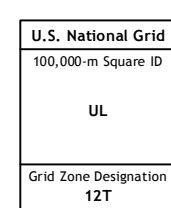
SALLY MOUNTAIN QUADRANGLE
UTAH-BOX ELDER CO.
7.5-MINUTE SERIES



Produced by the United States Geological Survey
North American Datum of 1983 (NAD83)
World Geodetic System of 1984 (WGS84). Projection and
1 000-meter grid: Universal Transverse Mercator, Zone 12T
10 000-foot ticks: Utah Coordinate System of 1983 (north zone)
This map is not a legal document. Boundaries may be
generalized for this map scale. Private lands within government
reservations may not be shown. Obtain permission before
entering private lands.



Imagery: N.A.I.P., July 2011
Roads: HERE, ©2013
Names: GNIS, 2013
Hydrography: National Hydrography Dataset, 2011
Contours: National Elevation Dataset, 2002
Boundaries: Multiple sources; see metadata file 1972 - 2013
Public Land Survey System: BLM, 2011



CONTOUR INTERVAL 20 FEET
NORTH AMERICAN VERTICAL DATUM OF 1988

This map was produced to conform with the
National Geospatial Program US Topo Product Standard, 2011.
A metadata file associated with this product is draft version 0.6.16

1	2	3
4	5	6
7	8	

ADJOINING QUADRANGLES

- Hogup Ridge South
- Strongs Knob
- Lakeside
- Round Mountain
- Deardens Knoll
- Grassy Mountains
- Puddle Valley Knolls
- Craner Peak

SALLY MOUNTAIN, UT
2014

