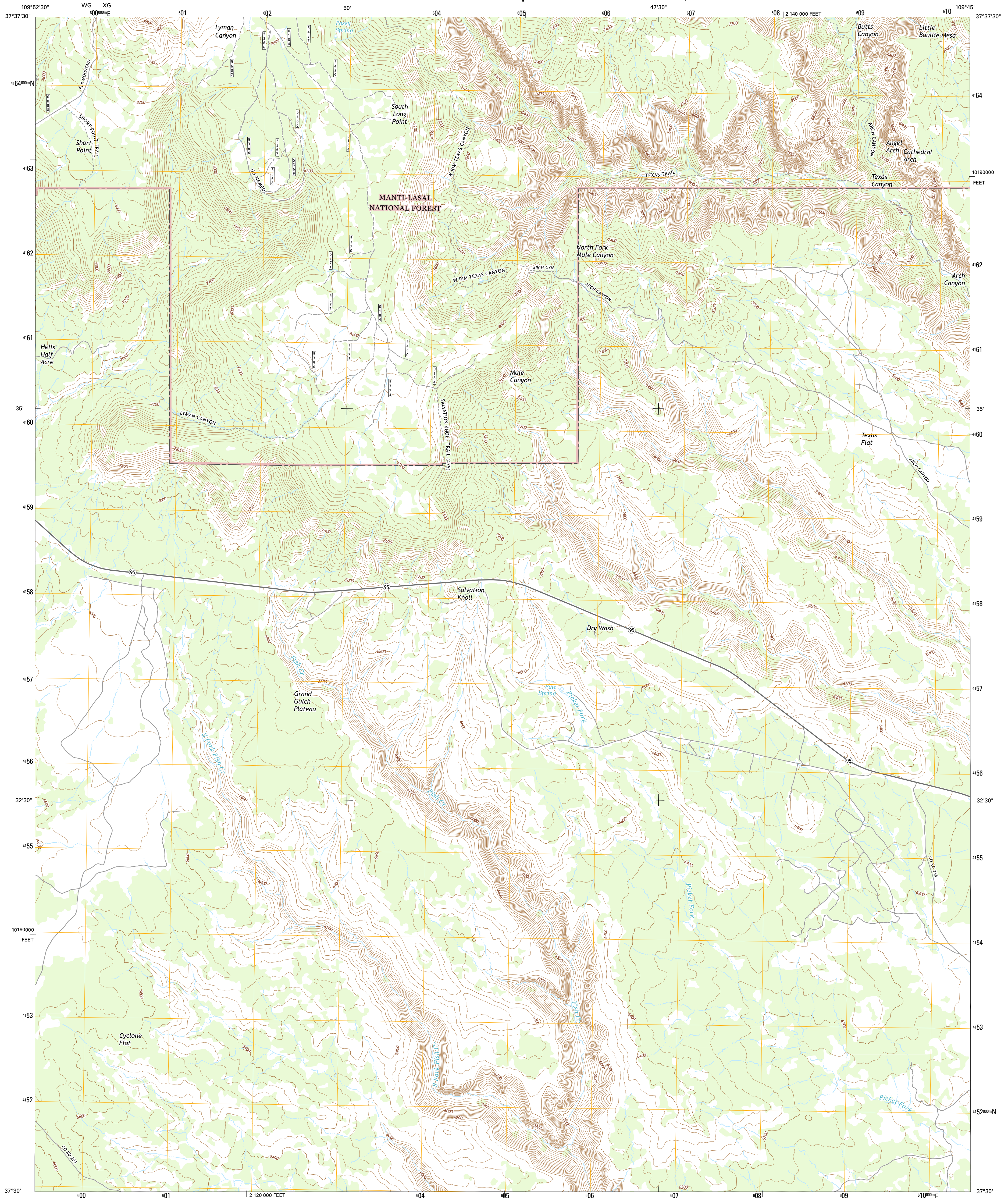




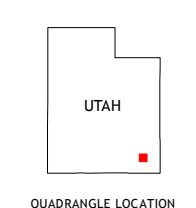
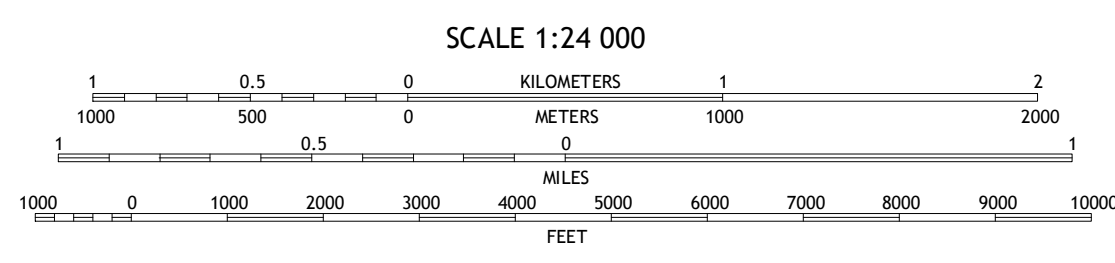
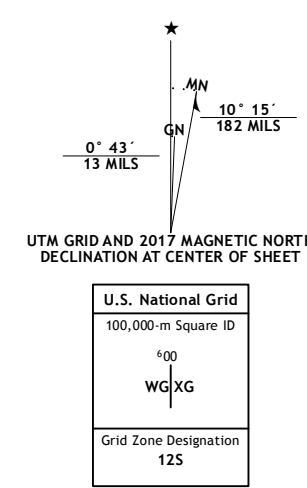
U.S. DEPARTMENT OF THE INTERIOR
U.S. GEOLOGICAL SURVEY



SOUTH LONG POINT QUADRANGLE
UTAH-SAN JUAN CO.
7.5-MINUTE SERIES



Produced by the United States Geological Survey
 North American Datum of 1983 (NAD83)
 World Geodetic System of 1984 (WGS84). Projection and
 1 000-meter grid: Universal Transverse Mercator, Zone 12S
 10 000-foot ticks: Utah Coordinate System of 1983 (south zone)
 This map is not a legal document. Boundaries may be
 generalized for this map scale. Private lands within government
 reservations may not be shown. Obtain permission before
 entering private lands.
 Imagery: NIP, October 2014
 Roads: U.S. Census Bureau, 2015 - 2016
 Roads within US Forest Service Lands: FSTopo Data
 with limited Forest Service updates, 2012 - 2016
 Names: GNIS, 2016
 Hydrography: National Hydrography Dataset, 2014
 Contours: National Elevation Dataset, 1999
 Boundaries: Multiple sources; see metadata file 1972 - 2016
 Public Land Survey System: BLM, 2016
 Wetlands: FWS National Wetlands Inventory 1977 - 2014



ROAD CLASSIFICATION

Expressway	Local Connector
Secondary Hwy	Local Road
Ramp	4WD
Interstate Route	US Route
FS Primary Route	FS Passenger Route
	FS High Clearance Route
	State Route

ADJOINING QUADRANGLES

1	2	3
4	5	6
7	8	

1 Woodshoe Buttes
 2 Kigalia Point
 3 Cream Pits
 4 Kane Gulch
 5 Hotel Rock
 6 Cedar Mesa North
 7 Snow Flat Spring Cave
 8 Bluff NW

SOUTH LONG POINT, UT
2017

