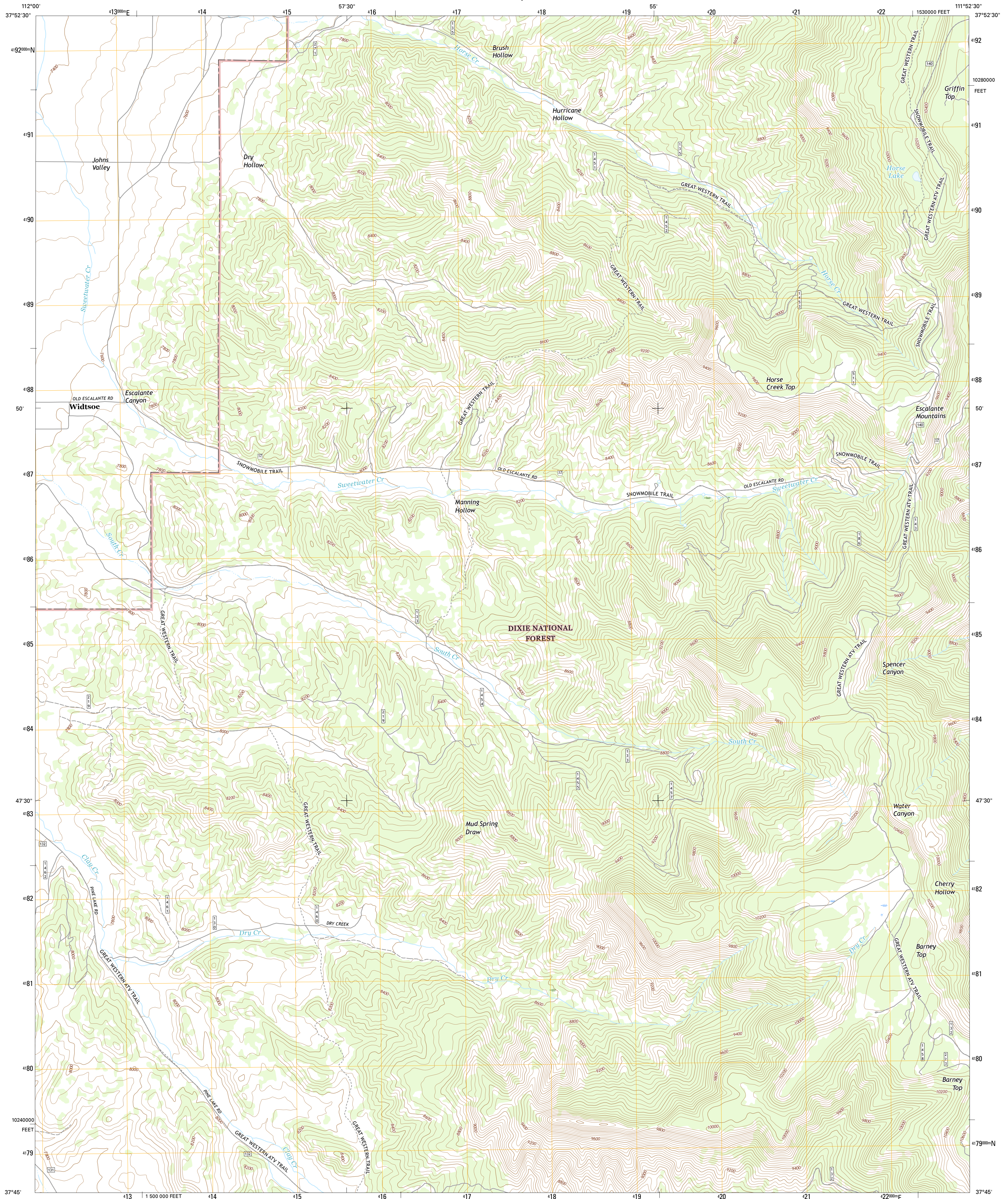




U.S. DEPARTMENT OF THE INTERIOR
U.S. GEOLOGICAL SURVEY



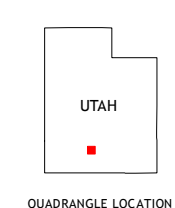
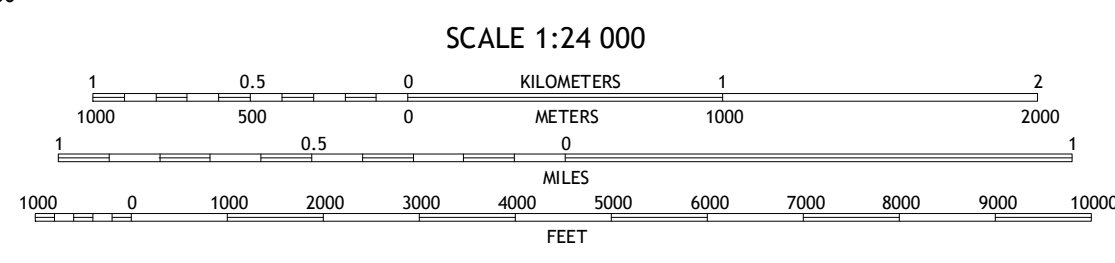
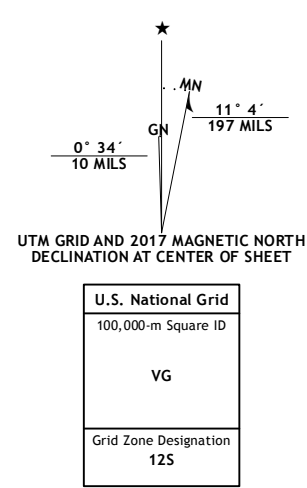
SWEETWATER CREEK QUADRANGLE
UTAH-GARFIELD CO.
7.5-MINUTE SERIES



Produced by the United States Geological Survey
North American Datum of 1983 (NAD83)
World Geodetic System of 1984 (WGS84) Projection and
1 000-meter grid; Universal Transverse Mercator, Zone 12S
10 000-foot ticks; Utah Coordinate System of 1983 (south zone)

This map is not a legal document. Boundaries may be
generalized for this map scale. Private lands within government
reservations may not be shown. Obtain permission before
entering private lands.

ImageryNAIP, October 2014
RoadsU.S. Census Bureau, 2015 - 2016
Roads within US Forest Service LandsFSTopo Data with limited Forest Service updates, 2012 - 2016
NamesGNIS, 2016
HydrographyNational Hydrography Dataset, 2014
ContoursNational Elevation Dataset, 1999
BoundariesMultiple sources; see metadata file 1972 - 2016
Public Land Survey SystemBLM, 2016
WetlandsFWS National Wetlands Inventory 1977 - 2014



ROAD CLASSIFICATION

Expressway	Local Connector
Secondary Hwy	Local Road
Ramp	4WD
Interstate Route	US Route
FS Primary Route	FS Passenger Route
	FS High Clearance Route
	State Route
	FS High Clearance Route

Check with local Forest Service unit for current travel conditions and restrictions.

1	2	3
4	5	6
7	8	

ADJOINING QUADRANGLES

- 1 Cow Creek
- 2 Grass Lakes
- 3 Barber Reservoir
- 4 Flake Mountain East
- 5 Griffin Point
- 6 Tropic Canyon
- 7 Pine Lake
- 8 Upper Valley

SWEETWATER CREEK, UT
2017

