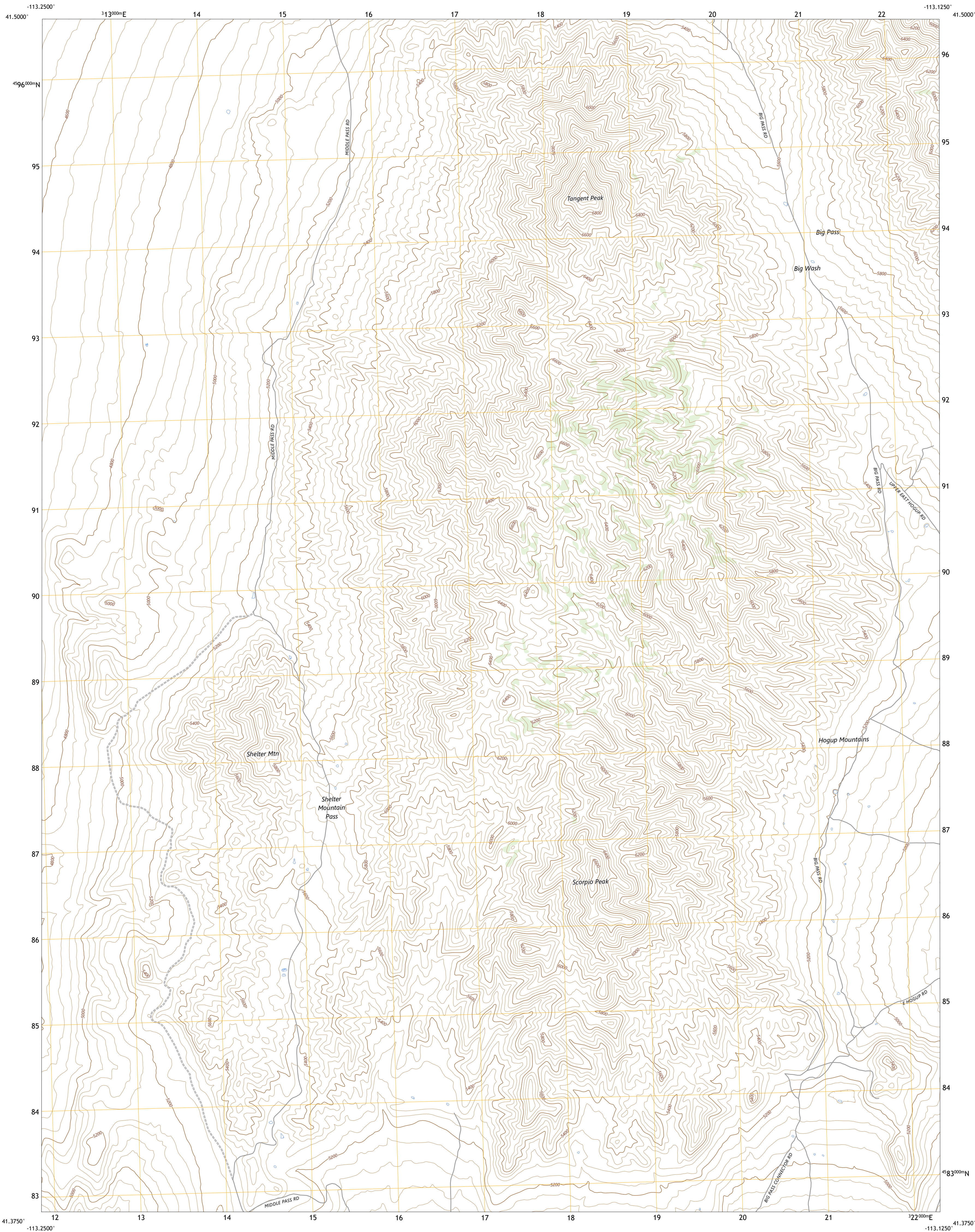




U.S. DEPARTMENT OF THE INTERIOR  
U.S. GEOLOGICAL SURVEY



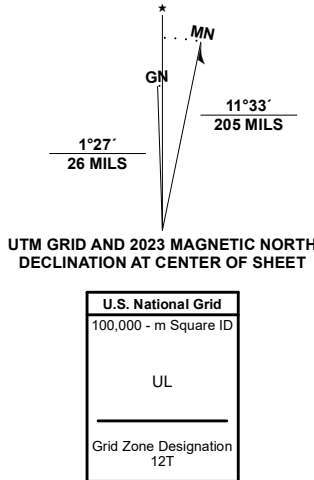
TANGENT PEAK QUADRANGLE  
UTAH - BOX ELDER COUNTY  
7.5-MINUTE SERIES



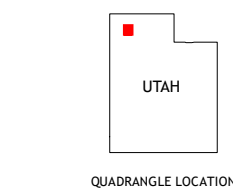
Produced by the United States Geological Survey

North American Datum of 1983 (NAD83)  
World Geodetic System of 1984 (WGS84), Projection and  
1 000-meter grid/Universal Transverse Mercator, Zone 12T  
This map is not a legal document. Boundaries may be  
generalized for this map scale. Private lands within government  
reservations may not be shown. Obtain permission before  
entering private lands.

Imagery.....NAIP, August 2018 - August 2018  
Roads.....U.S. Census Bureau, 2016  
Names.....GNIS, 1979 - 2022  
Hydrography.....National Hydrography Dataset, 2003 - 2020  
Contours.....National Elevation Dataset, 2002  
Boundaries.....Multiple sources: see metadata file, 2021 - 2022  
Public Land Survey System.....BLM, 2019  
Wetlands.....FWS National Wetlands Inventory, 1983



CONTOUR INTERVAL 40 FEET  
NORTH AMERICAN VERTICAL DATUM OF 1988  
This map was produced to conform with the  
National Geospatial Program US Topo Product Standard.



1	2	3
4	5	6
7	8	9

- 1 Matlin
- 2 Hogup Bar
- 3 Crocodile Mountain SE
- 4 Sheep Mountain
- 5 Dolphin Island West
- 6 Groome
- 7 Meadow Spring
- 8 Hogup Ridge North

ROAD CLASSIFICATION		
Expressway	Local Connector	
Secondary Hwy	Local Road	
Ramp	4WD	
Interstate Route	US Route	State Route

TANGENT PEAK, UT  
2023

