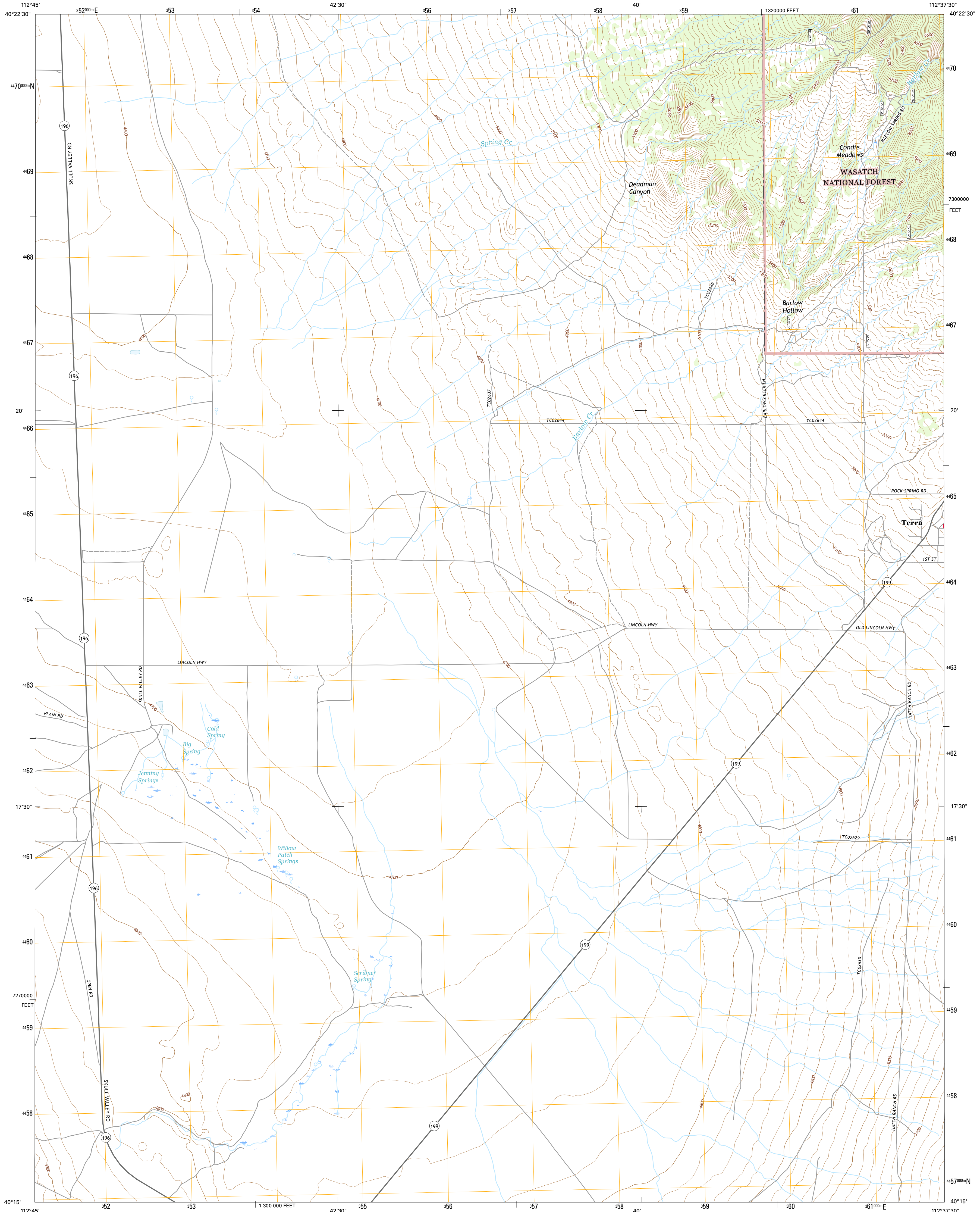




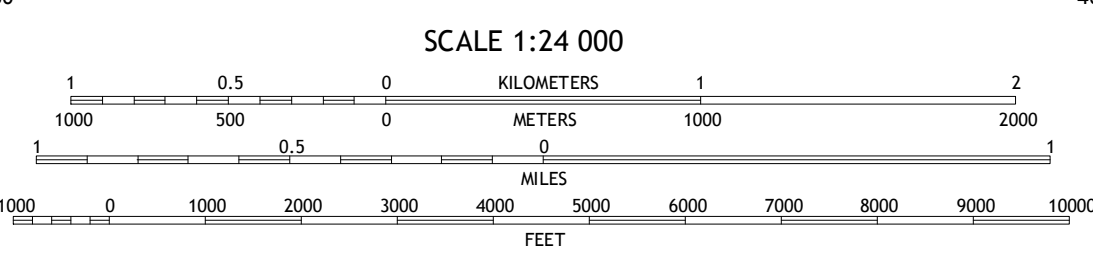
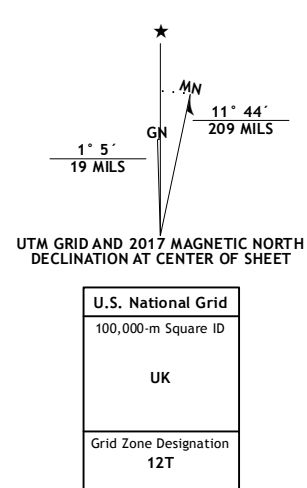
U.S. DEPARTMENT OF THE INTERIOR
U.S. GEOLOGICAL SURVEY



TERRA QUADRANGLE
UTAH-TOOLE CO.
7.5-MINUTE SERIES



Produced by the United States Geological Survey
 North American Datum of 1983 (NAD83)
 Roads: U.S. Census Bureau, 2015 - 2016
 World Geodetic System of 1984 (WGS84), Projection and
 1 000-meter grid: Universal Transverse Mercator, Zone 12T
 10 000-foot ticks: Utah Coordinate System of 1983 (central
 zone)
 This map is not a legal document. Boundaries may be
 generalized for this map scale. Private lands within government
 reservations may not be shown. Obtain permission before
 entering private lands.
 Imagery: NAIIP, October 2014
 Roads: U.S. Census Bureau, 2015 - 2016
 Roads within US Forest Service Lands: FSTopo Data
 with limited Forest Service updates, 2012 - 2016
 Names: GNIS, 2016
 Hydrography: National Hydrography Dataset, 2014
 Contours: National Elevation Dataset, 2002
 Boundaries: Multiple sources; see metadata file 1972 - 2016
 Public Land Survey System: BLM, 2016
 Wetlands: FW5 National Wetlands Inventory 1977 - 2014



CONTOUR INTERVAL 20 FEET
 NORTH AMERICAN VERTICAL DATUM OF 1988
 This map was produced to conform with the
 National Geospatial Program US Topo Product Standard, 2011.
 A metadata file associated with this product is draft version 0.6.19

QUADRANGLE LOCATION

1	2	3
4	5	6
7	8	

ADJOINING QUADRANGLES

- Hickman Knolls
- Deseret Peak West
- Deseret Peak East
- Talboys Peak SE
- Johnson Pass
- Camels Back Ridge NE
- Davis Knolls
- Onaqui Mountains South

ROAD CLASSIFICATION

Expressway	Local Connector
Secondary Hwy	Local Road
Ramp	4WD
Interstate Route	US Route
FS Primary Route	FS Passenger Route
	FS High Clearance Route
	State Route

Check with local Forest Service unit
for current travel conditions and restrictions.

TERRA, UT
2017

