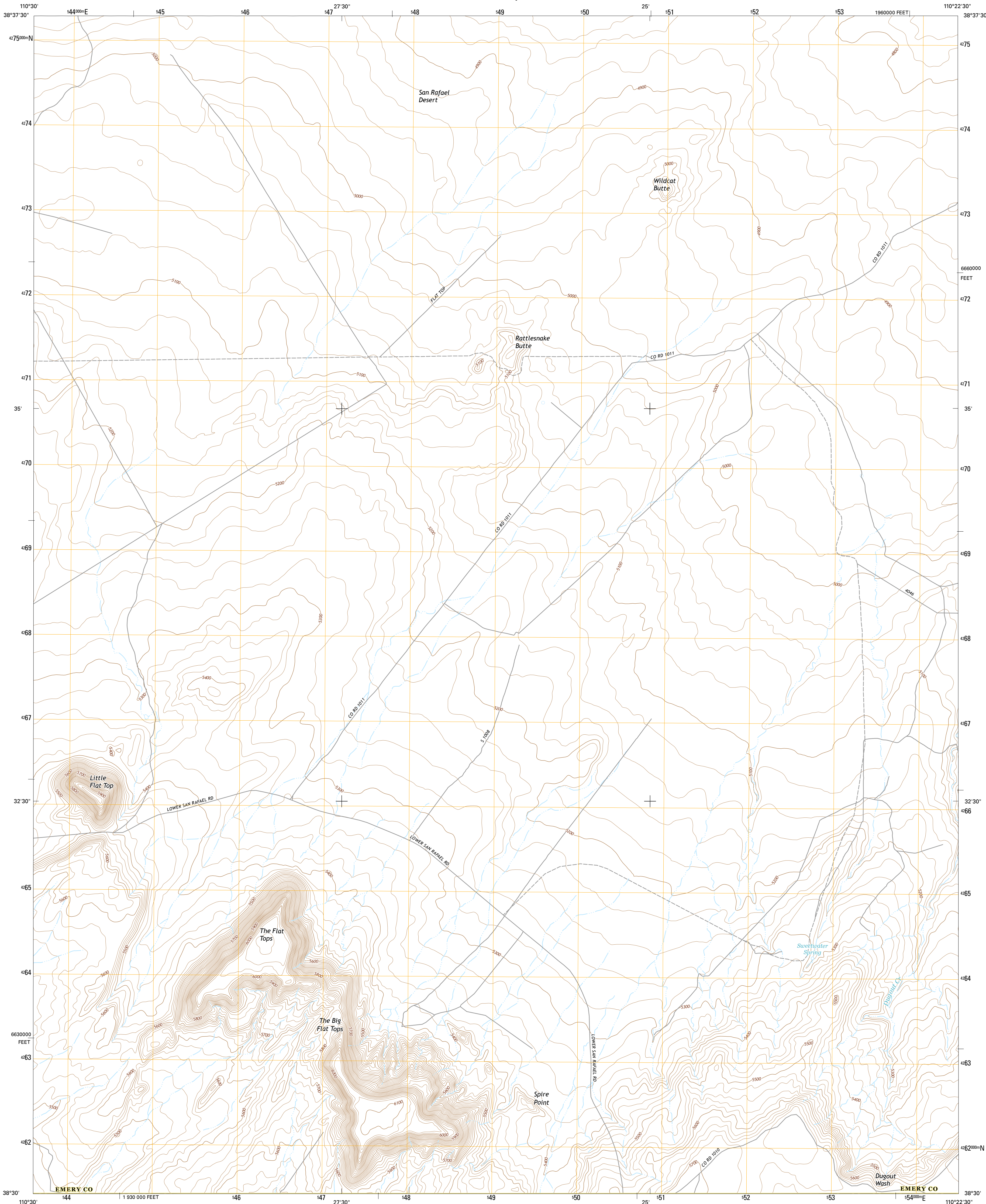




U.S. DEPARTMENT OF THE INTERIOR  
U.S. GEOLOGICAL SURVEY



THE FLAT TOPS QUADRANGLE  
UTAH-EMERY CO.  
7.5-MINUTE SERIES



Produced by the United States Geological Survey  
North American Datum of 1983 (NAD83)  
World Geodetic System of 1984 (WGS84). Projection and  
1 000-meter grid: Universal Transverse Mercator, Zone 12S  
10 000-foot ticks: Utah Coordinate System of 1983 (central  
zone)

This map is not a legal document. Boundaries may be  
generalized for this map scale. Private lands within government  
reservations may not be shown. Obtain permission before  
entering private lands.

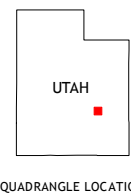
Imagery.....NAIP, October 2014  
Roads.....U.S. Census Bureau, 2015 - 2016  
Names.....GNIS, 2016  
Hydrography.....National Hydrography Dataset, 2014  
Contours.....National Elevation Dataset, 1999  
Boundaries.....Multiple sources; see metadata file 1972 - 2016  
Public Land Survey System.....BLM, 2016  
Wetlands.....FWS National Wetlands Inventory 1977 - 2014

UTM GRID AND 2017 MAGNETIC NORTH  
DECLINATION AT CENTER OF SHEET

U.S. National Grid  
100,000-m Square ID  
WH  
Grid Zone Designation  
12S

SCALE 1:24 000  
1 000 500 0 500 1000 KILOMETERS  
1 000 500 0 500 1000 METERS  
1 000 0 1000 2000 3000 4000 5000 6000 7000 8000 9000 10000 MILES  
1 000 0 1000 2000 3000 4000 5000 6000 7000 8000 9000 10000 FEET  
CONTOUR INTERVAL 20 FEET  
NORTH AMERICAN VERTICAL DATUM OF 1988

This map was produced to conform with the  
National Geospatial Program US Topo Product Standard, 2011.  
A metadata file associated with this product is draft version 0.6.19



ROAD CLASSIFICATION  
Expressway  
Secondary Hwy  
Ramp  
Interstate Route  
Local Connector  
Local Road  
4WD  
US Route  
State Route

1 Old Woman Wash  
2 Crows Nest Spring  
3 Spring Canyon  
4 Gilson Butte  
5 Jacks Knob  
6 Point of Rocks West  
7 Point of Rocks East  
8 Whitbeck Knoll

THE FLAT TOPS, UT  
2017

