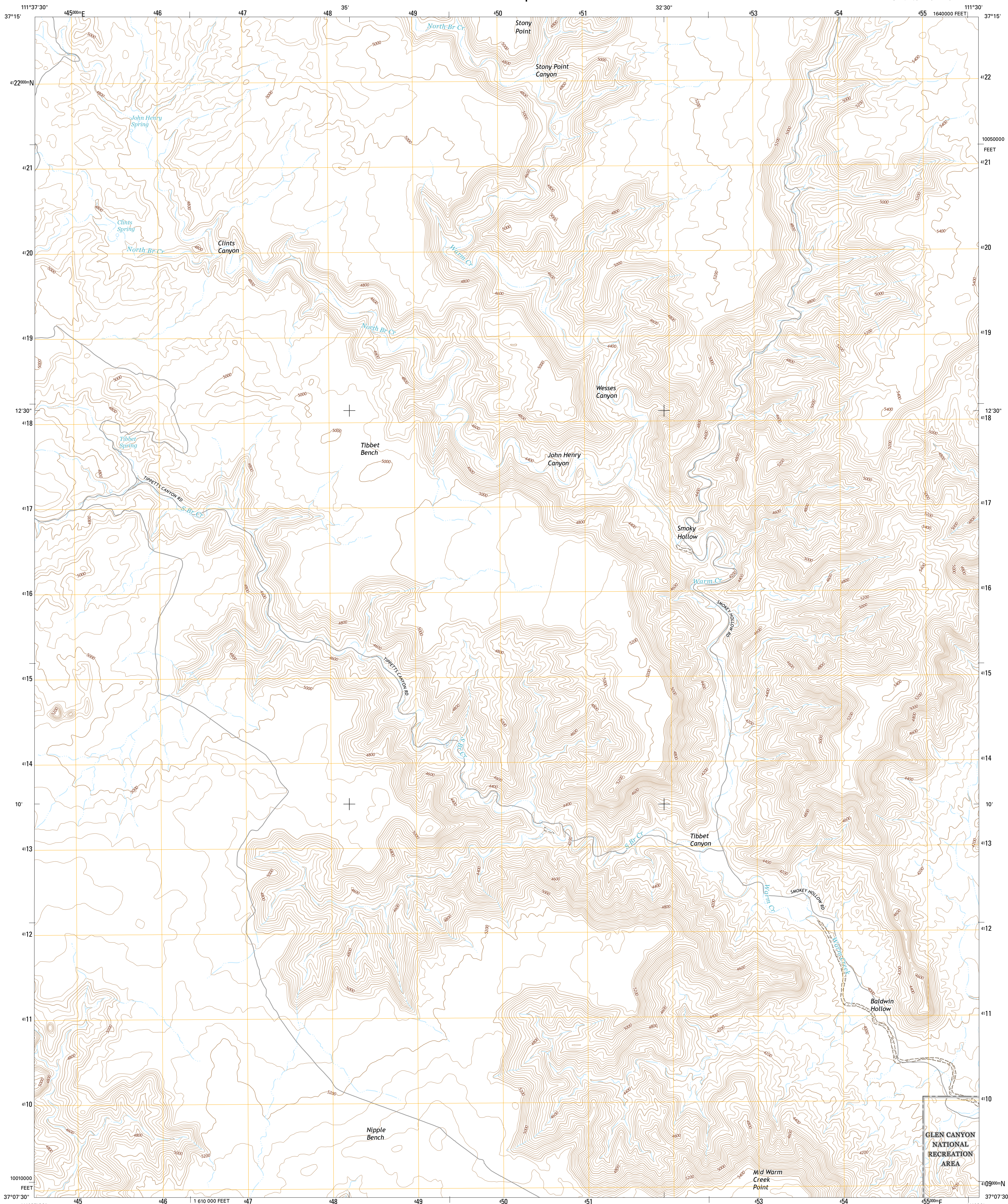




U.S. DEPARTMENT OF THE INTERIOR  
U.S. GEOLOGICAL SURVEY



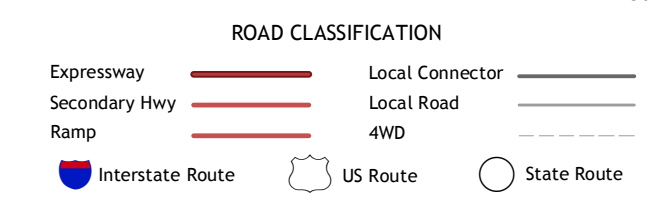
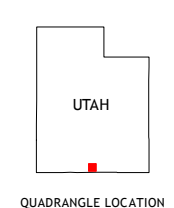
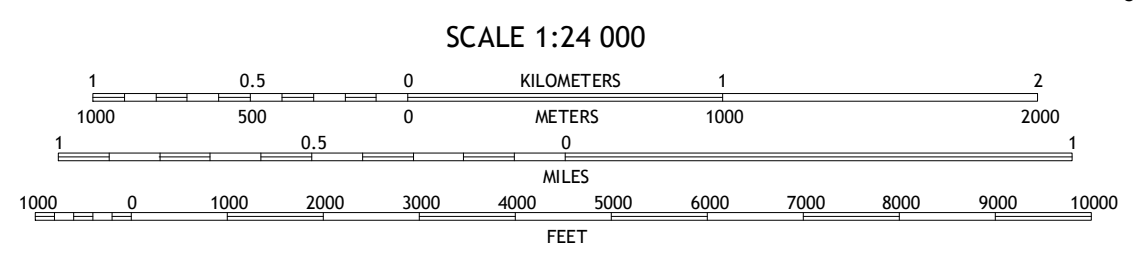
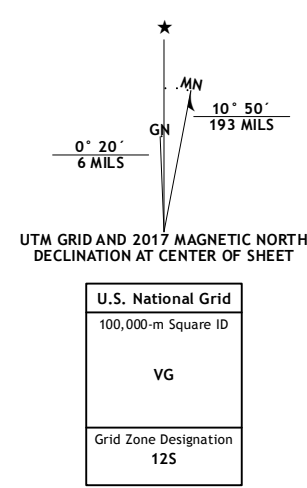
TIBBET BENCH QUADRANGLE  
UTAH-KANE CO.  
7.5-MINUTE SERIES



Produced by the United States Geological Survey  
North American Datum of 1983 (NAD83)  
World Geodetic System of 1984 (WGS84): Projection and 1 000-meter grid; Universal Transverse Mercator, Zone 12S  
10 000-foot ticks: Utah Coordinate System of 1983 (south zone)

This map is not a legal document. Boundaries may be generalized for this map scale. Private lands within government reservations may not be shown. Obtain permission before entering private lands.

Imagery.....NAIP, October 2014  
Roads.....U.S. Census Bureau, 2015 - 2016  
Names.....GNIS, 2016  
Hydrography.....National Hydrography Dataset, 2014  
Contours.....National Elevation Dataset, 1999  
Boundaries.....Multiple sources; see metadata file 1972 - 2016  
Public Land Survey System.....BLM, 2016  
Wetlands.....FWS National Wetlands Inventory 1977 - 2014



1	2	3
4	5	6
7	8	

ADJOINING QUADRANGLES

- Fourmile Bench
- Ship Mountain Point
- Needle Eye Point
- Nipple Butte
- Smoky Hollow
- Big Water
- Lone Rock
- Warm Creek Bay

TIBBET BENCH, UT  
2017

