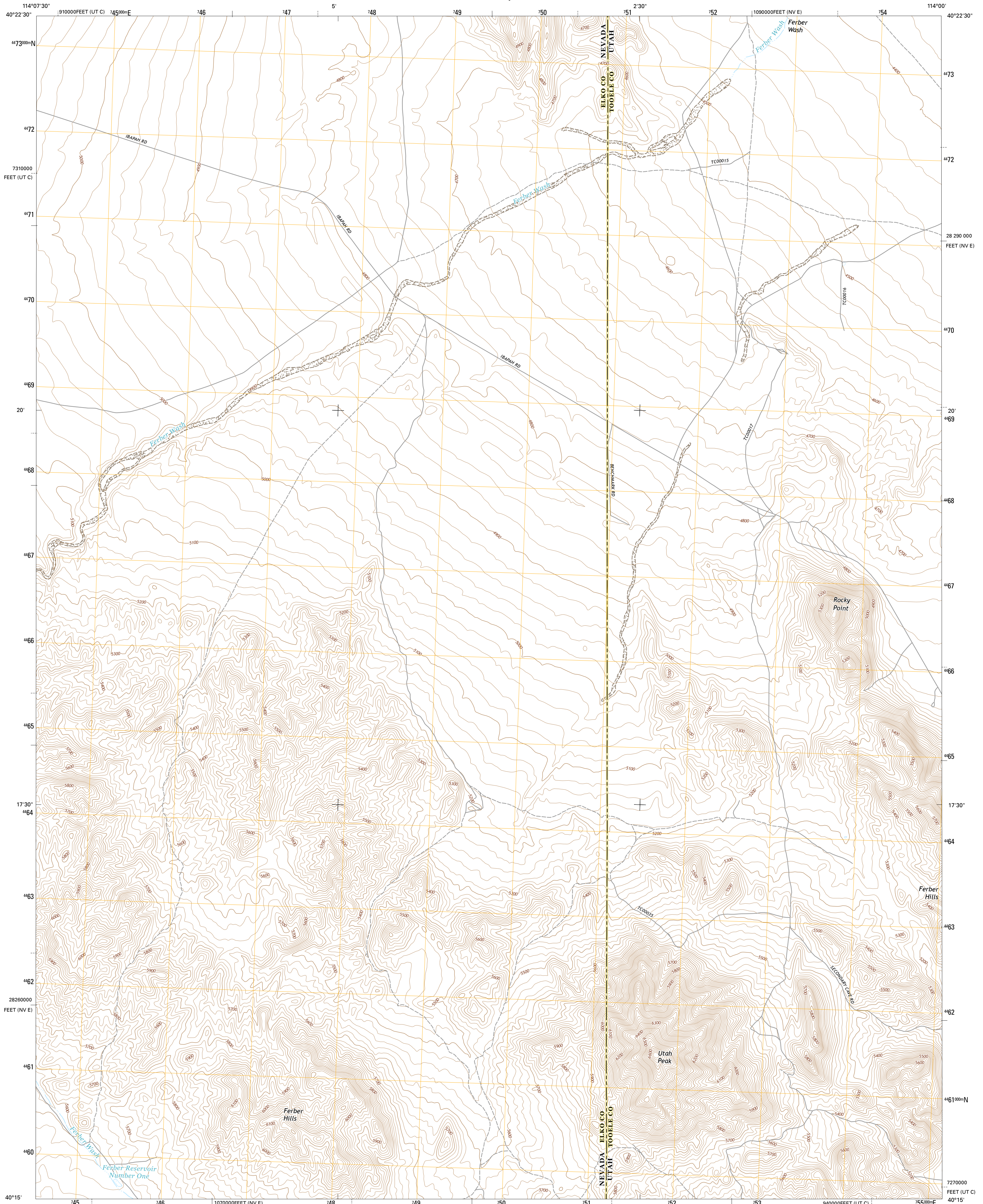




U.S. DEPARTMENT OF THE INTERIOR
U.S. GEOLOGICAL SURVEY



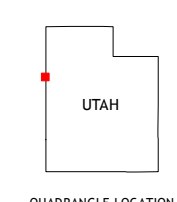
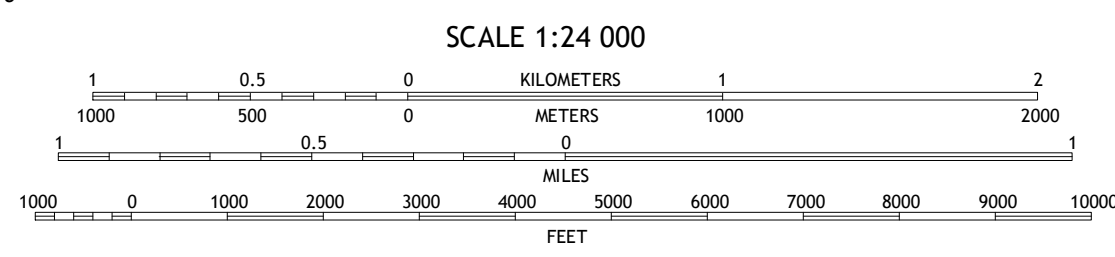
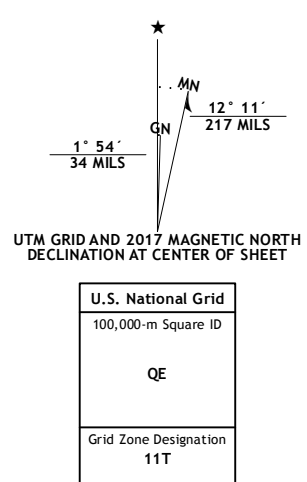
UTAH PEAK QUADRANGLE
UTAH-NEVADA
7.5-MINUTE SERIES



Produced by the United States Geological Survey
 North American Datum of 1983 (NAD83)
 World Geodetic System of 1984 (WGS84) - Projection and
 1000-meter grid: Universal Transverse Mercator, Zone 11T
 10 000-foot ticks: Nevada Coordinate System of 1983 (east zone), Utah Coordinate System of 1983 (central zone)

This map is not a legal document. Boundaries may be generalized for this map scale. Private lands within government reservations may not be shown. Obtain permission before entering private lands.

Imagery.....NAIP, September 2015
 Roads.....U.S. Census Bureau, 2015 - 2016
 Names.....GNIS, 2016
 Hydrography.....National Hydrography Dataset, 2015
 Contours.....National Elevation Dataset, 2002
 Boundaries.....Multiple sources; see metadata file 1972 - 2016
 Public Land Survey System.....BLM, 2011 - 2015
 Wetlands.....FWS National Wetlands Inventory 1977 - 2014



ROAD CLASSIFICATION

Expressway	Local Connector
Secondary Hwy	Local Road
Ramp	4WD
Interstate Route	US Route
	State Route

1	2	3
4	5	6
7	8	

ADJOINING QUADRANGLES

1 Ferguson Mountain
 2 Ferguson Flat
 3 Elephant Knoll NW
 4 White Horse Pass
 5 Elephant Knoll
 6 Ferber Peak NW
 7 Ferber Peak
 8 Ochre Mountain

UTAH PEAK, UT-NV
2017

