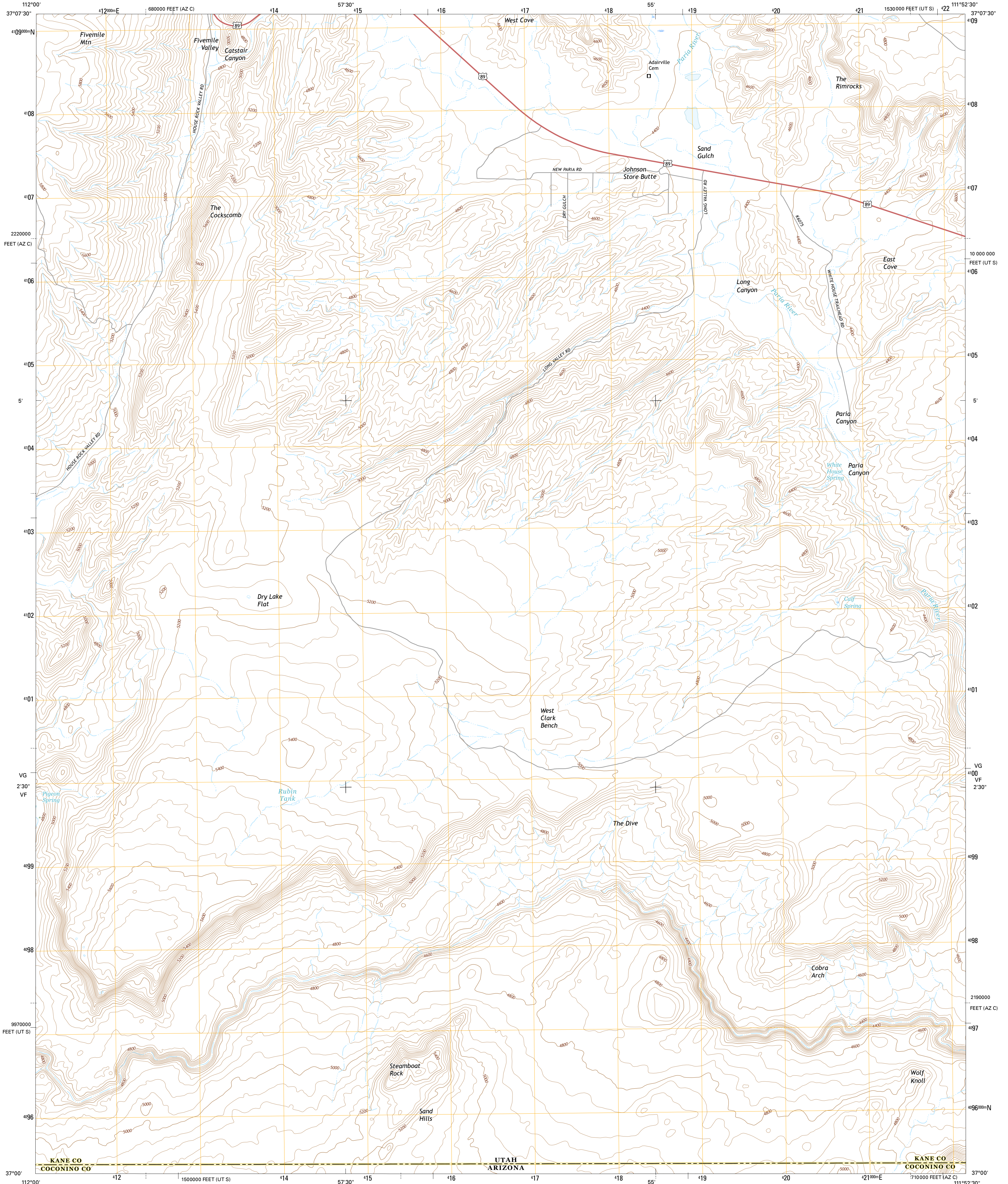




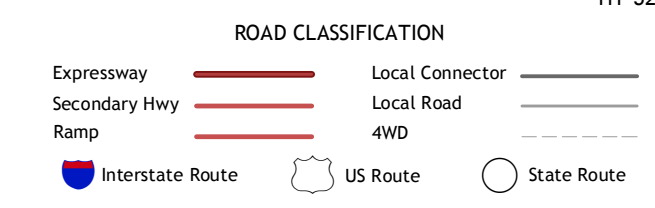
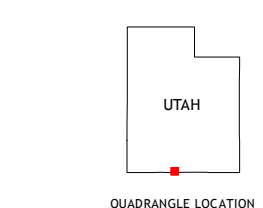
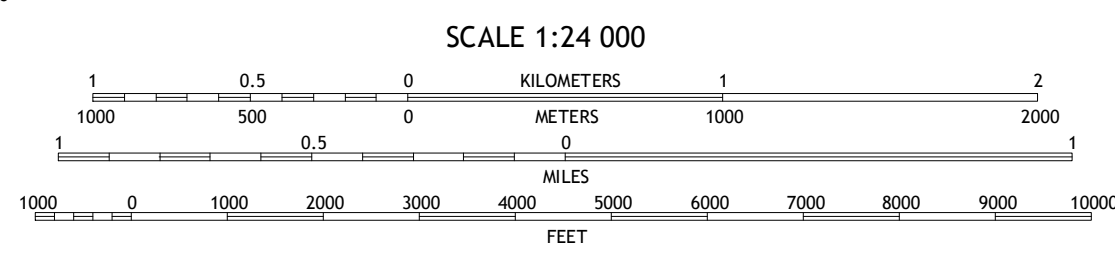
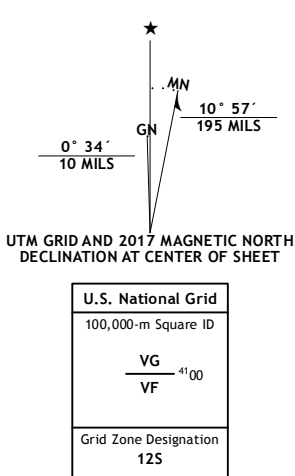
U.S. DEPARTMENT OF THE INTERIOR
U.S. GEOLOGICAL SURVEY



WEST CLARK BENCH QUADRANGLE
UTAH-AZONA
7.5-MINUTE SERIES



Produced by the United States Geological Survey
 North American Datum of 1983 (NAD83)
 World Geodetic System of 1984 (WGS84). Projection and
 1 000-foot ticks; Utah Coordinate System of 1983 (south zone),
 Arizona Coordinate System of 1983 (central zone)
 Imagery: NAIP, August 2015
 Roads: U.S. Census Bureau, 2015
 Names: GNIS, 2016
 Hydrography: National Hydrography Dataset, 2016
 Contours: National Elevation Dataset, 1999
 Boundaries: Multiple sources; see metadata file 1972 - 2016
 Public Land Survey System: BLM, 2011 - 2016
 Wetlands: FWS National Wetlands Inventory 1977 - 2014



| | | |
|---|---|---|
| 1 | 2 | 3 |
| 4 | 5 | 6 |
| 7 | 8 | |

ADJOINING QUADRANGLES

1 Eightmile Pass
 2 Fivemile Valley
 3 Lower Coyote Spring
 4 Pine Hollow Canyon
 5 Bridger Point
 6 Coyote Buttes
 7 Poverty Flat
 8 Wrather Arch

WEST CLARK BENCH, UT-AZ
2017

