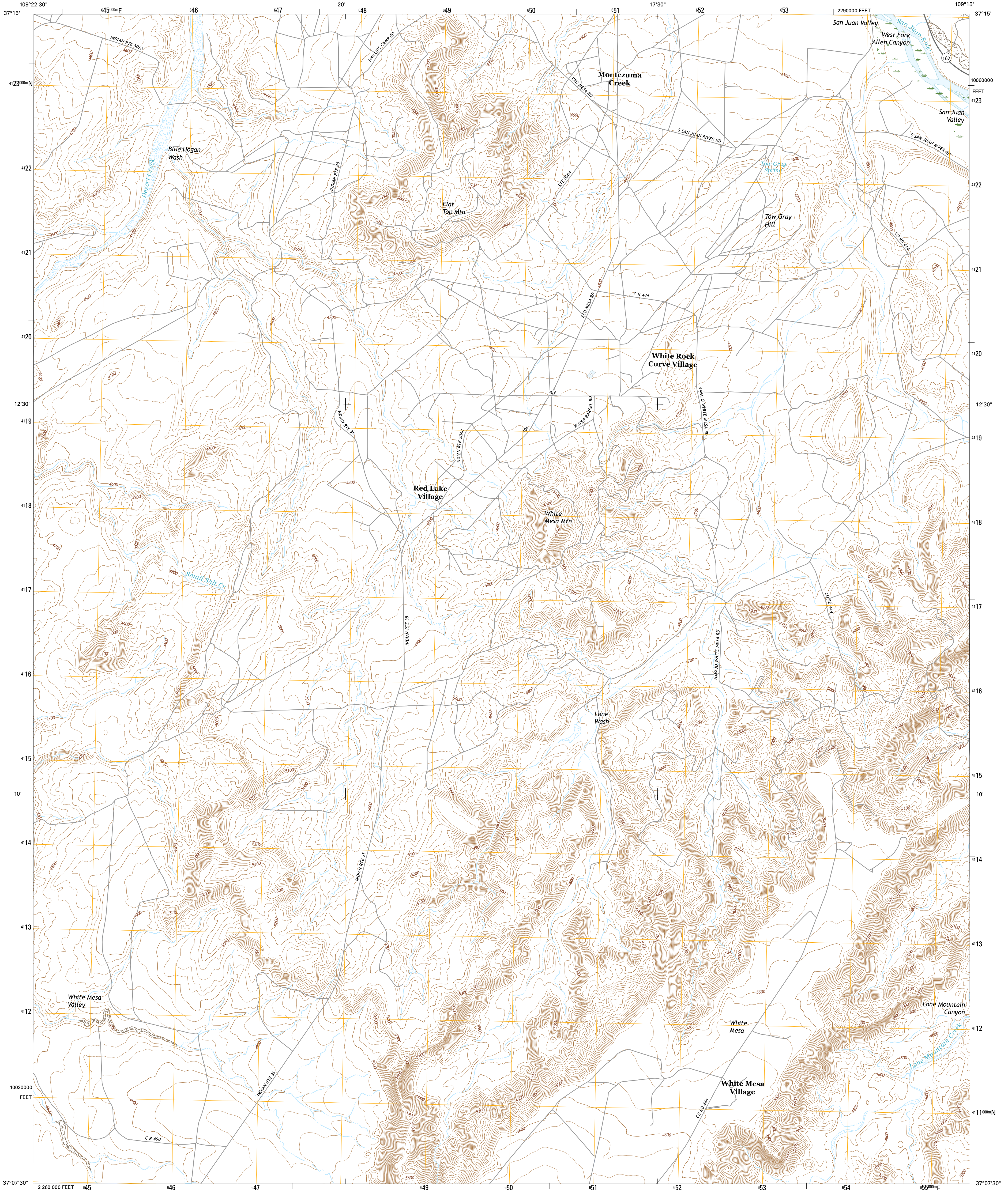




U.S. DEPARTMENT OF THE INTERIOR  
U.S. GEOLOGICAL SURVEY



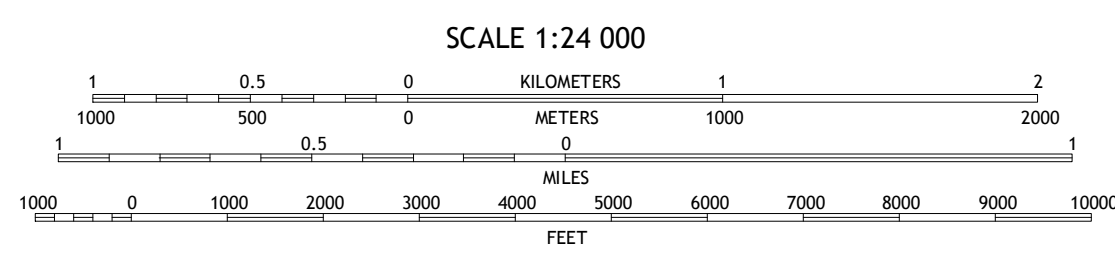
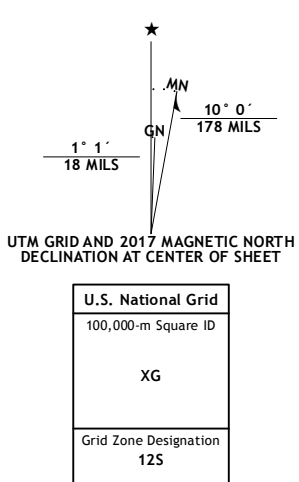
WHITE MESA VILLAGE QUADRANGLE  
UTAH-SAN JUAN CO.  
7.5-MINUTE SERIES



Produced by the United States Geological Survey  
North American Datum of 1983 (NAD83)  
World Geodetic System of 1984 (WGS84), Projection and  
1 000-meter grid; Universal Transverse Mercator, Zone 12S  
10 000-foot ticks; Utah Coordinate System of 1983 (south zone)

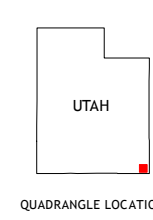
This map is not a legal document. Boundaries may be  
generalized for this map scale. Private lands within government  
reservations may not be shown. Obtain permission before  
entering private lands.

Imagery.....NAIP, October 2014  
Roads.....U.S. Census Bureau, 2015  
Names.....GNIS, 2016  
Hydrography.....National Hydrography Dataset, 2014  
Contours.....National Elevation Dataset, 2000  
Boundaries.....Multiple sources; see metadata file 1972-2016  
Public Land Survey System.....BLM, 2016  
Wetlands.....FWS National Wetlands Inventory 1977-2014

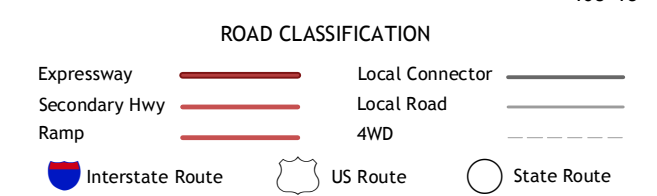


CONTOUR INTERVAL 20 FEET  
NORTH AMERICAN VERTICAL DATUM OF 1988

This map was produced to conform with the  
National Geospatial Program US Topo Product Standard, 2011.  
A metadata file associated with this product is draft version 0.6.19



QUADRANGLE LOCATION



1	2	3
4	5	6
7	8	

ADJOINING QUADRANGLES

- 1 Recapture Pocket
- 2 Montezuma Creek
- 3 Navajo Canyon
- 4 Hogan Mesa
- 5 Aneth
- 6 Gray Spot Rock
- 7 White Mesa Village SE
- 8 Yellow Rock Point West

WHITE MESA VILLAGE, UT  
2017



NSN REF NO. U.S. G.S. 2.4-4-67-0