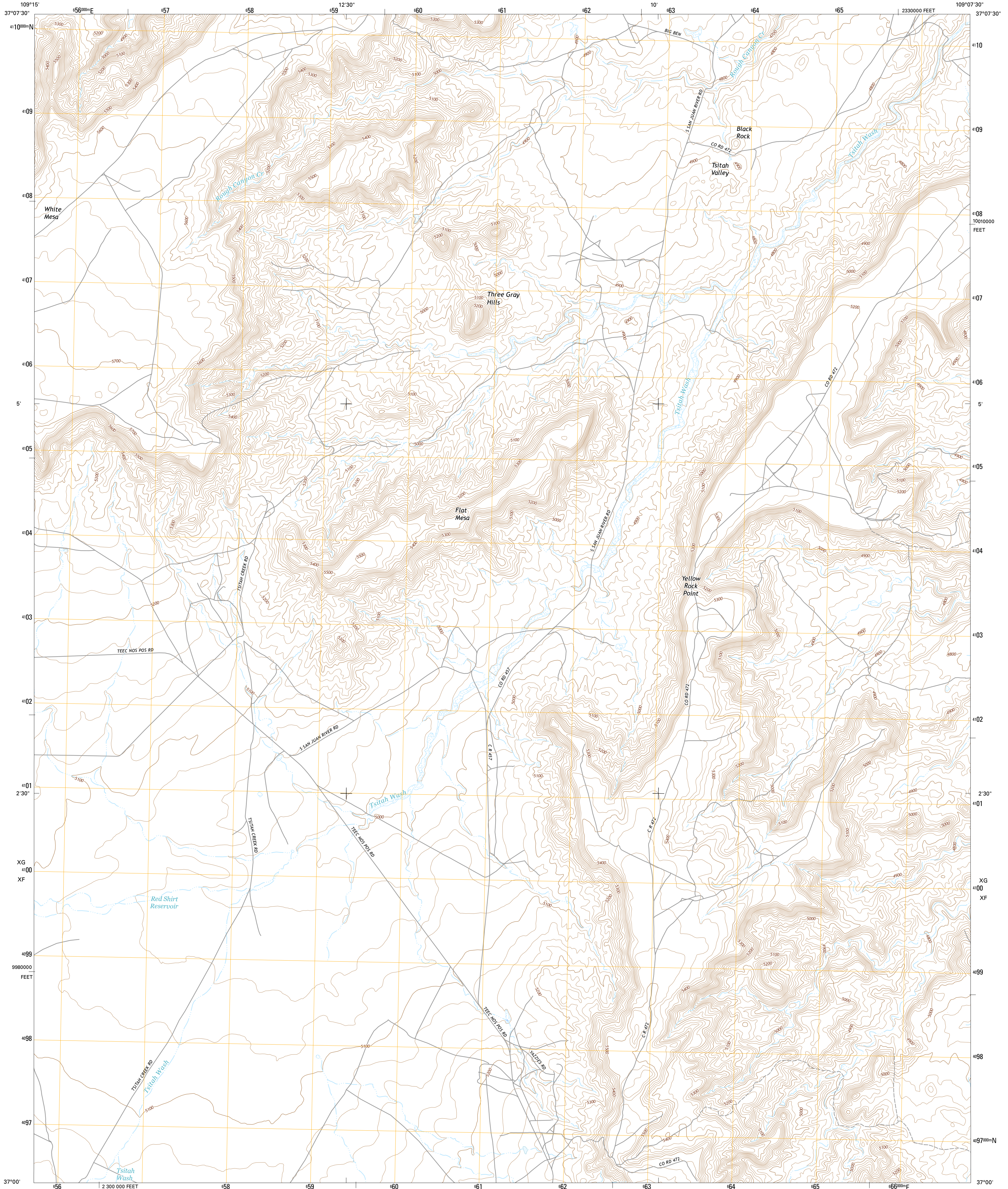




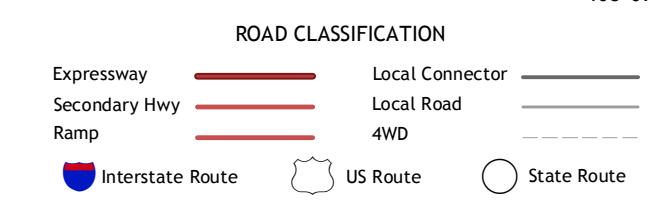
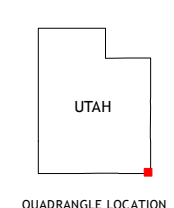
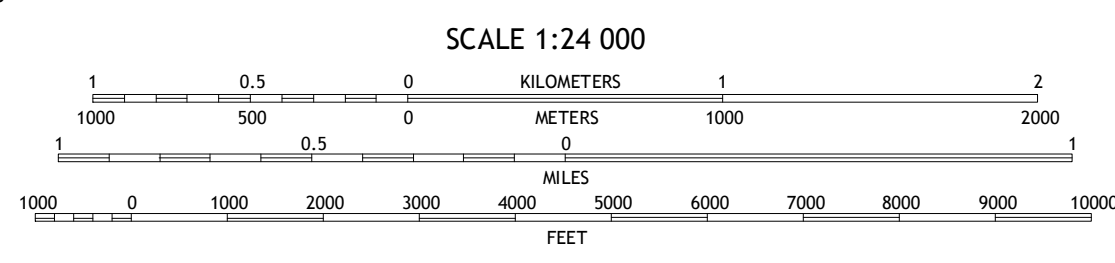
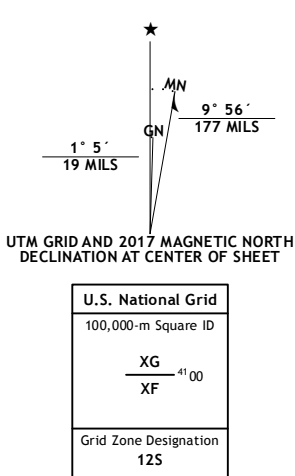
U.S. DEPARTMENT OF THE INTERIOR  
U.S. GEOLOGICAL SURVEY



YELLOW ROCK POINT WEST QUADRANGLE  
UTAH-SAN JUAN CO.  
7.5-MINUTE SERIES



**Produced by the United States Geological Survey**  
 North American Datum of 1983 (NAD83)  
 World Geodetic System of 1984 (WGS84). Projection and  
 1 000-meter grid: Universal Transverse Mercator, Zone 12S  
 10 000-foot ticks: Utah Coordinate System of 1983 (south zone)  
 This map is not a legal document. Boundaries may be  
 generalized for this map scale. Private lands within government  
 reservations may not be shown. Obtain permission before  
 entering private lands.  
 Imagery.....NAIP, October 2014  
 Roads.....U.S. Census Bureau, 2015  
 Names.....GNIS, 2016  
 Hydrography.....National Hydrography Dataset, 2014  
 Contours.....National Elevation Dataset, 2000  
 Boundaries.....Multiple sources; see metadata file 1972\_2016  
 Public Land Survey System.....BLM, 2016  
 Wetlands.....FWS National Wetlands Inventory 1977 - 2014



1	2	3	1 White Mesa Village
4	5	6	2 Aneth
6	7	8	3 Peters Mipple
			4 White Mesa Village SE
			5 Yellow Rock Point East
			6 Toh Athn Mesa East
			7 Cow Butte
			8 Teec Nos Pos

ADJOINING QUADRANGLES

CONTOUR INTERVAL 20 FEET  
 NORTH AMERICAN VERTICAL DATUM OF 1988  
 This map was produced to conform with the  
 National Geospatial Program US Topo Product Standard, 2011.  
 A metadata file associated with this product is draft version 0.6.19

YELLOW ROCK POINT WEST, UT  
2017

