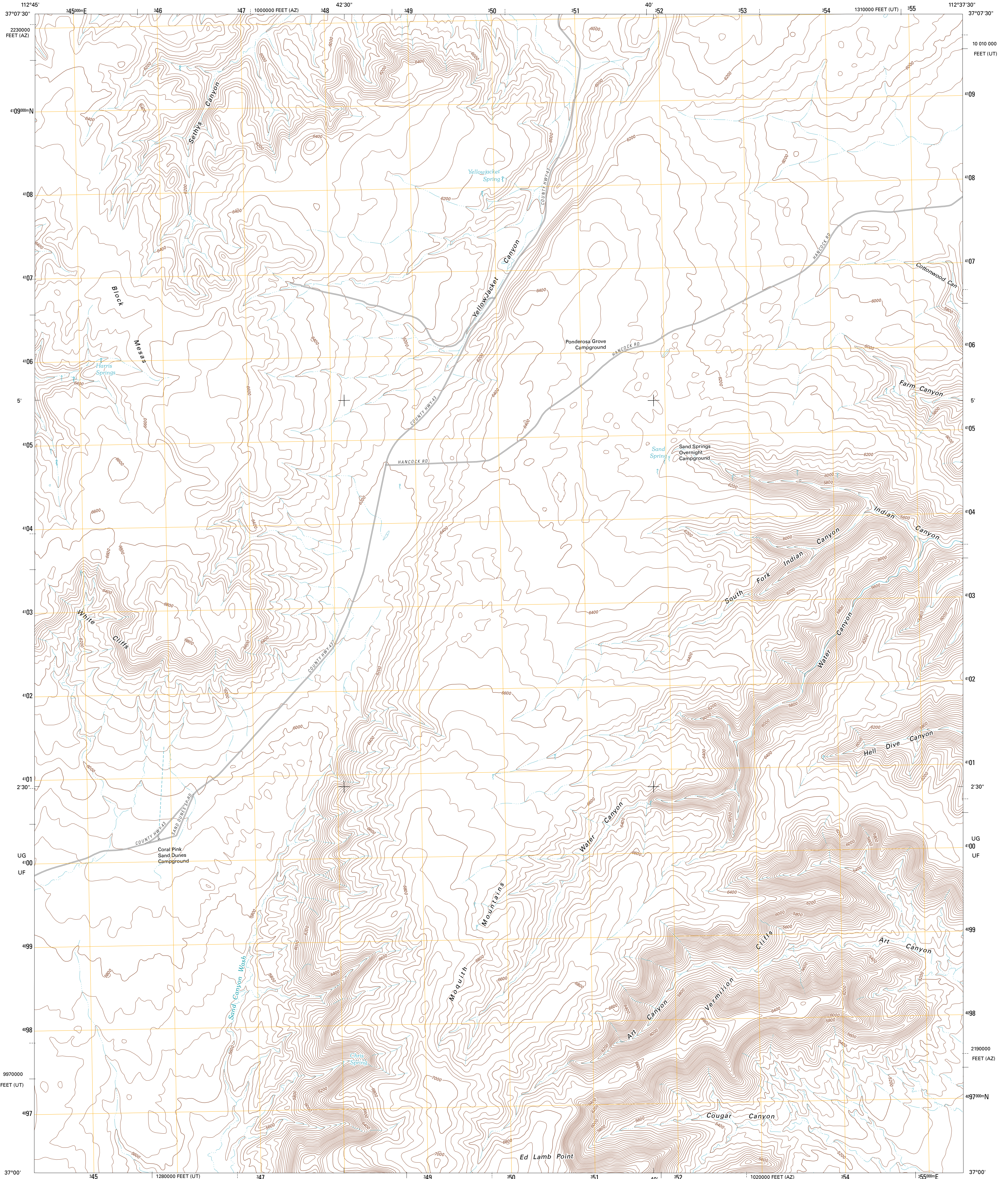




U.S. DEPARTMENT OF THE INTERIOR
U. S. GEOLOGICAL SURVEY

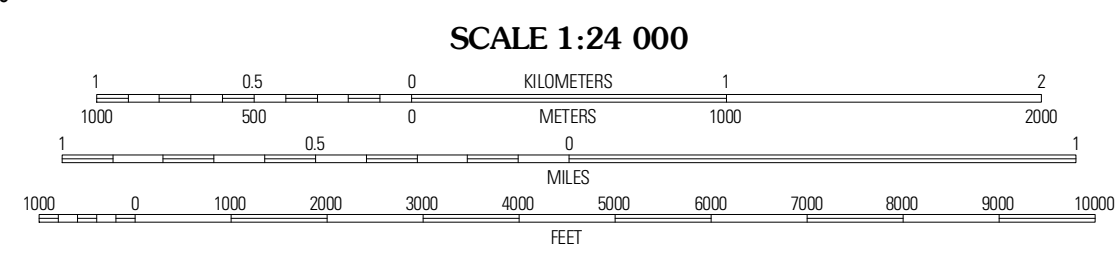
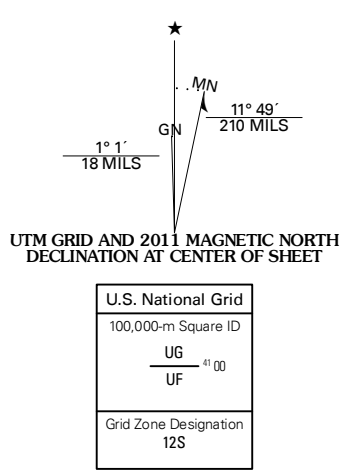


YELLOWJACKET CANYON QUADRANGLE
UTAH-AZIZONA
7.5-MINUTE SERIES



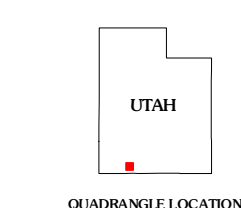
Produced by the United States Geological Survey
North American Datum of 1983 (NAD83)
World Geodetic System of 1984 (WGS84). Projection and
1 000-meter grid: Universal Transverse Mercator, Zone 12S
10 000-foot ticks: Utah Coordinate System of 1983 (west zone),
Arizona Coordinate System of 1983 (west zone)

Imagery: NADIP, August 2009
Roads: ©2006-2010 Tele Atlas
Names: GNIS, 2010
Hydrography: National Hydrography Dataset, 2009
Contours: National Elevation Dataset, 2000

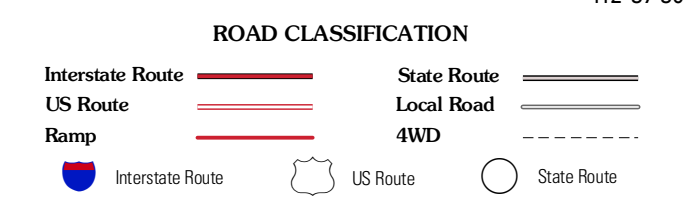


CONTOUR INTERVAL 40 FEET
NORTH AMERICAN VERTICAL DATUM OF 1988

This map was produced to conform with version 0.5.10 of the
draft USGS Standards for 7.5-Minute Quadrangle Maps.
A metadata file associated with this product is draft version 0.5.11



The Barracks	Mount Carmel	White Tower
Elephant Butte	Yellow Jacket Canyon	Kanab
Moccasin	Kathab	Fredonia



YELLOWJACKET CANYON, UT-AZ
2011

ADJOINING 7.5 QUADRANGLES