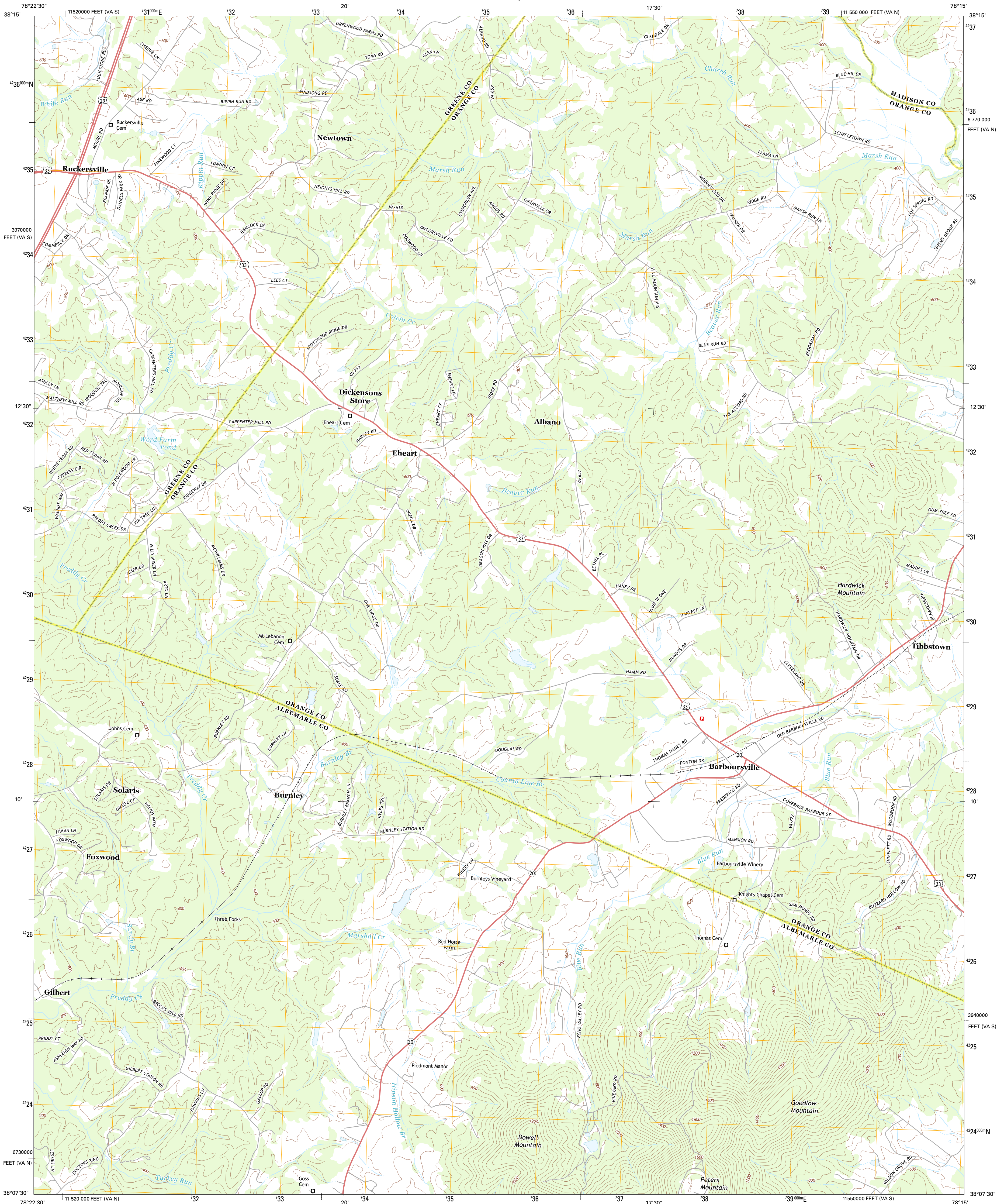




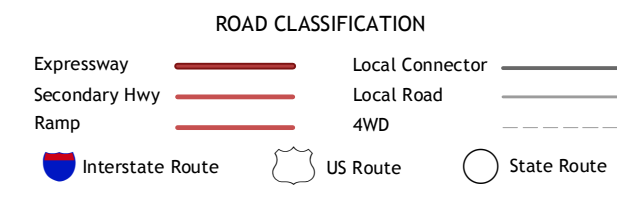
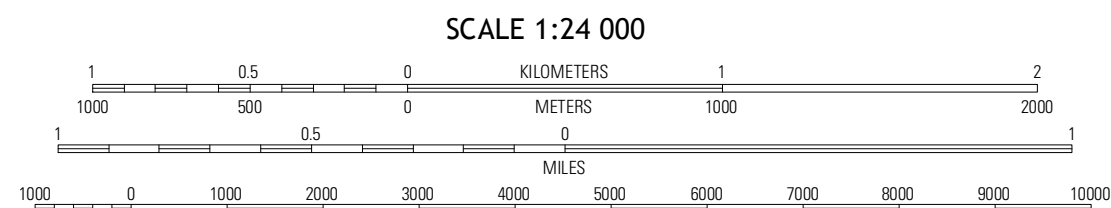
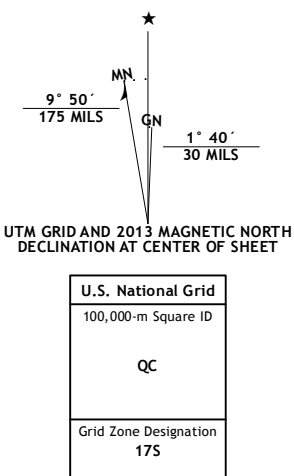
U.S. DEPARTMENT OF THE INTERIOR
U. S. GEOLOGICAL SURVEY



BARBOURSVILLE QUADRANGLE
VIRGINIA
7.5-MINUTE SERIES



Produced by the United States Geological Survey
North American Datum of 1983 (NAD83)
World Geodetic System of 1984 (WGS84)
1:000-meter grid: Universal Transverse Mercator, Zone 17S
10:000-foot ticks: Virginia Coordinate System of 1983 (north and south zones)



ADJOINING 7.5 QUADRANGLES		
Stanardsville	Rochelle	Madison Mills
Earlysville	Barboursville	Condonsville
Charlottesville East	Kewick	Bowells Tavern

BARBOURSVILLE, VA
2013