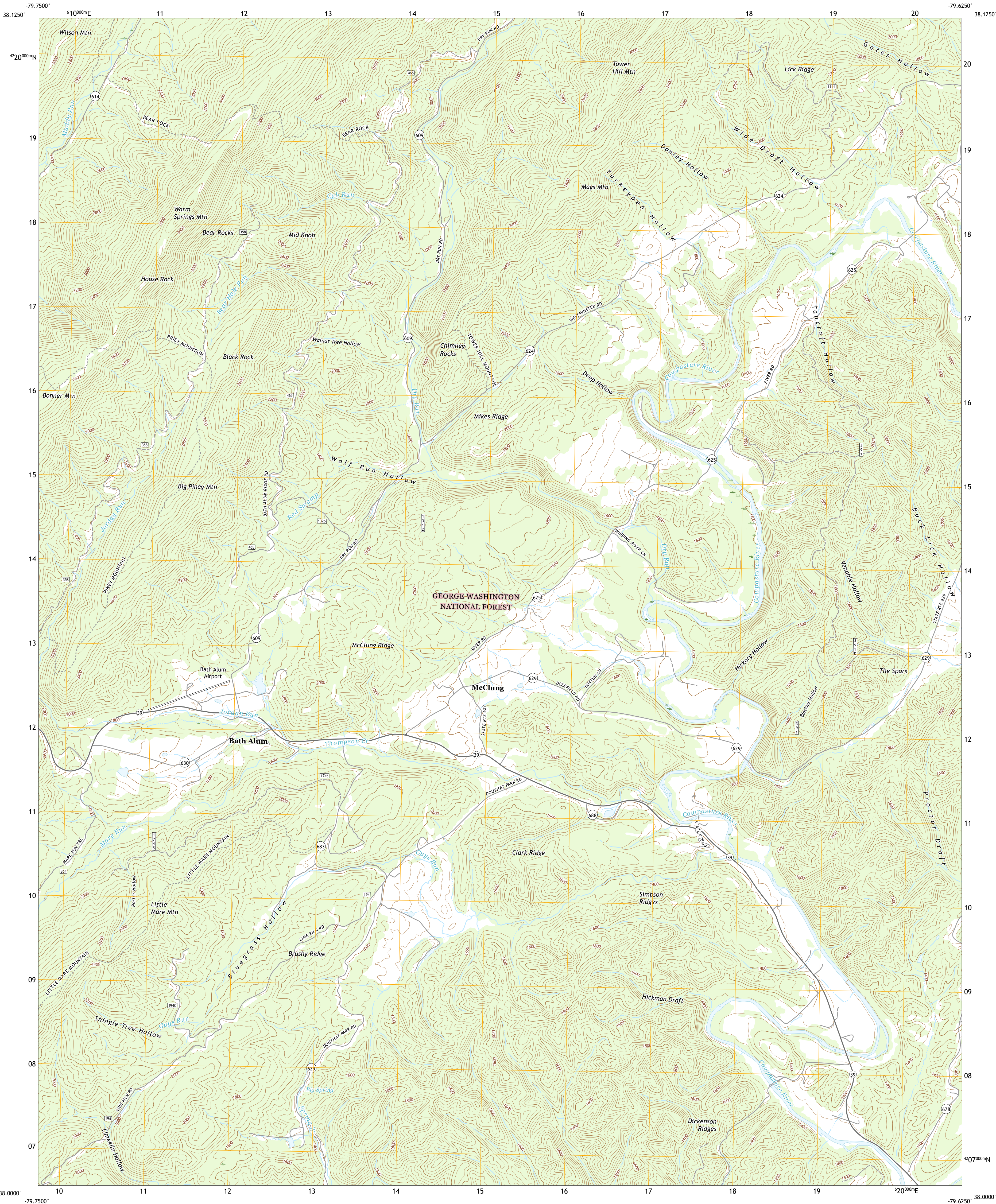




U.S. DEPARTMENT OF THE INTERIOR  
U.S. GEOLOGICAL SURVEY

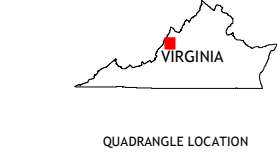
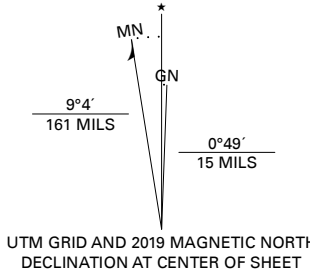


BATH ALUM QUADRANGLE  
VIRGINIA - BATH COUNTY  
7.5-MINUTE SERIES



**Produced by the United States Geological Survey**  
North American Datum of 1983 (NAD83)  
World Geodetic System of 1984 (WGS84). Projection and  
1 000-meter grid: Universal Transverse Mercator, Zone 17S  
This map is not a legal document. Boundaries may be  
generalized for this map scale. Private lands within government  
reservations may not be shown. Obtain permission before  
entering private lands.

Imagery.....N.A.P., April 2016 - July 2016  
Roads.....U.S. Census Bureau, 2016  
Data.....FSTopo  
Roads within US Forest Service Lands.....FSTopo  
Names.....with limited Forest Service updates, 2013  
Contours.....GNS, 1979 - 2016  
Hydrography.....National Hydrography Dataset, 2001 - 2018  
Boundaries.....National Elevation Dataset, 2002  
Boundaries.....Multiple sources; see metadata file 2017 - 2018  
Wetlands.....FWS National Wetlands Inventory 1982



1	2	3
4	5	6
7	8	9

1 Sunrise  
2 Burnsville  
3 Williamsville  
4 Warm Springs  
5 Green Valley  
6 Healing Springs  
7 Nimrod Hall  
8 Millboro

**ROAD CLASSIFICATION**

Expressway  
Secondary Hwy  
Ramp  
Interstate Route  
FS Primary Route

Local Connector  
Local Road  
4WD  
US Route  
FS Passenger Route  
FS High Clearance Route

State Route

Check with local Forest Service unit  
for current travel conditions and restrictions.

BATH ALUM, VA  
2019

