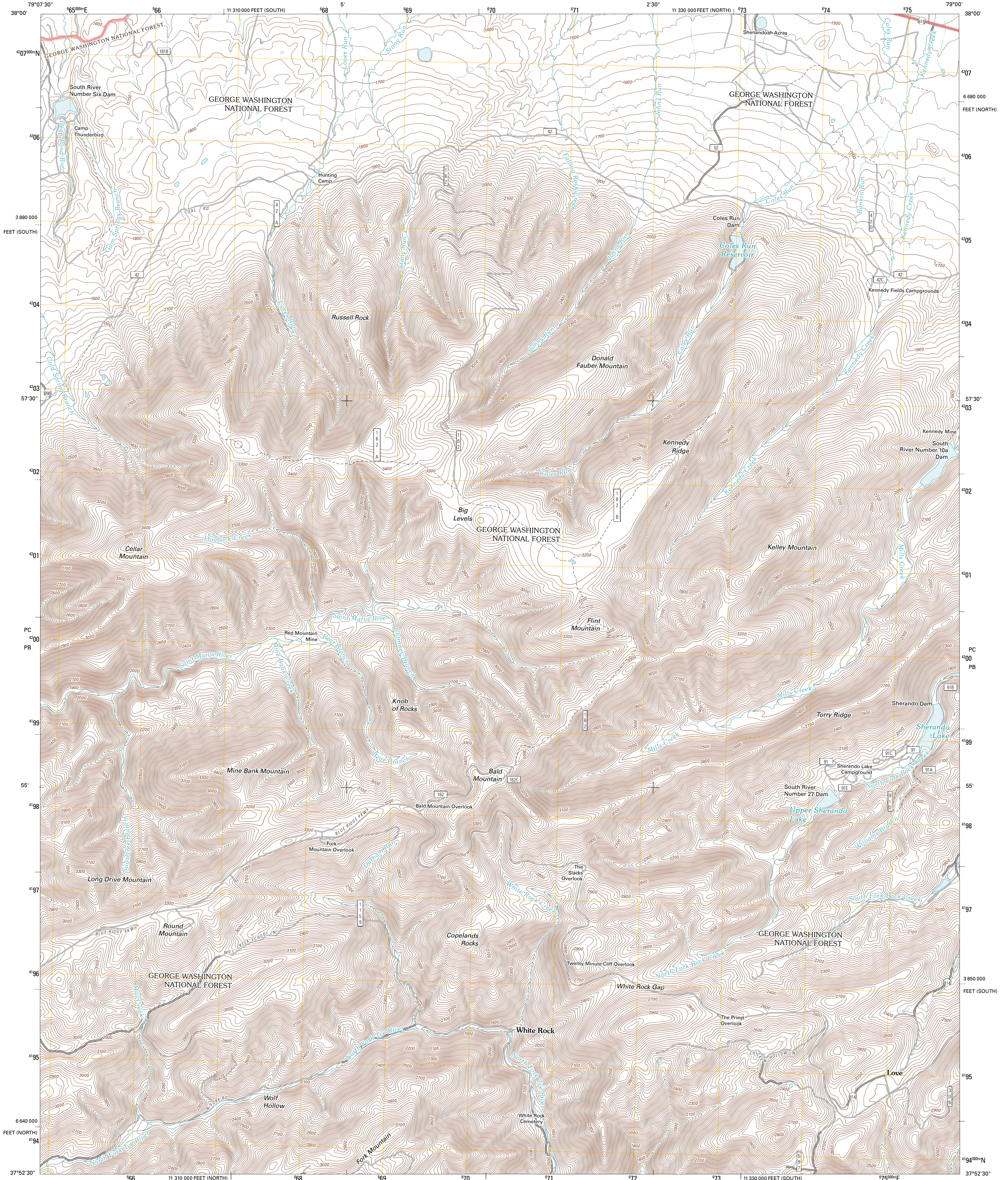




U.S. DEPARTMENT OF THE INTERIOR
U. S. GEOLOGICAL SURVEY

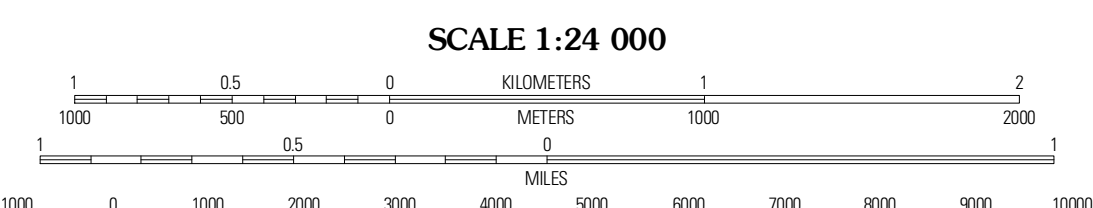
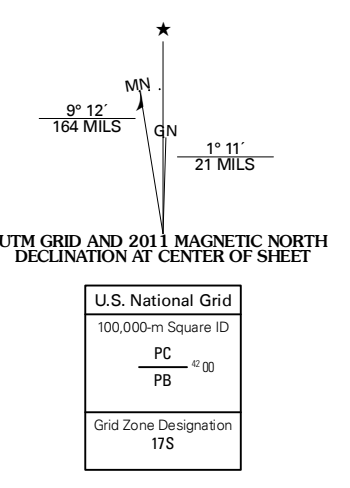


BIG LEVELS QUADRANGLE
VIRGINIA
7.5-MINUTE SERIES



Produced by the United States Geological Survey
North American Datum of 1983 (NAVD83)
World Geodetic System of 1984 (WGS84). Projection and
1 000-meter grid; Universal Transverse Mercator, Zone 17S
10 000-foot ticks; Virginia Coordinate System of 1983 (north
and south zones)

Imagery: N.A.P., June 2009 - September 2009
Roads: 020006-2010 Tele Atlas
Roads within US Forest Service Lands: FSTopo Data
with limited Forest Service updates, 2009
Names: G.N.S., 2010
Hydrography: National Hydrography Dataset, 2009
Contours: National Elevation Dataset, 1999



CONTOUR INTERVAL 40 FEET
NORTH AMERICAN VERTICAL DATUM OF 1988

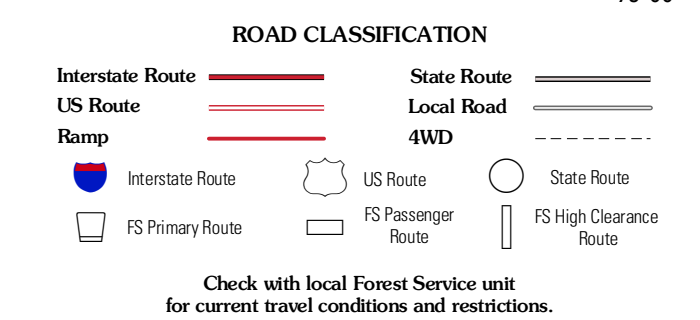
This map was produced to conform with version 0.5.10 of the
draft USGS Standards for 7.5-Minute Quadrangle Maps.
A metadata file associated with this product is draft version 0.5.12



QUADRANGLE LOCATION

Greenlee	Stuarts Draft	Waynesboro West
Veauxville	Big Levels	Sherando
Montebello	Massies Mill	Horseshoe Mountain

ADJOINING 7.5 QUADRANGLES



BIG LEVELS, VA
2011