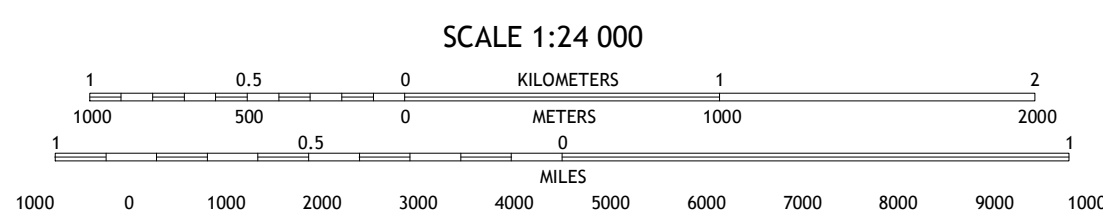
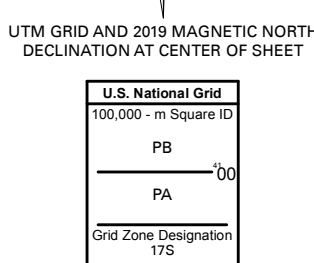
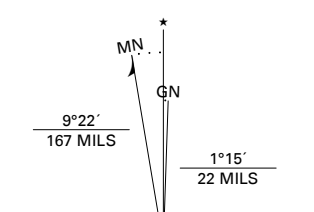


Produced by the United States Geological Survey

North American Datum of 1983 (NAD83)
World Geodetic System of 1984 (WGS84), Projection and
1 000 meter grid/Universal Transverse Mercator, Zone 17S
This map is not a legal document. Boundaries may be
generalized for this map scale. Private lands within government
reservations may not be shown. Obtain permission before
entering private lands.

Imagery.....N.A.I.P., June 2016 - September 2016
Roads.....U.S. Census Bureau, 2016
Names.....GNIS, 1979 - 2019
Hydrography.....National Hydrography Dataset, 2006
Contours.....National Elevation Dataset, 2008
Boundaries.....Multiple sources; see metadata file, 2017 - 2018
Wetlands.....FWS National Wetlands Inventory 1982 - 1984



CONTOUR INTERVAL 10 FEET
NORTH AMERICAN VERTICAL DATUM OF 1988

This map was produced to conform with the
National Geospatial Program US Topo Product Standard, 2011.
A metadata file associated with this product is draft version 0.6.18



QUADRANGLE LOCATION

1	2	3
4	5	6
7	8	

ADJOINING QUADRANGLES

- 1 Gladys
- 2 Mike
- 3 Red House
- 4 Long Island
- 5 Aspen
- 6 Republican Grove
- 7 Nathalie
- 8 Conner Lake

ROAD CLASSIFICATION	
	Expressway
	Secondary Hwy
	Ramp
	Interstate Route
	Local Connector
	Local Road
	4WD
	US Route
	State Route



NSN 7540-01-640-0564
NSA REF. NO. JUSGSX24K76438