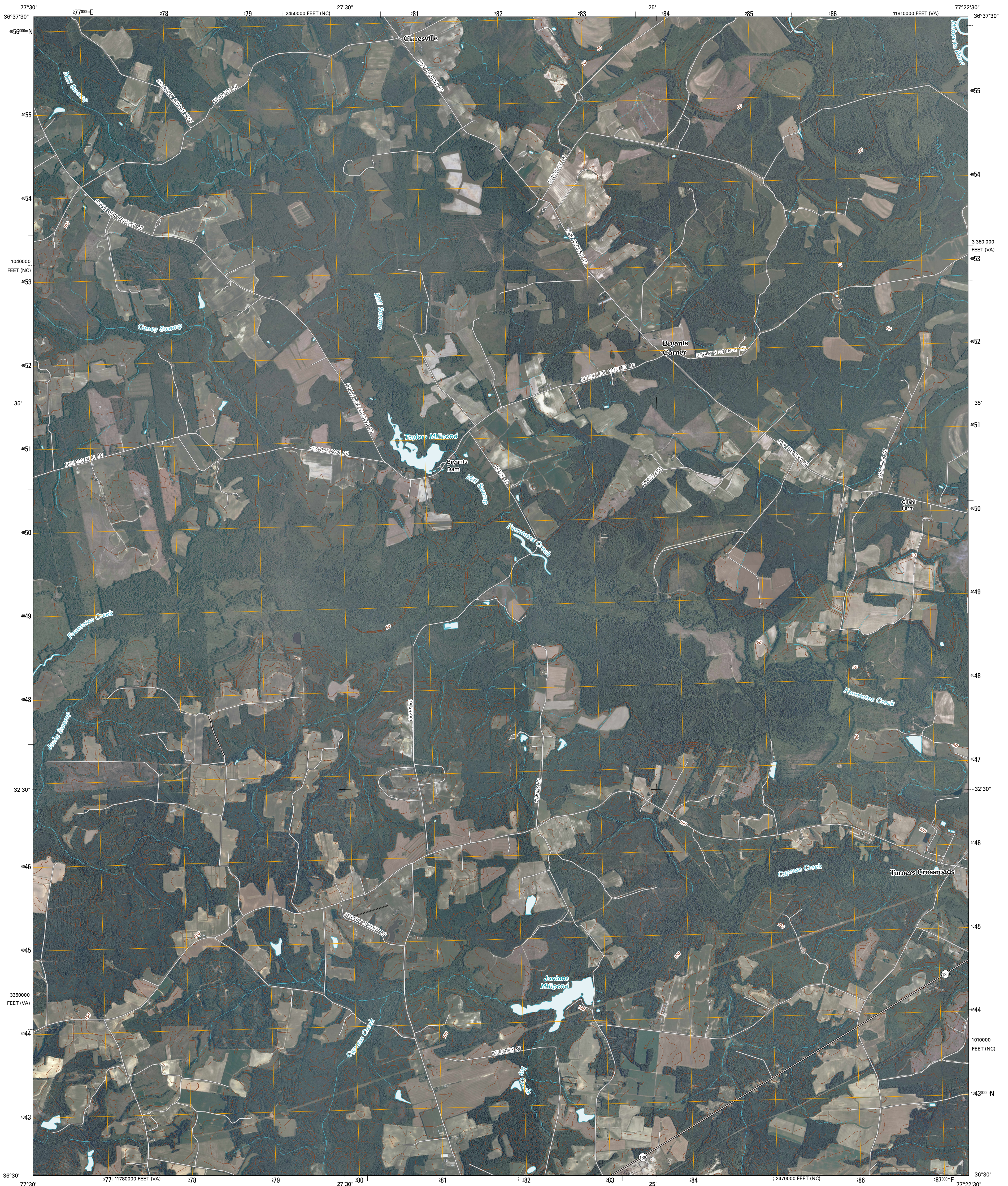




U.S. DEPARTMENT OF THE INTERIOR
U. S. GEOLOGICAL SURVEY

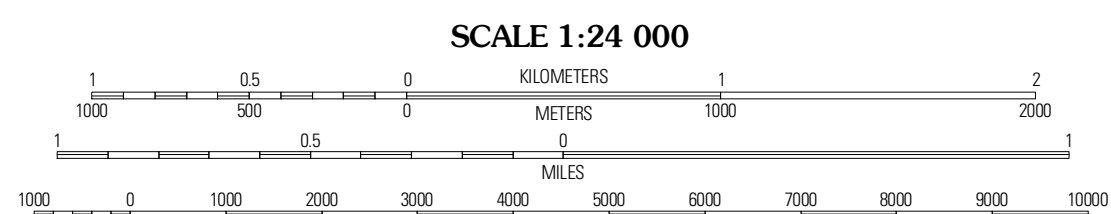
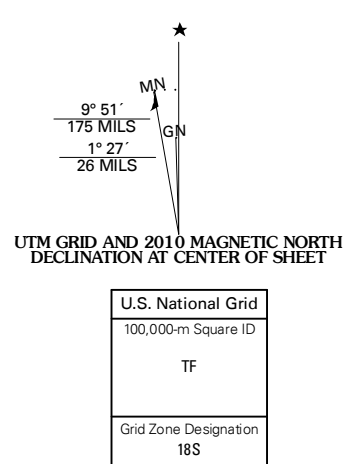


CLARESVILLE QUADRANGLE
VIRGINIA-NORTH CAROLINA
7.5-MINUTE SERIES



Produced by the United States Geological Survey
North American Datum of 1983 (NAD83)
World Geodetic System of 1984 (WGS84). Projection and
1 000-meter grid: Universal Transverse Mercator, Zone 18S
10 000-foot ticks: Virginia Coordinate System of 1983
(south zone) and North Carolina Coordinate System of 1983

Imagery:.....NAIP, June 2009 - July 2009
Roads:.....©2006-2010 Title Atlas
Names:.....GNIS, 2008
Hydrography:.....National Hydrography Dataset, 2009
Contours:.....National Elevation Dataset, 2008



CONTOUR INTERVAL 10 FEET
NORTH AMERICAN VERTICAL DATUM OF 1988

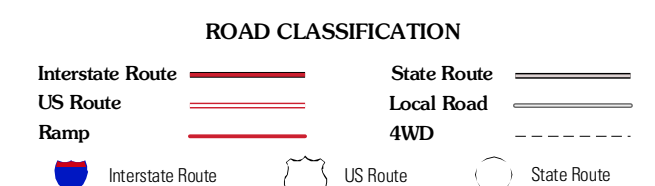
This map was produced to conform with version 0.5.10 of the draft USGS Standards for 7.5-Minute Quadrangle Maps. A metadata file associated with this product is draft version 0.5.11



QUADRANGLE LOCATION

Emporia	Adams Grove	Drewsville
Skippers	Claresville	Margarettsville
Weldon	Jackson	Galatia

ADJOINING 7.5' QUADRANGLES



CLARESVILLE, VA-NC
2010