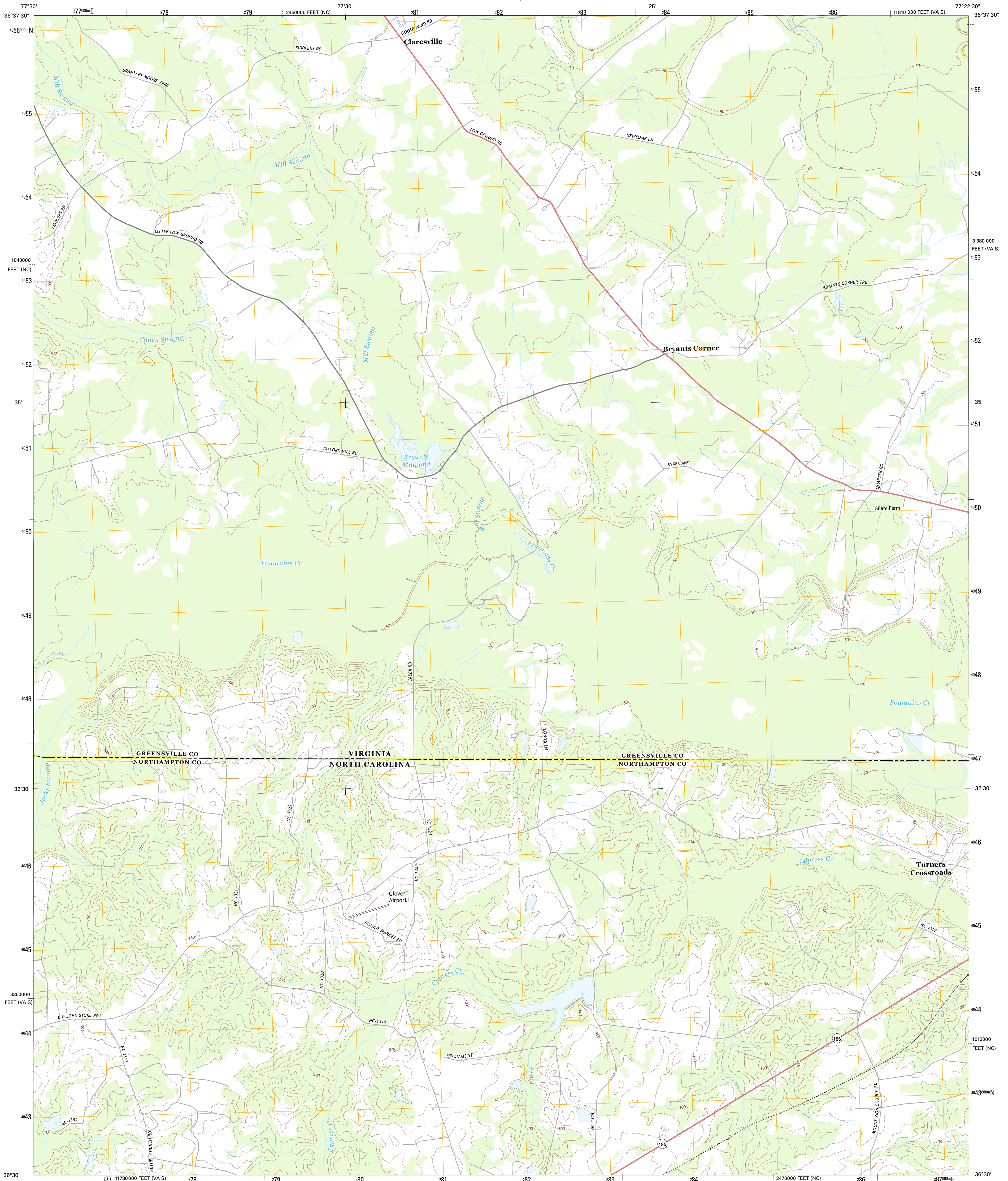




U.S. DEPARTMENT OF THE INTERIOR
U. S. GEOLOGICAL SURVEY

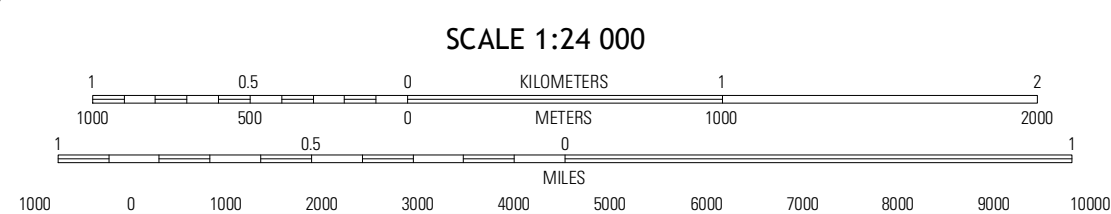
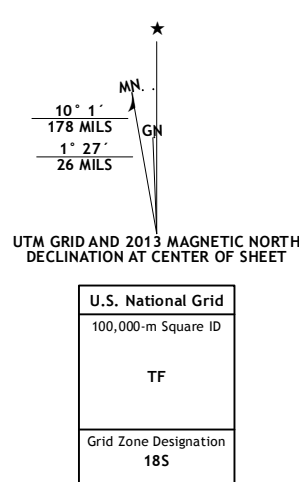


CLARESVILLE QUADRANGLE
VIRGINIA-NORTH CAROLINA
7.5-MINUTE SERIES



Produced by the United States Geological Survey
North American Datum of 1983 (NAD83)
World Geodetic System of 1984 (WGS84) Projection and
1 000-meter grid; Universal Transverse Mercator, Zone 18S
10 000-foot ticks; Virginia Coordinate System of 1983 (south
zone), North Carolina Coordinate System of 1983

Imagery.....NAIP, May 2012
Roads.....©2006-2012 TomTom
Names.....©2013 GNS
Hydrography.....National Hydrography Dataset, 2012
Contours.....National Elevation Dataset, 2008
Boundaries.....Census, IBWC, IBC, USGS, 1972 - 2012



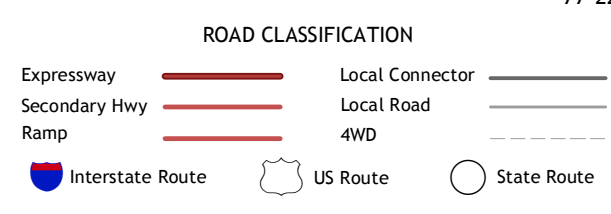
CONTOUR INTERVAL 10 FEET
NORTH AMERICAN VERTICAL DATUM OF 1988

This map was produced to conform with the
National Geospatial Program US Topo Product Standard, 2011.
A metadata file associated with this product is draft version 0.6.11



QUADRANGLE LOCATION

Emporia	Adams Grove	Drewryville
Skippers	Claresville	Murgantown
Weldon	Jackson	Galatia



CLARESVILLE, VA-NC
2013

ADJOINING 7.5 QUADRANGLES