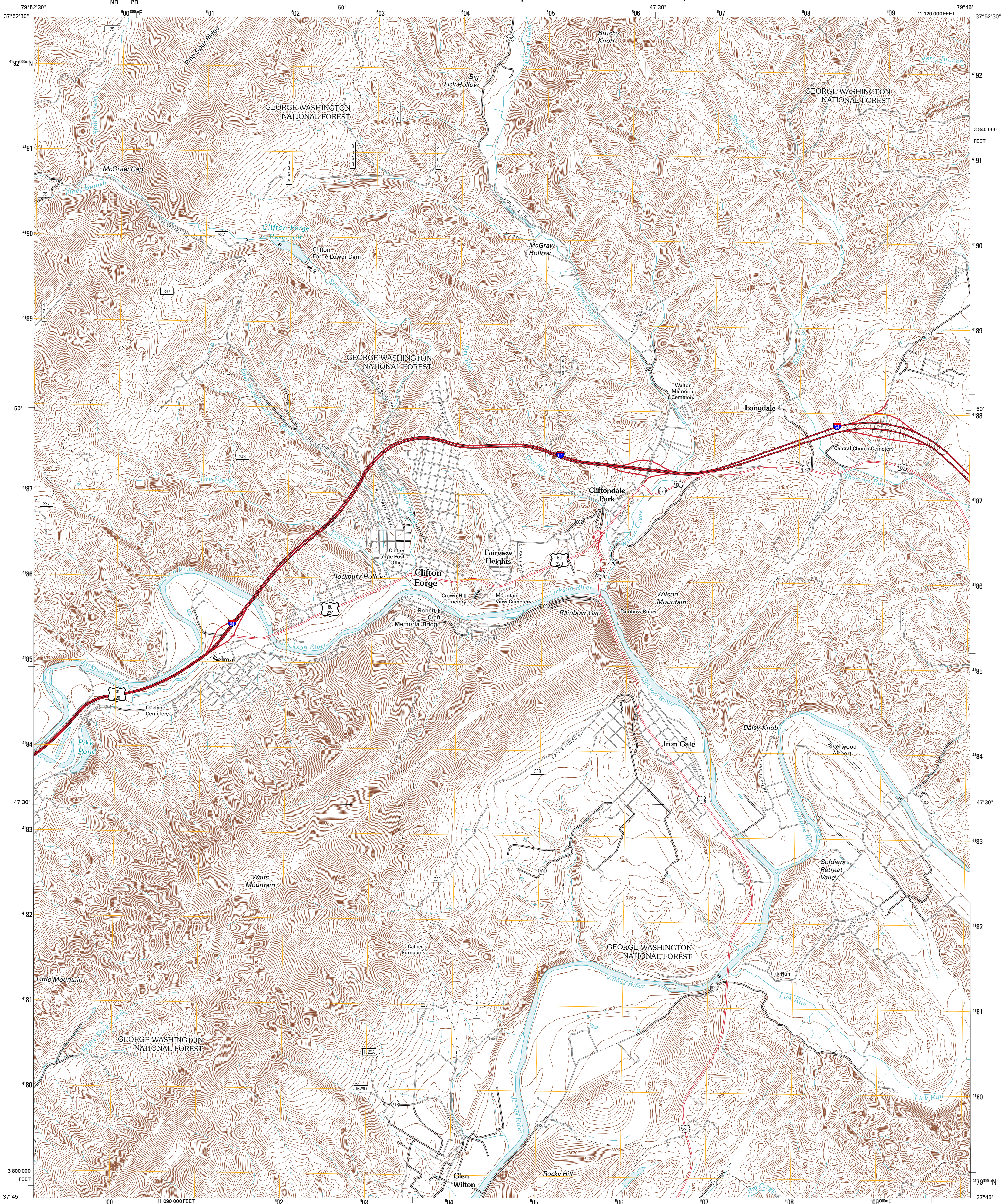




U.S. DEPARTMENT OF THE INTERIOR  
U. S. GEOLOGICAL SURVEY

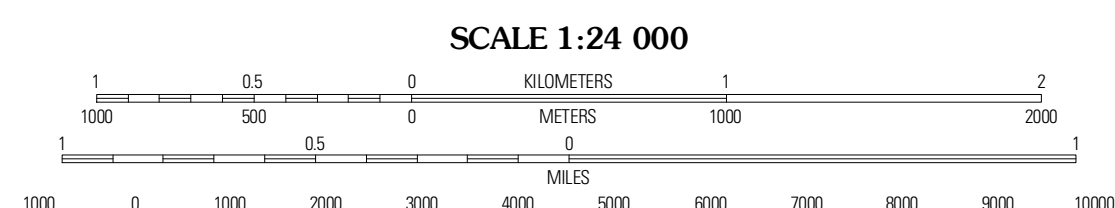
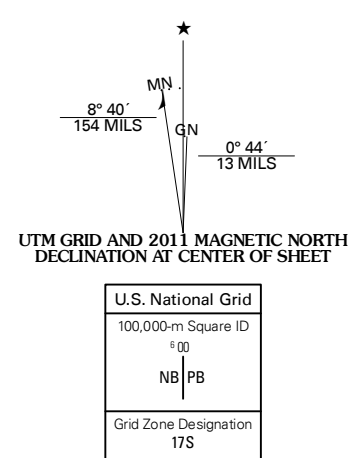


CLIFTON FORGE QUADRANGLE  
VIRGINIA  
7.5-MINUTE SERIES



Produced by the United States Geological Survey  
North American Datum of 1983 (NAD83)  
World Geodetic System of 1984 (WGS84), Projection, and  
1 000-meter grid: Universal Transverse Mercator, Zone 17S  
10 000-foot ticks: Virginia Coordinate System of 1983 (south zone)

Imagery:.....NAIP, August 2009  
Roads:.....©2006-2010 Tele Atlas  
Roads within US Forest Service Lands:.....FSTopo Data  
with limited Forest Service updates, 2009  
Names:.....GNIS, 2010  
Hydrography:.....National Hydrography Dataset, 2009  
Contours:.....National Elevation Dataset, 2002



CONTOUR INTERVAL 40 FEET  
NORTH AMERICAN VERTICAL DATUM OF 1988  
This map was produced to conform with version 0.5.10 of the  
draft USGS Standards for 7.5-Minute Quadrangle Maps.  
A metadata file associated with this product is draft version 0.5.12



Falling Spring	Healing Springs	Nimrod Hall
Covington	Clifton Forge	Longdale Furnace
Strom	Eagle Rock	Sugarloaf Mountain

ROAD CLASSIFICATION  
Interstate Route: State Route:   
US Route: Local Route:   
Ramp: 4WD:   
FS Primary Route: US Route: State Route:   
FS Passenger Route: FS High Clearance Route:

Check with local Forest Service unit for current travel conditions and restrictions.

CLIFTON FORGE, VA  
2011

ADJOINING 7.5 QUADRANGLES