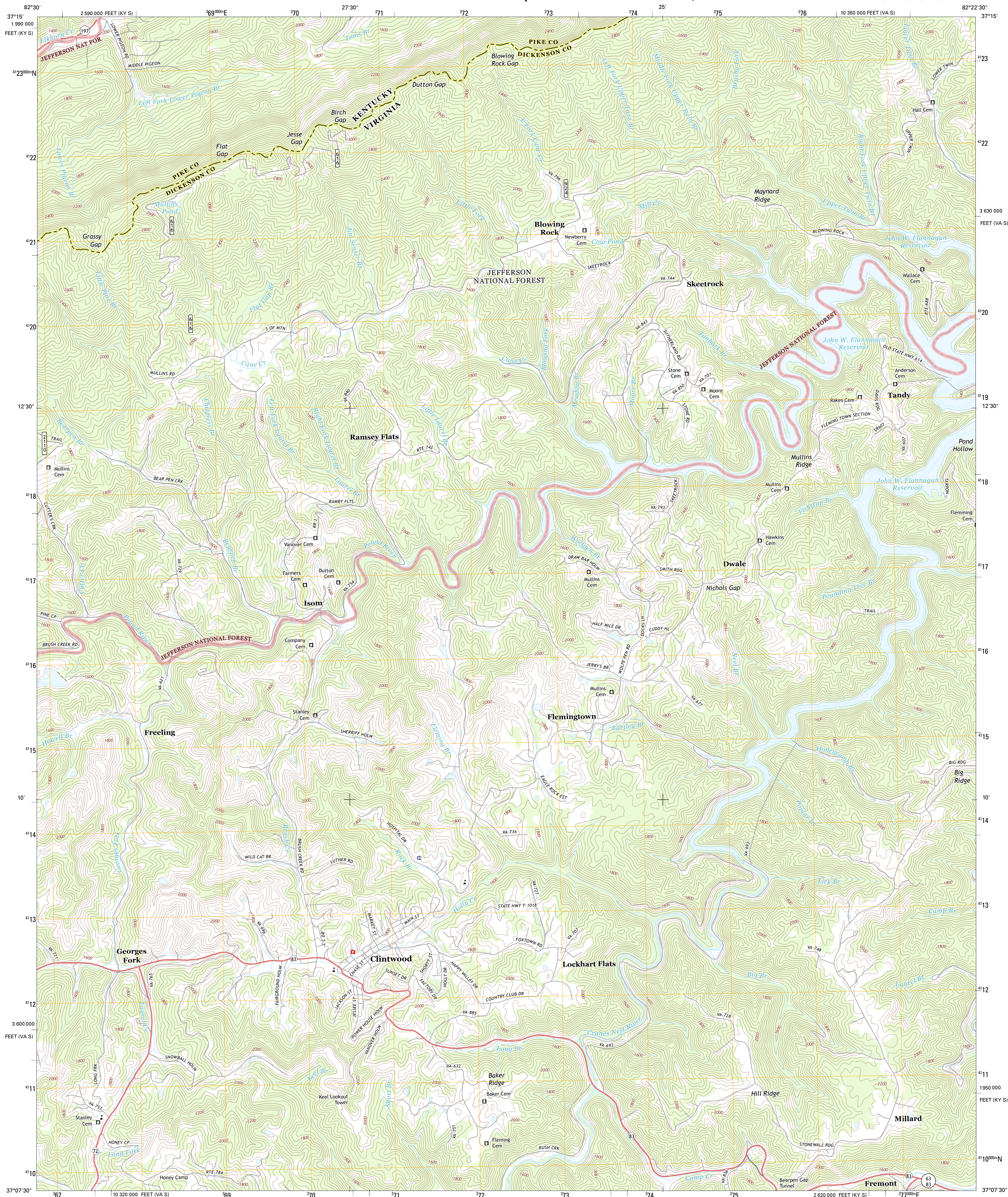




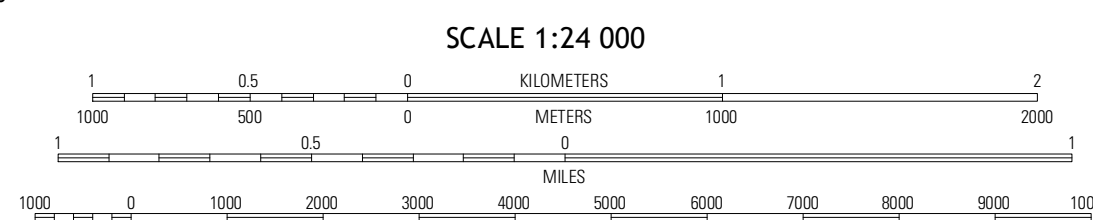
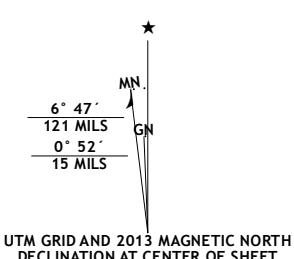
U.S. DEPARTMENT OF THE INTERIOR
U. S. GEOLOGICAL SURVEY



CLINTWOOD QUADRANGLE
VIRGINIA-KENTUCKY
7.5-MINUTE SERIES

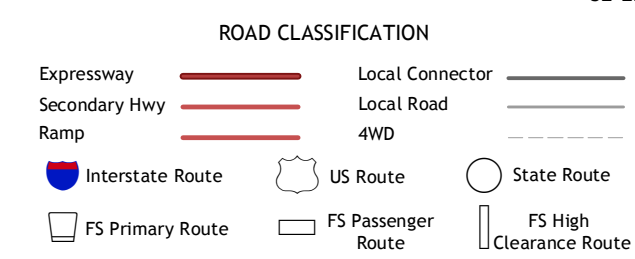


Produced by the United States Geological Survey
North American Datum of 1983 (NAD83)
World Geodetic System of 1984 (WGS84). Projection and
1 000-meter grid: Universal Transverse Mercator, Zone 17S
10 000-foot ticks: Virginia Coordinate System of 1983 (south
zone), Kentucky Coordinate System of 1983 (south zone)



QUADRANGLE LOCATION

Dorton	Hellier	Elkhorn City
Jenkins East	Clintwood	Hayti
Pound	Caney Ridge	Nora



Check with local Forest Service unit
for current travel conditions and restrictions.

CLINTWOOD, VA-KY
2013

Imagery.....NAIP, June 2012
Roads.....©2006-2012 TomTom
Roads within US Forest Service Lands
with limited Forest Service updates, 2013
Names.....GNIS, 2013
Hydrography.....National Hydrography Dataset, 2012
Contours.....National Elevation Dataset, 2002
Boundaries.....Census, IBWC, IBC, USGS, 1972 - 2012

U.S. National Grid

100,000-m Square ID
LB
Grid Zone Designation
17S

CONTOUR INTERVAL 40 FEET
NORTH AMERICAN VERTICAL DATUM OF 1988

This map was produced to conform with the
National Geospatial Program US Topo Product Standard, 2011.
A metadata file associated with this product is draft version 0.6.11

ADJOINING 7.5 QUADRANGLES