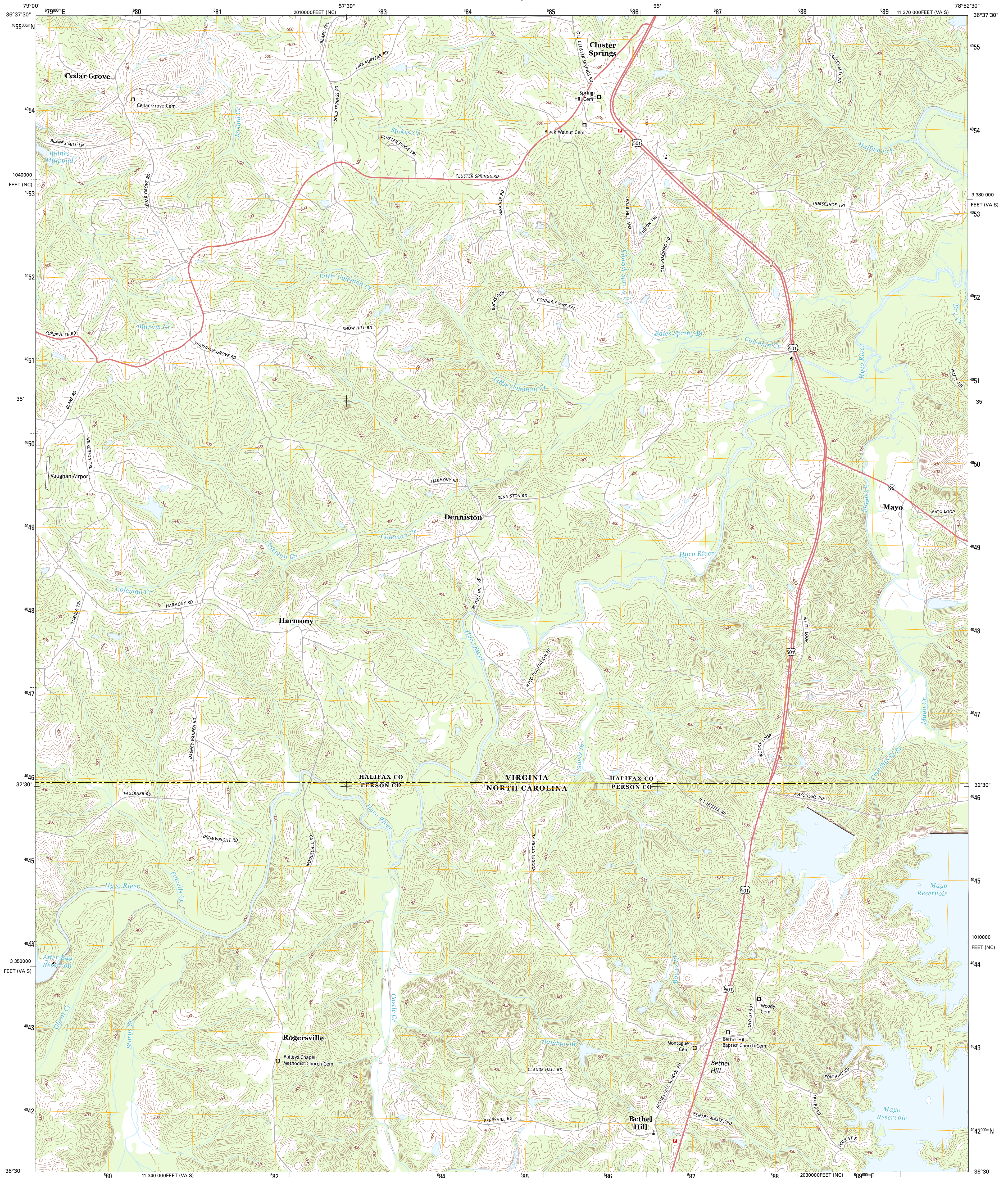




U.S. DEPARTMENT OF THE INTERIOR  
U. S. GEOLOGICAL SURVEY

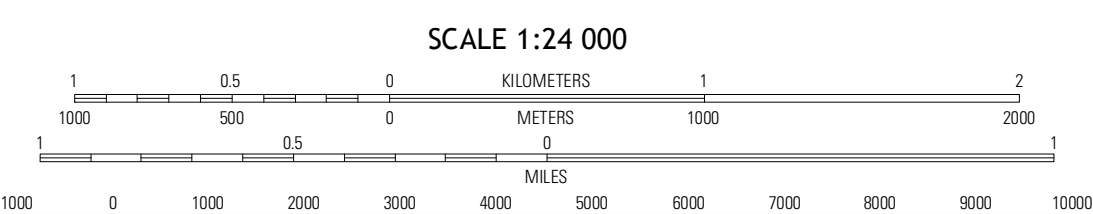
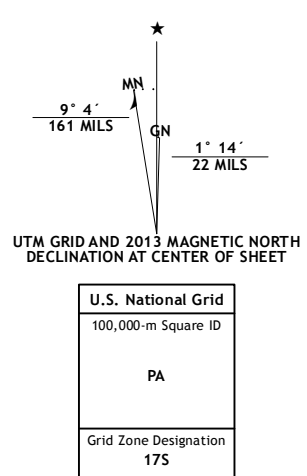


CLUSTER SPRINGS QUADRANGLE  
VIRGINIA-NORTH CAROLINA  
7.5-MINUTE SERIES



Produced by the United States Geological Survey  
North American Datum of 1983 (NAD83)  
World Geodetic System of 1984 (WGS84) Projection and  
1 000-meter grid; Universal Transverse Mercator, Zone 17S  
10 000-foot ticks; Virginia Coordinate System of 1983 (south  
zone), North Carolina Coordinate System of 1983

Imagery.....N.A.I.P., May 2012  
Roads.....©2006-2012 TomTom  
Names.....©2011-2012 GNIS, 2013  
Hydrography.....National Hydrography Dataset, 2012  
Contours.....National Elevation Dataset, 1999  
Boundaries.....Census, IBG, USGS, 1972 - 2012



CONTOUR INTERVAL 10 FEET  
NORTH AMERICAN VERTICAL DATUM OF 1988

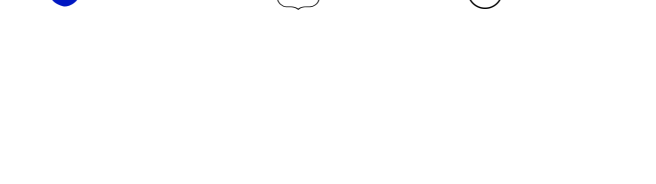
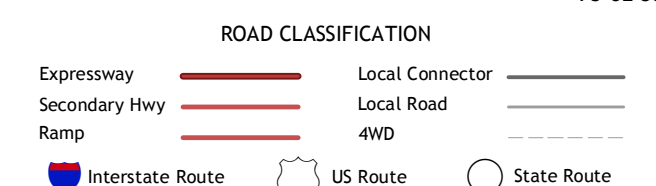
This map was produced to conform with the  
National Geospatial Program US Topo Product Standard, 2011.  
A metadata file associated with this product is draft version 0.6.11



QUADRANGLE LOCATION

Oak Level	South Boston	Omega
Alton	Cluster Springs	Virginia
Olive Hill	Rosboro	Triple Springs

ADJOINING 7.5 QUADRANGLES



CLUSTER SPRINGS, VA-NC  
2013