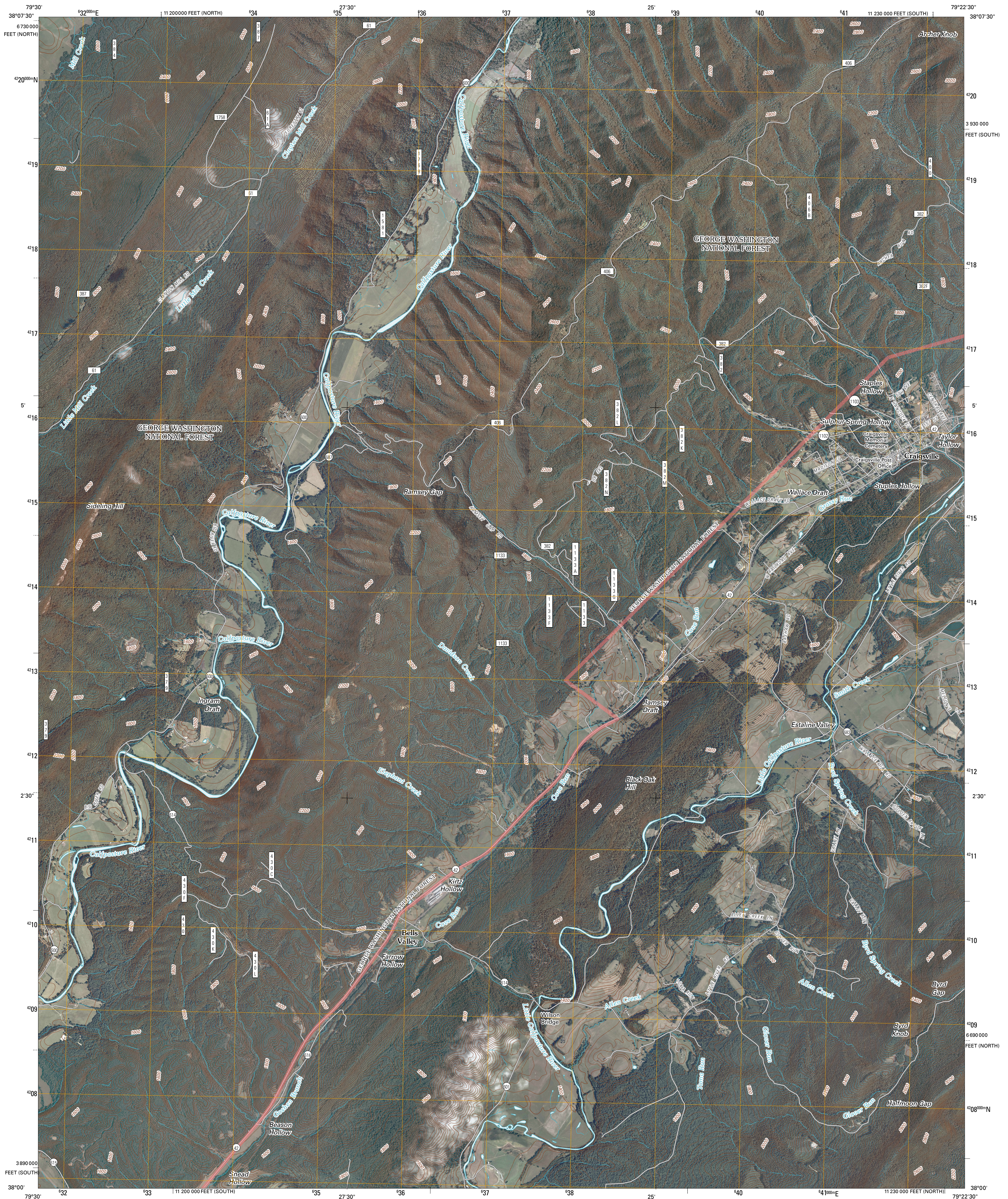




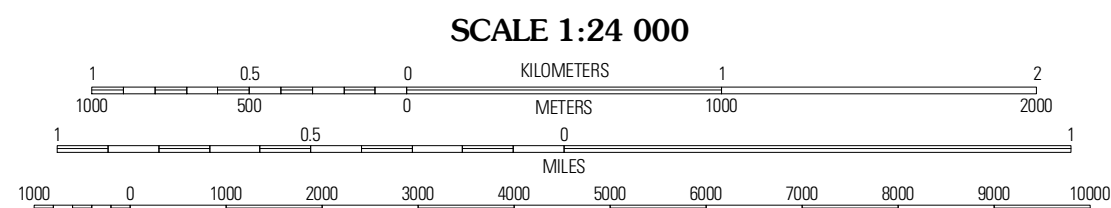
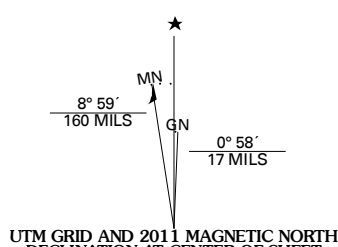
U.S. DEPARTMENT OF THE INTERIOR
U. S. GEOLOGICAL SURVEY



CRAIGSVILLE QUADRANGLE
VIRGINIA
7.5-MINUTE SERIES



Produced by the United States Geological Survey
North American Datum of 1983 (NAD83)
Roads: 2006-2010 Tele Atlas
Roads within US Forest Service Lands: FSTopo Data with limited Forest Service updates, 2009
Names: GNS, 2009
Hydrography: National Hydrography Dataset, 2009
Contours: National Elevation Dataset, 2002



SCALE 1:24 000

CONTOUR INTERVAL 40 FEET
NORTH AMERICAN VERTICAL DATUM OF 1988

This map was produced to conform with version 0.5.10 of the draft USGS Standards for 7.5-Minute Quadrangle Maps. A metadata file associated with this product is draft version 0.5.13



QUADRANGLE LOCATION

Williamsville	Deerfield	Elkton Knob
Green Valley	Craigsville	Augusta Springs
Milboro	Goshen	Brownsburg

ADJACING 7.5' QUADRANGLES

ROAD CLASSIFICATION

Interstate Route	State Route
US Route	Local Road
Ramp	4WD

Interstate Route
 US Route
 State Route
 FS Primary Route
 FS Passenger Route
 FS High Clearance Route

Check with local Forest Service unit for current travel conditions and restrictions.

CRAIGSVILLE, VA
2011