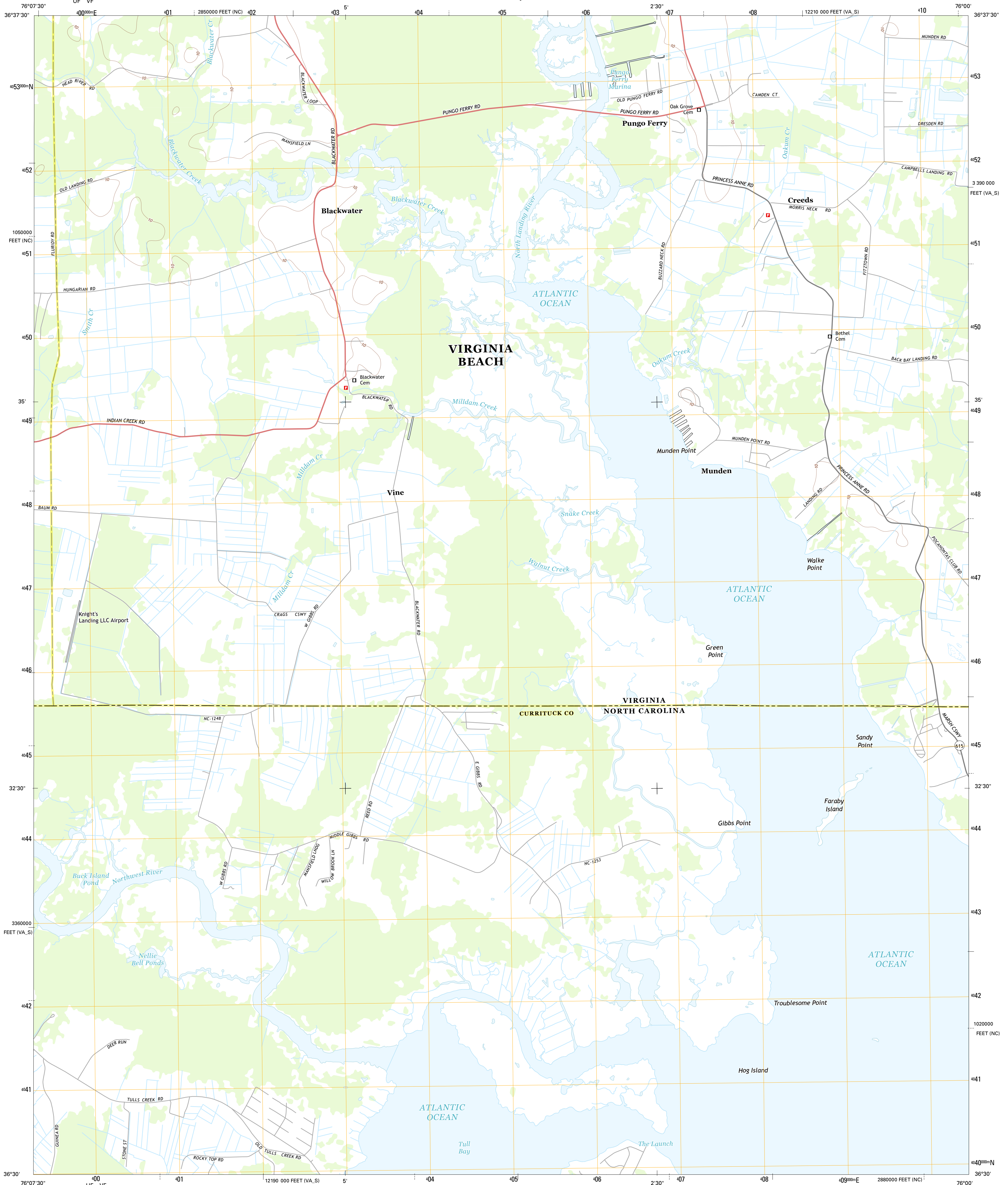




U.S. DEPARTMENT OF THE INTERIOR
U. S. GEOLOGICAL SURVEY

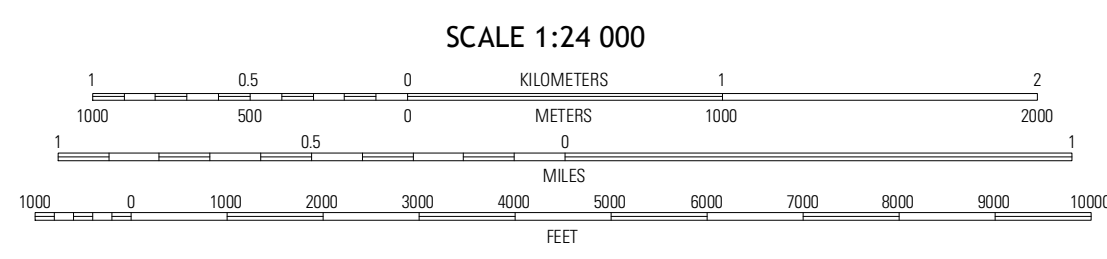
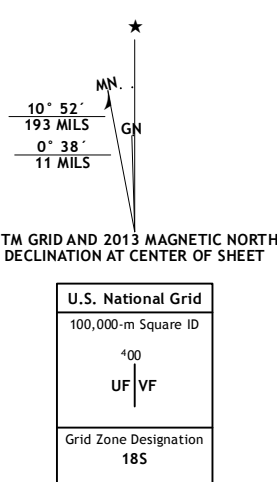


CREEDS QUADRANGLE
VIRGINIA-NORTH CAROLINA
7.5-MINUTE SERIES



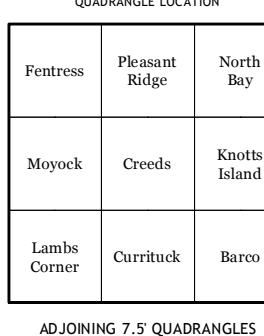
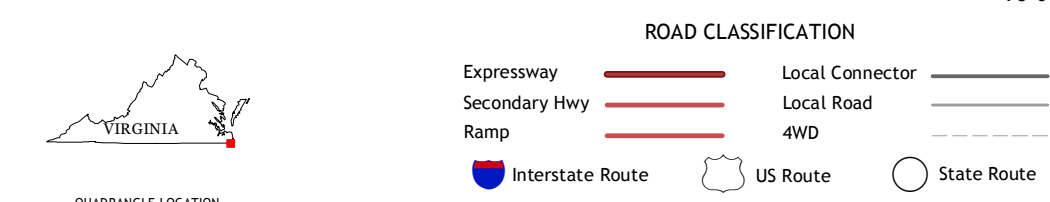
Produced by the United States Geological Survey
North American Datum of 1983 (NAD83)
World Geodetic System of 1984 (WGS84) Projection and
1 000-meter grid: Universal Transverse Mercator, Zone 18S
10 000-foot ticks: Virginia Coordinate System of 1983 (south zone), North Carolina Coordinate System of 1983

Imagery: N.A.I.P., June 2012
Roads: 2006-2012 TomTom
Names: GNIS, 2013
Hydrography: National Hydrography Dataset, 2012
Contours: National Elevation Dataset, 2010
Boundaries: Census, IBWC, IBC, USGS, 1972-2012



CONTOUR INTERVAL 10 FEET
NORTH AMERICAN VERTICAL DATUM OF 1988

This map was produced to conform with the National Geospatial Program US Topo Product Standard, 2011. A metadata file associated with this product is draft version 0.6.11



CREEDS, VA-NC
2013