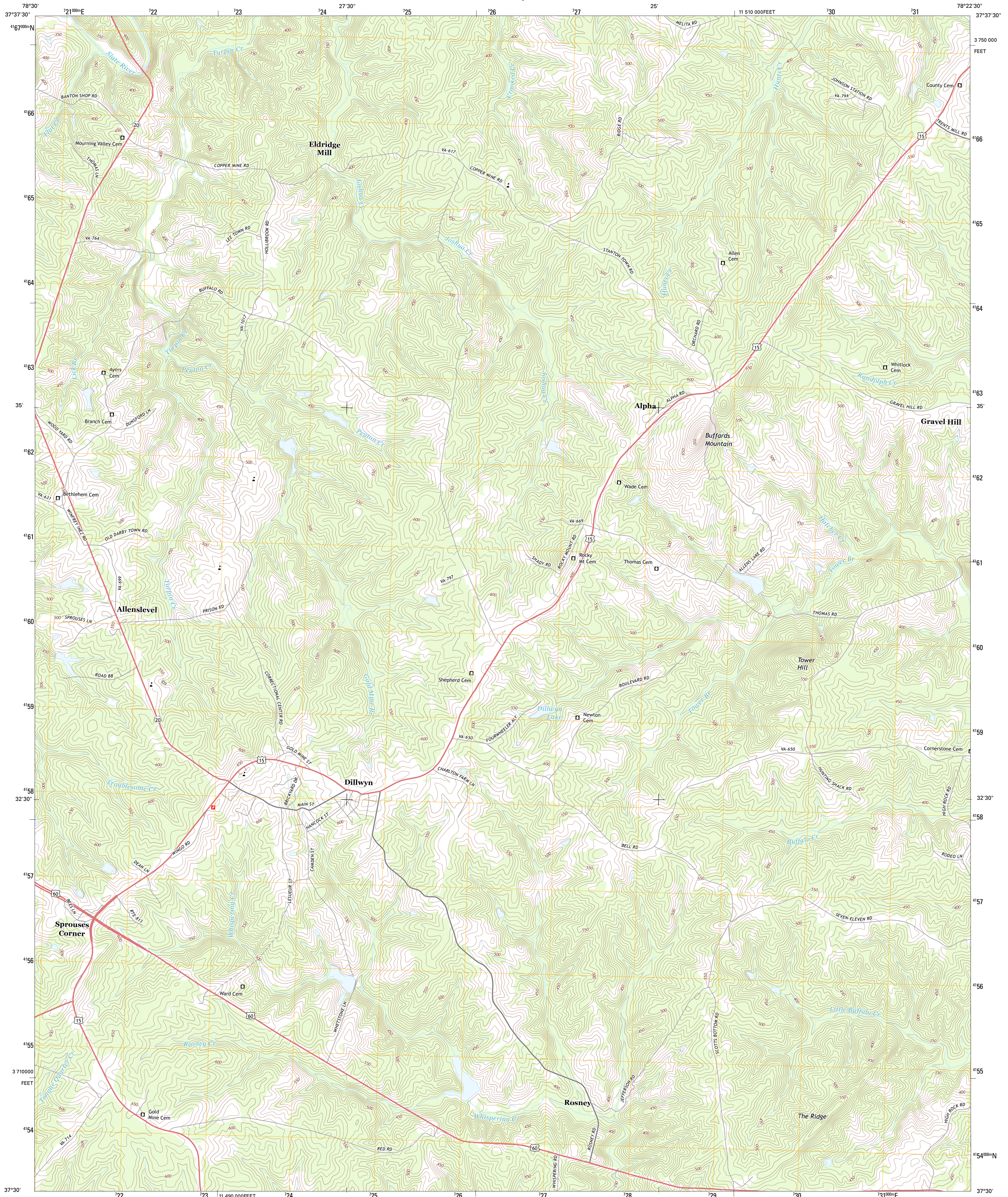




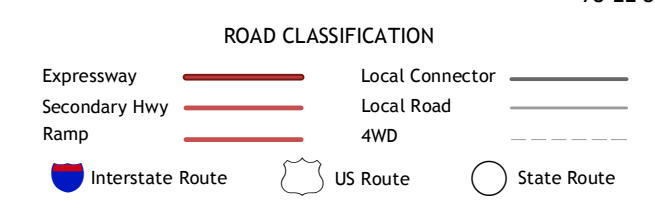
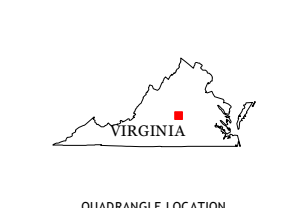
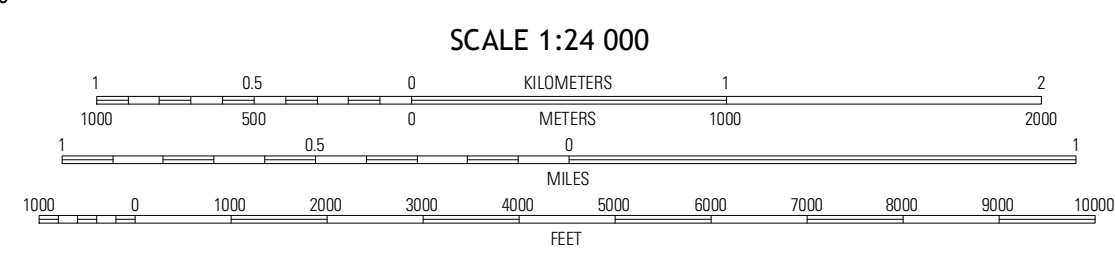
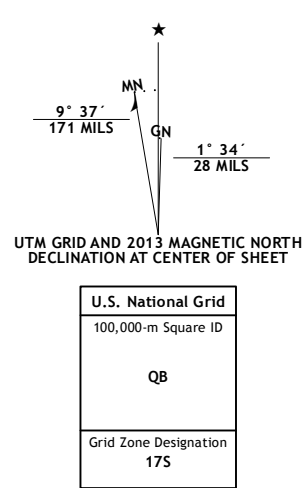
U.S. DEPARTMENT OF THE INTERIOR
U. S. GEOLOGICAL SURVEY



DILLWYN QUADRANGLE
VIRGINIA-BUCKINGHAM CO.
7.5-MINUTE SERIES



Produced by the United States Geological Survey
North American Datum of 1983 (NAD83)
World Geodetic System of 1984 (WGS84). Projection and
1 000-meter grid: Universal Transverse Mercator, Zone 17S
10 000-foot ticks: Virginia Coordinate System of 1983 (south
zone)



QUADRANGLE LOCATION

Glenmore	Diana Mills	Arvonis
Buckingham	Dillwyn	Gold Hill
Andersenville	Willis Mountain	Hillcrest

DILLWYN, VA
2013

CONTOUR INTERVAL 10 FEET
NORTH AMERICAN VERTICAL DATUM OF 1988

This map was produced to conform with the
National Geospatial Program US Topo Product Standard, 2011.
A metadata file associated with this product is draft version 0.6.11

ADJOINING 7.5 QUADRANGLES