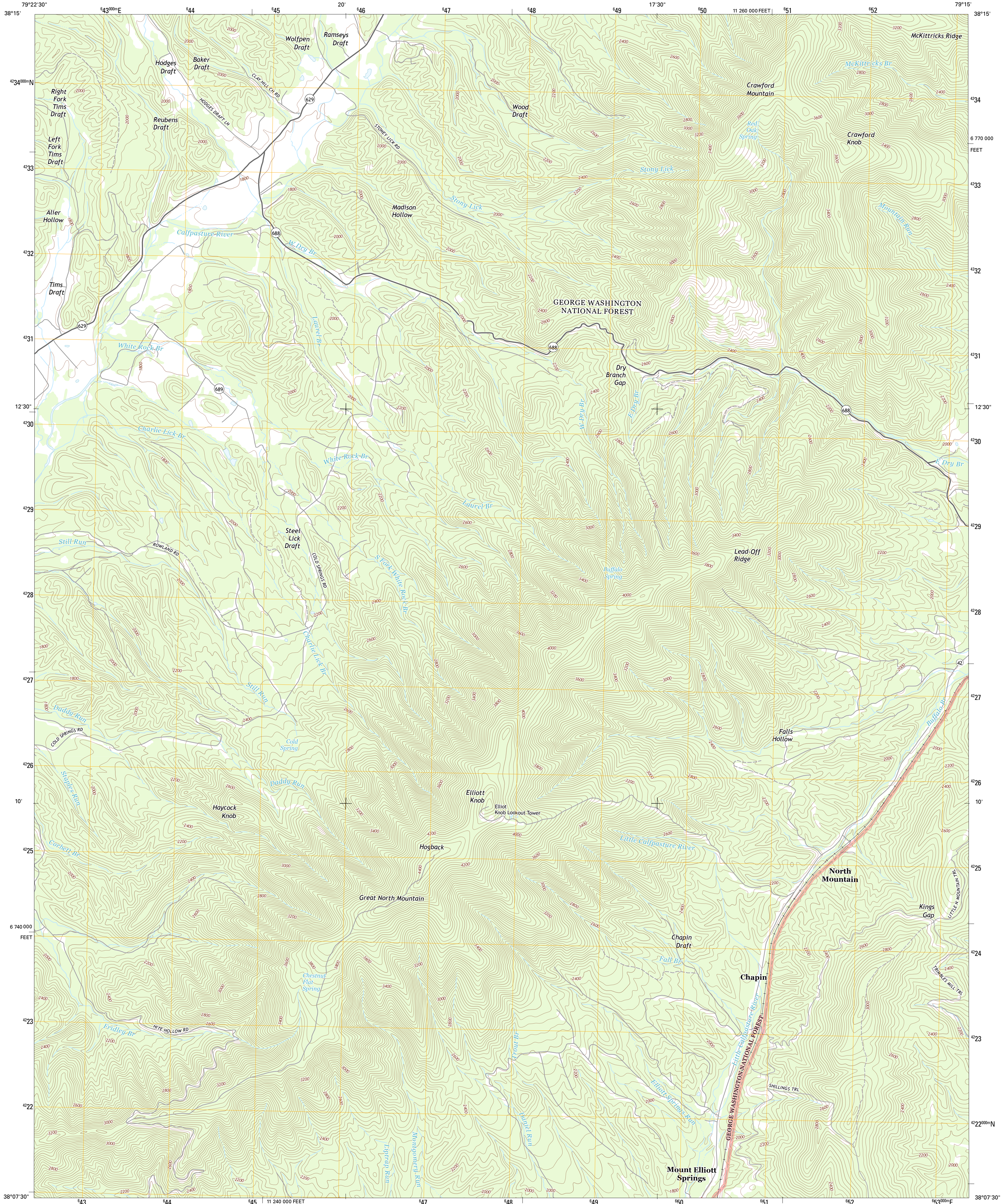




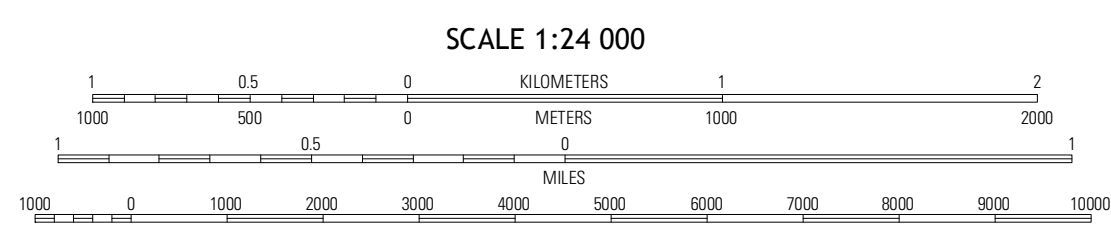
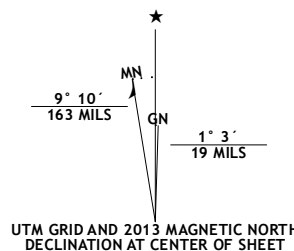
U.S. DEPARTMENT OF THE INTERIOR  
U. S. GEOLOGICAL SURVEY



ELLIOTT KNOB QUADRANGLE  
VIRGINIA-AUGUSTA CO.  
7.5-MINUTE SERIES



Produced by the United States Geological Survey  
North American Datum of 1983 (NAD83)  
World Geodetic System of 1984 (WGS84) Projection and  
1 000-meter grid: Universal Transverse Mercator, Zone 17S  
10 000-foot ticks: Virginia Coordinate System of 1983 (north zone)



QUADRANGLE LOCATION

McDowell	West Augusta	Stokesville
Dierfield	Elliott Knob	Churchville
Craigville	Augusta Springs	Greenville

**ROAD CLASSIFICATION**

- Expressway
- Secondary Hwy
- Ramp
- Interstate Route
- FS Primary Route
- Local Connector
- Local Road
- 4WD
- US Route
- FS Passenger Route
- FS High Clearance Route
- State Route
- FS High

Check with local Forest Service unit for current travel conditions and restrictions.

Imagery: N.A.I.P., June 2012  
Roads: ©2006-2012, TomTom  
Roads within US Forest Service Lands with limited Forest Service updates, 2013  
Names: ©2006-2012, TomTom  
Hydrography: National Hydrography Dataset, 2012  
Contours: National Elevation Dataset, 2002  
Boundaries: Census, IBWC, IBC, USGS, 1972-2012

U.S. National Grid
100,000-m Square ID
PC
Grid Zone Designation
17S

CONTOUR INTERVAL 40 FEET  
NORTH AMERICAN VERTICAL DATUM OF 1988  
This map was produced to conform with the National Geospatial Program US Topo Product Standard, 2011. A metadata file associated with this product is draft version 0.6.11

ELLIOTT KNOB, VA  
2013

ADJOINING 7.5 QUADRANGLES