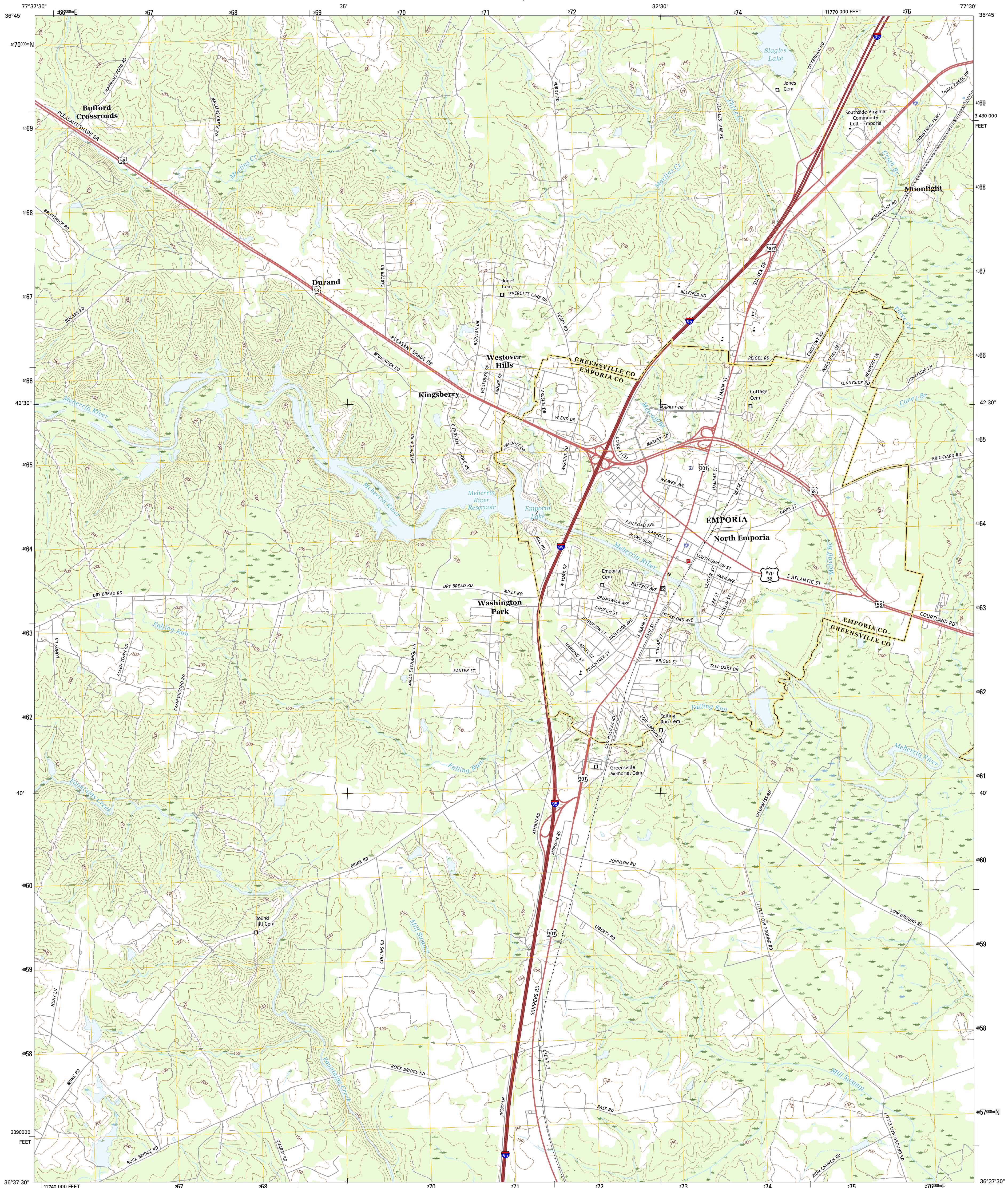




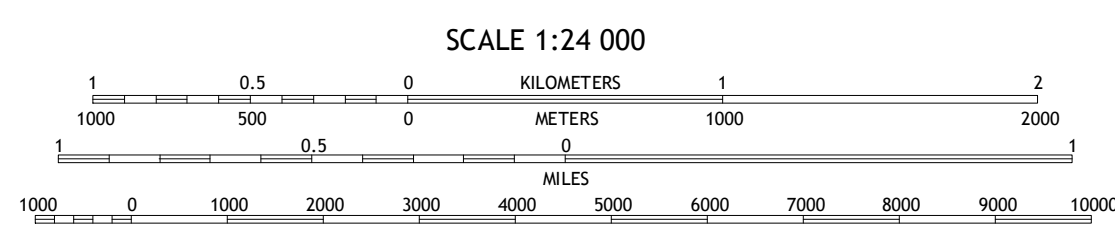
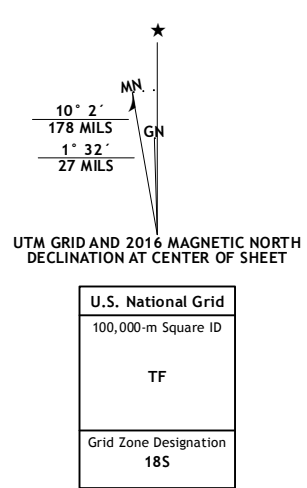
U.S. DEPARTMENT OF THE INTERIOR
U.S. GEOLOGICAL SURVEY



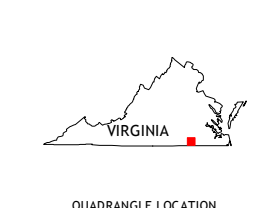
EMPORIA QUADRANGLE
VIRGINIA
7.5-MINUTE SERIES



Produced by the United States Geological Survey
 North American Datum of 1983 (NAD83)
 World Geodetic System of 1984 (WGS84). Projection and
 1 000-meter grid: Universal Transverse Mercator, Zone 18S
 10 000-foot ticks: Virginia Coordinate System of 1983 (south
 zone)
 This map is not a legal document. Boundaries may be
 generalized for this map scale. Private lands within government
 reservations may not be shown. Obtain permission before
 entering private lands.
 Imagery:.....NAIP, August 2014
 Roads:.....U.S. Census Bureau, 2015 - 2016
 Names:.....GNIS, 2016
 Hydrography:.....National Hydrography Dataset, 2014
 Contours:.....National Elevation Dataset, 2008
 Boundaries:.....Multiple sources; see metadata file 1972 - 2016
 Wetlands:.....FWS National Wetlands Inventory 1977 - 2014



CONTOUR INTERVAL 10 FEET
 NORTH AMERICAN VERTICAL DATUM OF 1988
 This map was produced to conform with the
 National Geospatial Program US Topo Product Standard, 2011.
 A metadata file associated with this product is draft version 0.6.19



ADJOINING QUADRANGLES

1	2	3
4	5	6
7	8	

ROAD CLASSIFICATION

	Expressway		Local Connector
	Secondary Hwy		Local Road
	Ramp		4WD
	Interstate Route		US Route
			State Route

1 Smoky Ordinary
 2 Purdy
 3 Jarrett
 4 Ante
 5 Adams Grove
 6 Barley
 7 Skippers
 8 Claresville

EMPORIA, VA
2016

