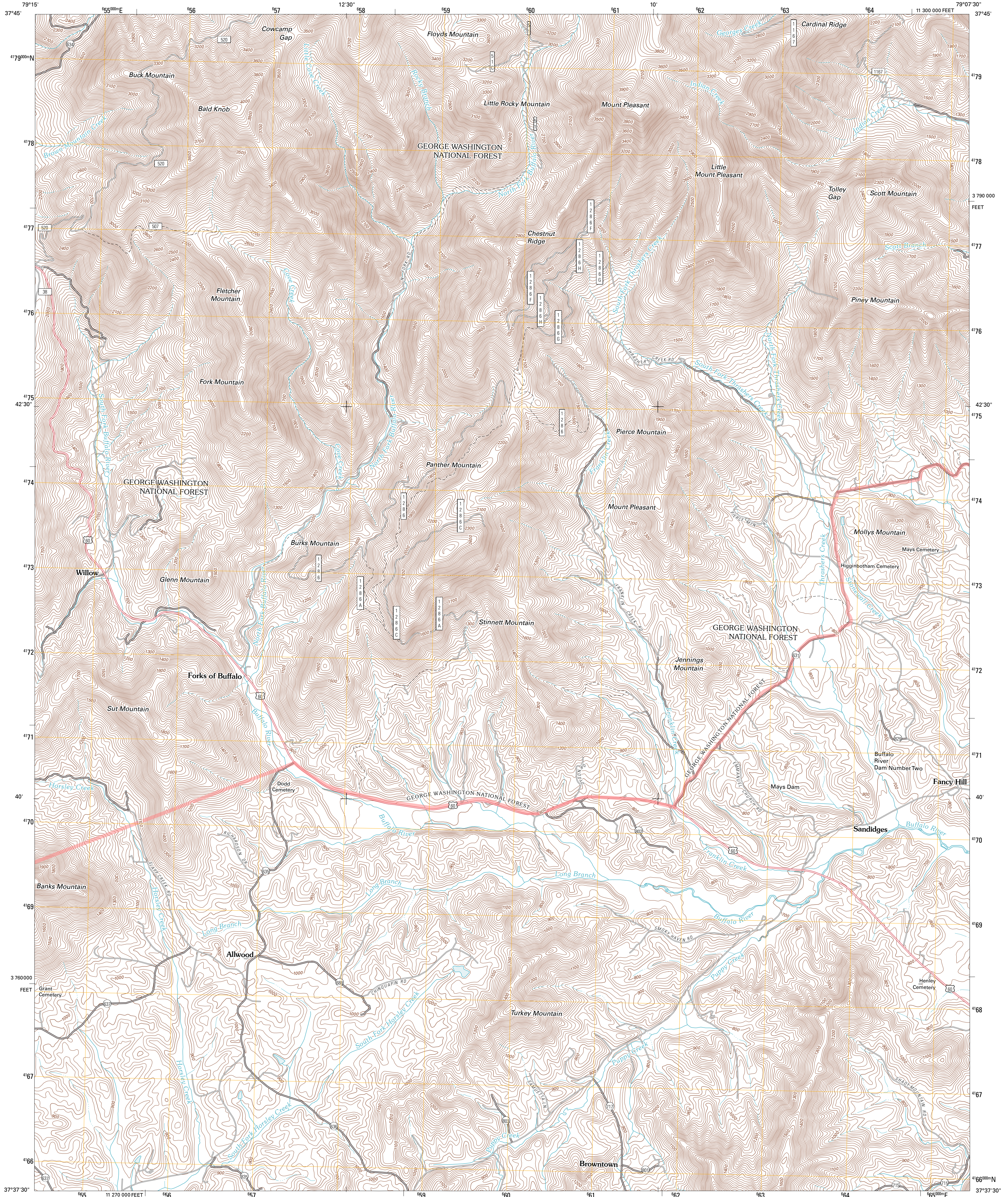




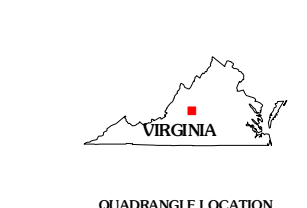
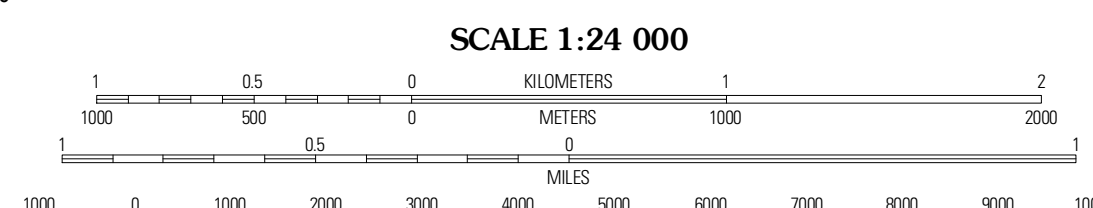
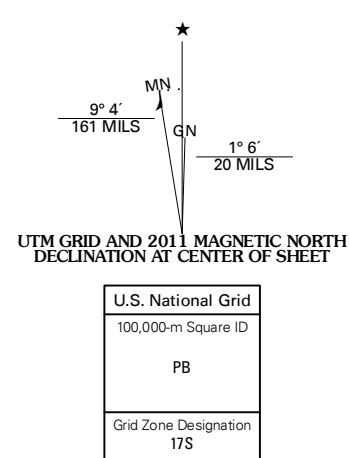
U.S. DEPARTMENT OF THE INTERIOR
U. S. GEOLOGICAL SURVEY



FORKS OF BUFFALO QUADRANGLE
VIRGINIA
7.5-MINUTE SERIES

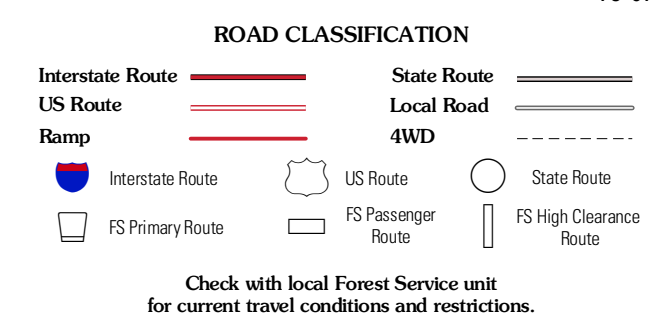


Produced by the United States Geological Survey
North American Datum of 1983 (NAD83)
World Geodetic System of 1984 (WGS84). Projection and
1 000-meter grid: Universal Transverse Mercator, Zone 17S
10 000-foot ticks: Virginia Coordinate System of 1983 (south
zone)



Cornwall	Montebello	Massies Mill
Buena Vista	Forks of Buffalo	Piney River
Big Island	Tobacco Row Mountain	Anheist

ADJOINING 7.5 QUADRANGLES



FORKS OF BUFFALO, VA
2011

CONTOUR INTERVAL 40 FEET
NORTH AMERICAN VERTICAL DATUM OF 1988
This map was produced to conform with version 0.5.10 of the
draft USGS Standards for 7.5-Minute Quadrangle Maps.
A metadata file associated with this product is draft version 0.5.12

Imagery: NADIP, July 2009
Roads: ©2006-2010 Tele Atlas
Roads within US Forest Service Lands: FSTopo Data
with limited Forest Service updates, 2009
Names: ©2010
Hydrography: National Hydrography Dataset, 2009
Contours: National Elevation Dataset, 1999