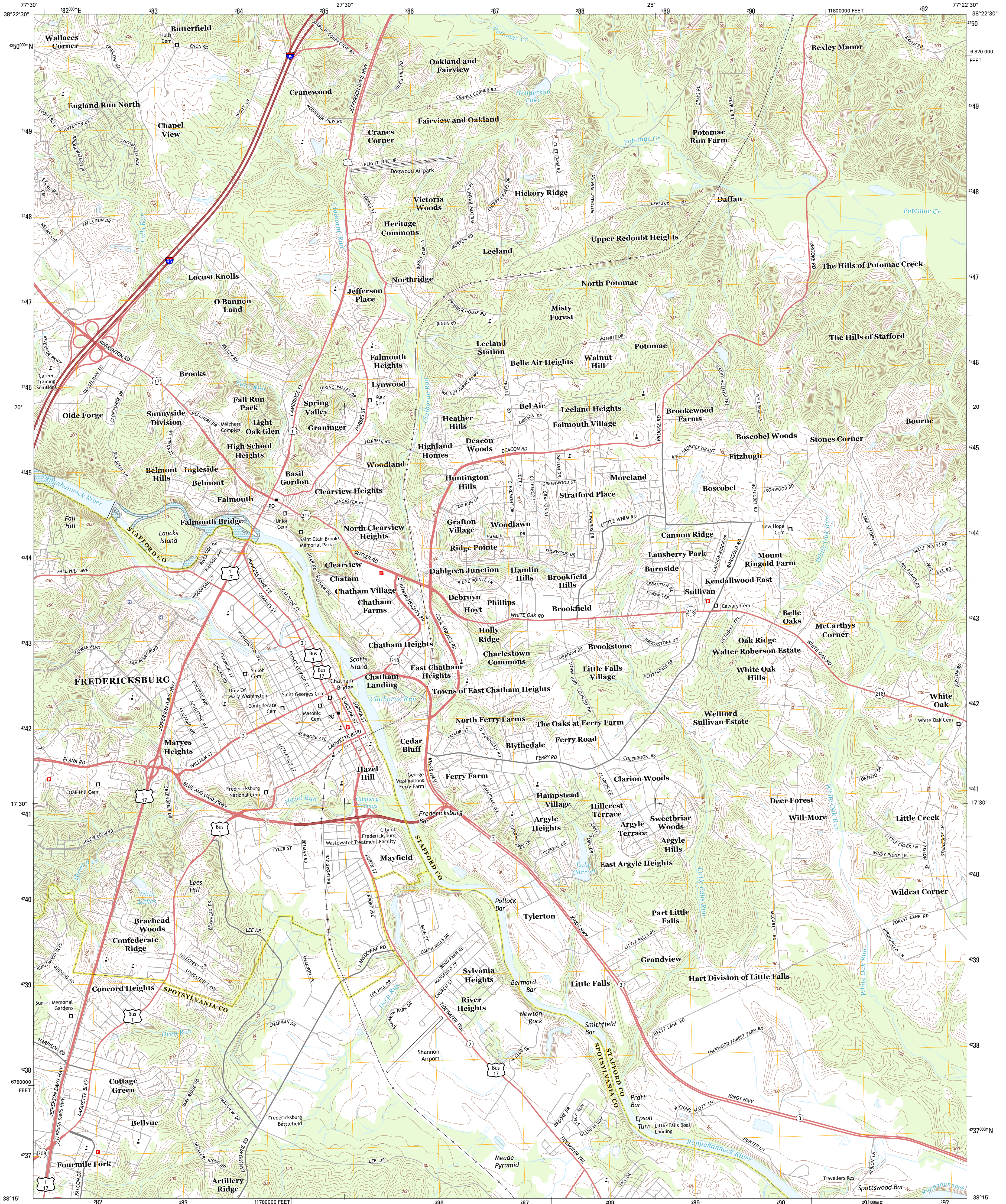




U.S. DEPARTMENT OF THE INTERIOR
U. S. GEOLOGICAL SURVEY



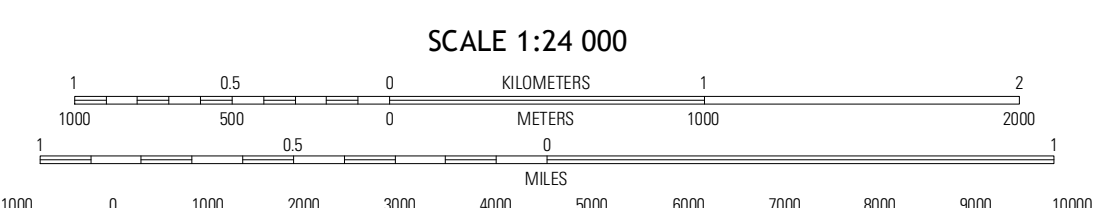
FREDERICKSBURG QUADRANGLE
VIRGINIA
7.5-MINUTE SERIES



Produced by the United States Geological Survey
North American Datum of 1983 (NAD83)
World Geodetic System of 1984 (WGS84) Projection and
1 000-meter grid; Universal Transverse Mercator, Zone 18S
10 000-foot ticks; Virginia Coordinate System of 1983 (north zone)

UTM GRID AND 2011 MAGNETIC NORTH DECLINATION AT CENTER OF SHEET

U.S. National Grid	18S
Grid Zone Designation	18S



ROAD CLASSIFICATION

- Expressway
- Secondary Hwy
- Ramp
- Local Connector
- Local Road
- 4WD
- Interstate Route
- US Route
- State Route

QUADRANGLE LOCATION

Stafford	Stafford	Wilderwater
Salem Church	Fredericksburg	Panopamunty
Spotsylvania	Guinea	Rappahannock Academy

ADJOINING 7.5 QUADRANGLES

CONTOUR INTERVAL 10 FEET
NORTH AMERICAN VERTICAL DATUM OF 1988

This map was produced to conform with the National Geospatial Program US Topo Product Standard, 2011. A metadata file associated with this product is draft version 0.6.11

FREDERICKSBURG, VA
2013