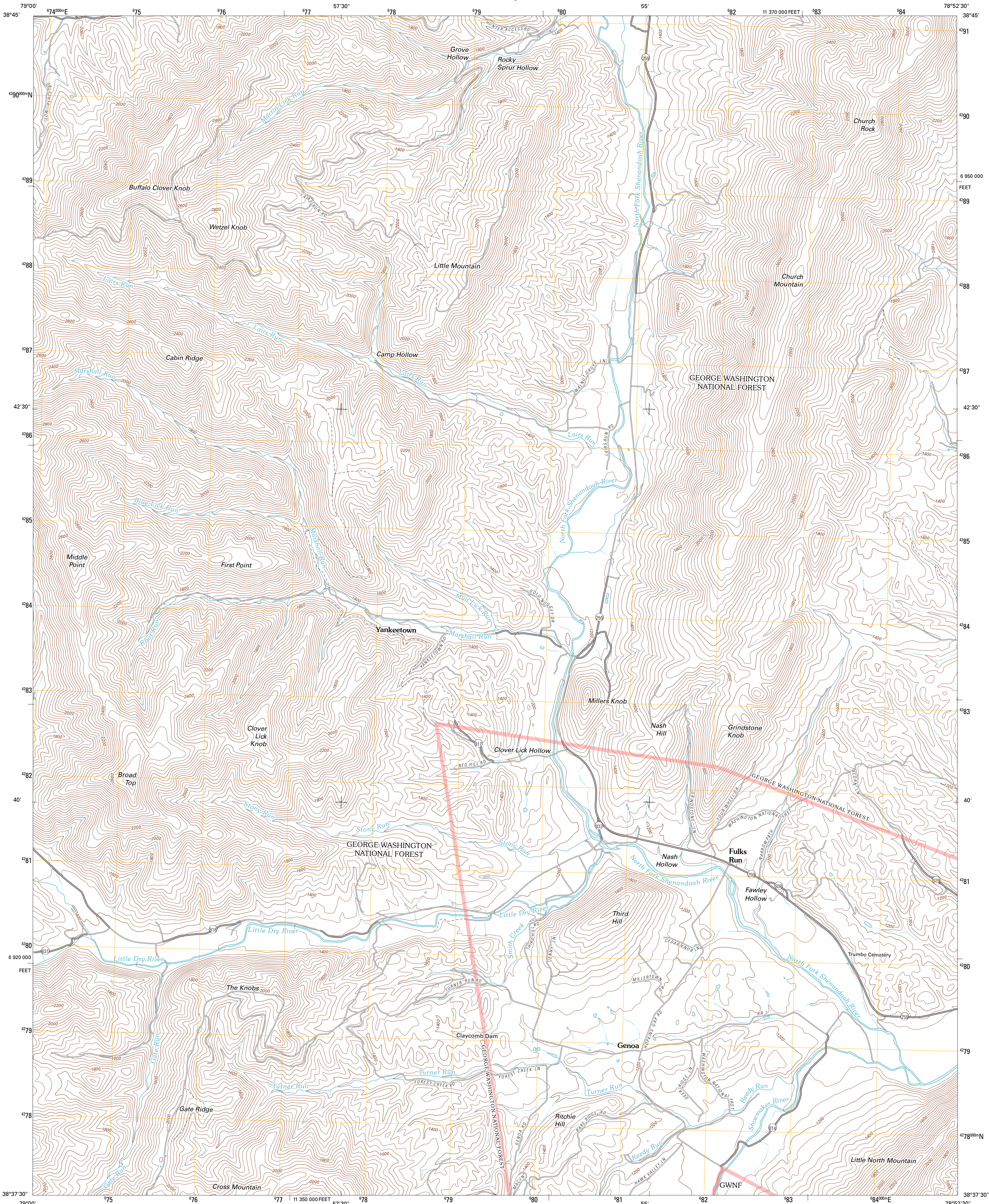




U.S. DEPARTMENT OF THE INTERIOR  
U. S. GEOLOGICAL SURVEY

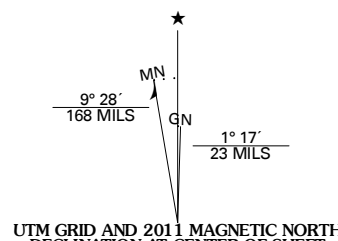


FULKS RUN QUADRANGLE  
VIRGINIA  
7.5-MINUTE SERIES

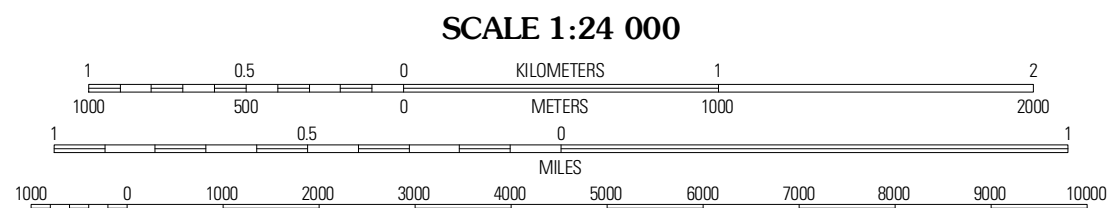


Produced by the United States Geological Survey  
North American Datum of 1983 (NAD83)  
World Geodetic System of 1984 (WGS84). Projection and  
1 000-meter grid: Universal Transverse Mercator, Zone 17S  
10 000-foot ticks: Virginia Coordinate System of 1983 (north  
zone)

Imagery.....NAIP, October 2009  
Roads.....©2006-2010 Tele Atlas  
Roads within US Forest Service Lands.....FS Topo Data  
with limited Forest Service updates, 2009  
Names.....GNIS, 2010  
Hydrography.....National Hydrography Dataset, 2009  
Contours.....National Elevation Dataset, 2002



U.S. National Grid 100,000-m Square ID
PC
Grid Zone Designation 17S



CONTOUR INTERVAL 40 FEET  
NORTH AMERICAN VERTICAL DATUM OF 1988  
This map was produced to conform with version 0.5.10 of the  
draft USGS Standards for 7.5-Minute Quadrangle Maps.  
A metadata file associated with this product is draft version 0.5.12



Milum	Bergton	Orkney Springs
Cow Knob	Fulks Run	Timberville
Rawley Springs	Singers Glen	Broadway

ADJOINING 7.5' QUADRANGLES

**ROAD CLASSIFICATION**

Interstate Route	State Route
US Route	Local Road
Ramp	4WD

Legend:  
Interstate Route (thick red line)  
US Route (red line)  
FS Primary Route (red line with cross-ticks)  
State Route (thin red line)  
FS Passenger Route (red line with cross-ticks)  
FS High Clearance Route (red line with cross-ticks)

Check with local Forest Service unit  
for current travel conditions and restrictions.

FULKS RUN, VA  
2011