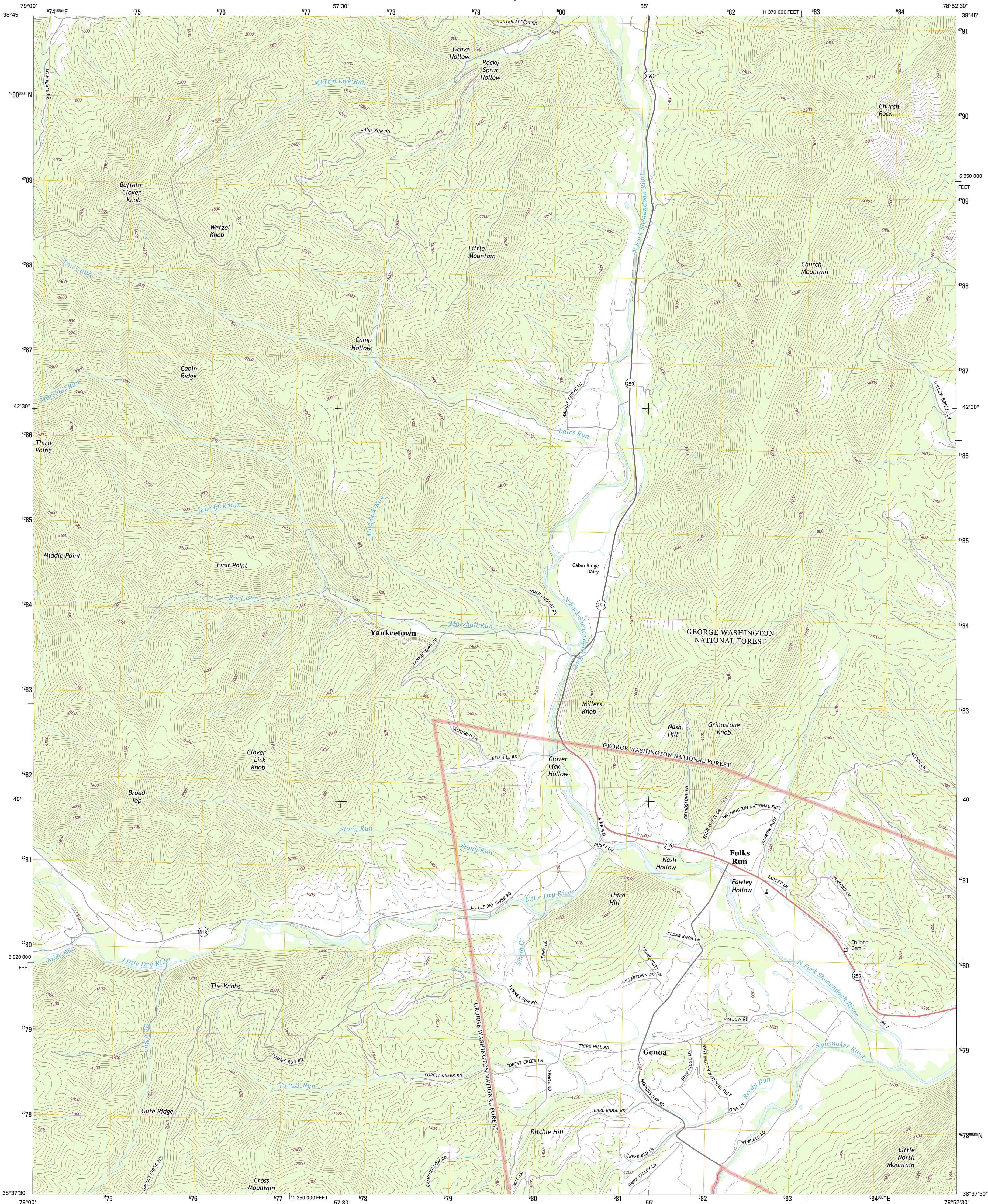




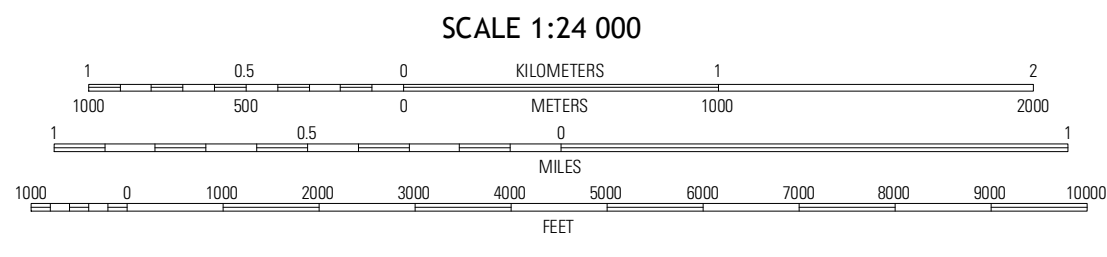
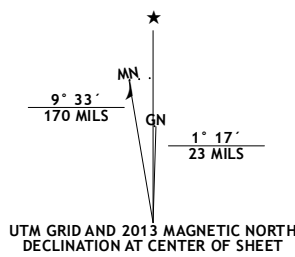
U.S. DEPARTMENT OF THE INTERIOR
U. S. GEOLOGICAL SURVEY



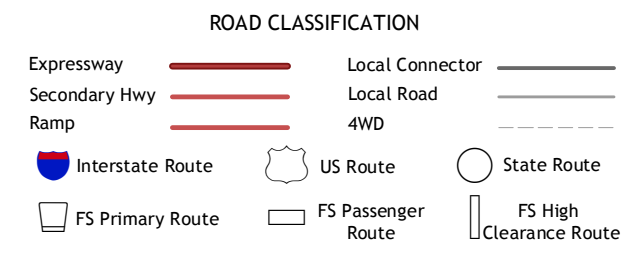
FULKS RUN QUADRANGLE
VIRGINIA-ROCKINGHAM CO.
7.5-MINUTE SERIES



Produced by the United States Geological Survey
North American Datum of 1983 (NAD83)
World Geodetic System of 1984 (WGS84). Projection and
1000-meter grid: Universal Transverse Mercator, Zone 17S
10 000-foot ticks: Virginia Coordinate System of 1983 (north
zone)



QUADRANGLE LOCATION		
Milam	Bergton	Orkney Springs
Cow Knob	Fulks Run	Timberville
Rawley Springs	Singers Glen	Broadway



Check with local Forest Service unit
for current travel conditions and restrictions.

FULKS RUN, VA
2013