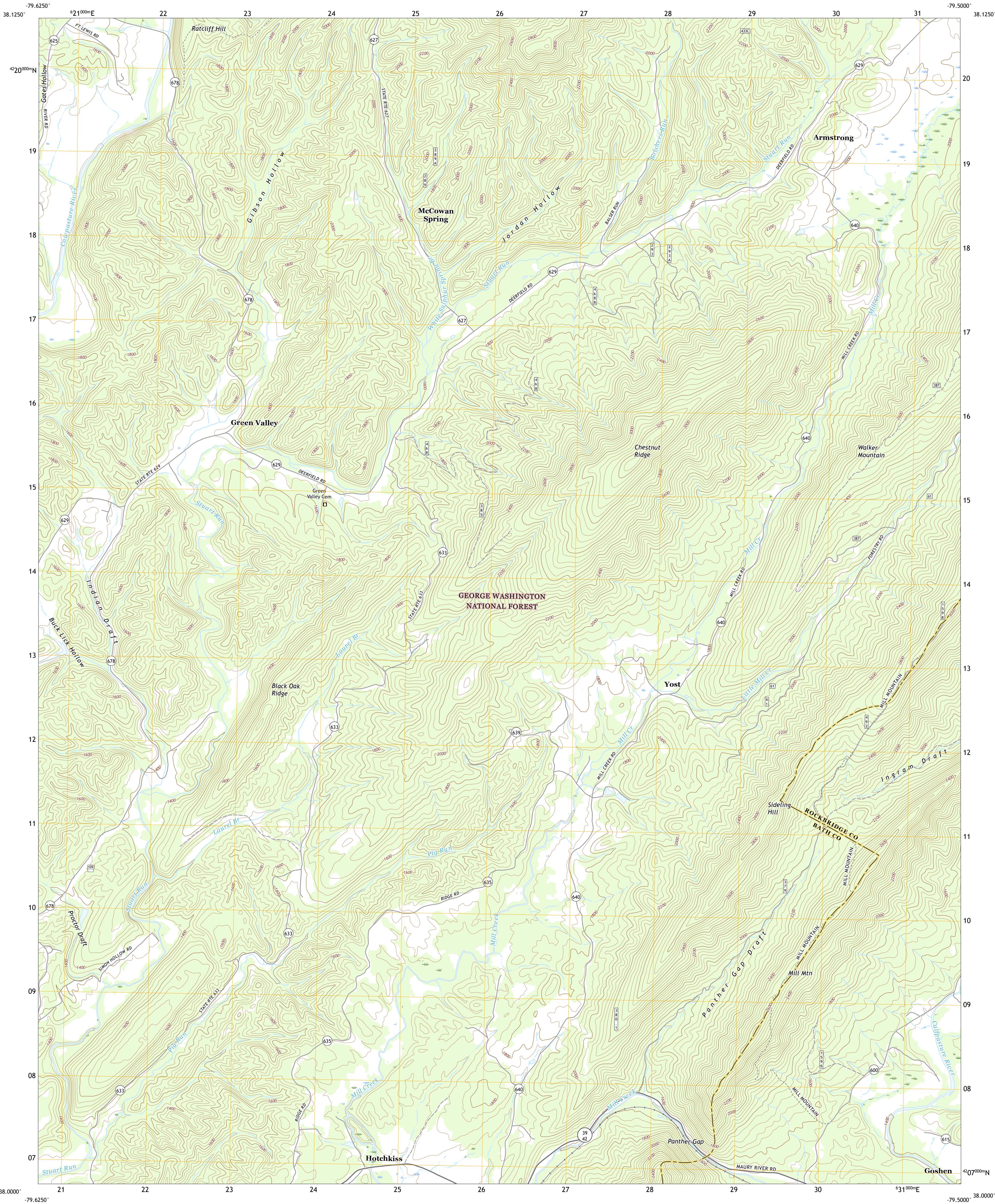




U.S. DEPARTMENT OF THE INTERIOR
U.S. GEOLOGICAL SURVEY

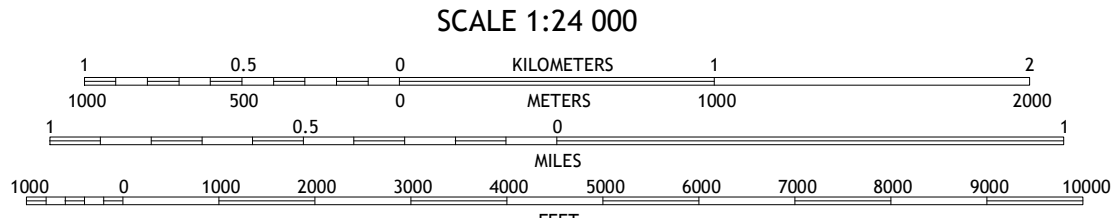
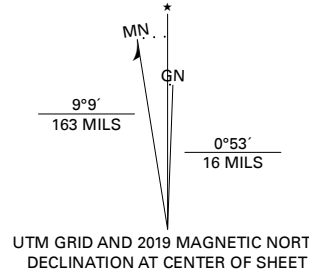


GREEN VALLEY QUADRANGLE
VIRGINIA
7.5-MINUTE SERIES

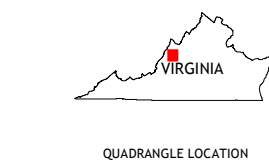


Produced by the United States Geological Survey
North American Datum of 1983 (NAD83)
World Geodetic System of 1984 (WGS84). Projection and
1 000-meter grid: Universal Transverse Mercator, Zone 17S
This map is not a legal document. Boundaries may be
generalized for this map scale. Private lands within government
reservations may not be shown. Obtain permission before
entering private lands.

Imagery.....N.A.P., April 2016 - July 2016
Roads.....U.S. Census Bureau, 2016
Roads within US Forest Service Lands.....FS Topo
Data with limited Forest Service updates, 2013
Names.....GNS, 1979 - 2016
Hydrography.....National Hydrography Dataset, 2001 - 2018
Contours.....National Elevation Dataset, 2002
Boundaries.....Multiple sources; see metadata file 2017 - 2018
Wetlands.....FWS National Wetlands Inventory 1981 - 1982



CONTOUR INTERVAL 40 FEET
NORTH AMERICAN VERTICAL DATUM OF 1988
This map was produced to conform with the
National Geospatial Program US Topo Product Standard, 2011.
A metadata file associated with this product is draft version 0.6.18



1	2	3	1 Burnsville
4		5	2 Williamsville
6	7	8	3 Deerfield
			4 Bath Alum
			5 Craigsville
			6 Nimrod Hall
			7 Millboro
			8 Goshen

ADJOINING QUADRANGLES

ROAD CLASSIFICATION	
Expressway	Local Connector
Secondary Hwy	Local Road
Ramp	4WD
Interstate Route	US Route
FS Primary Route	State Route
FS Passenger Route	FS High Clearance Route

Check with local Forest Service unit
for current travel conditions and restrictions.

GREEN VALLEY, VA
2019

