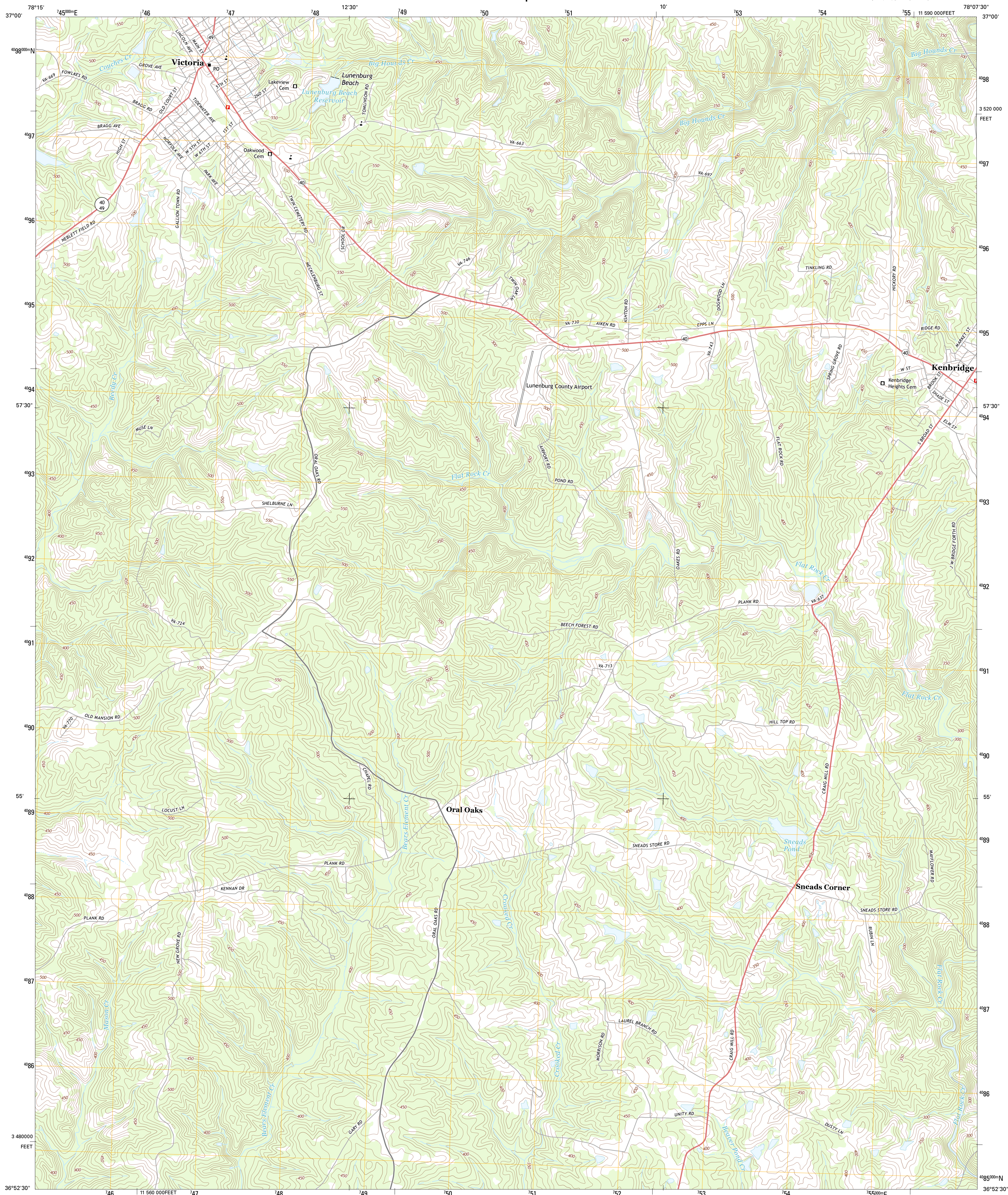




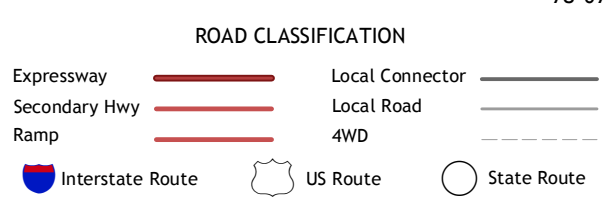
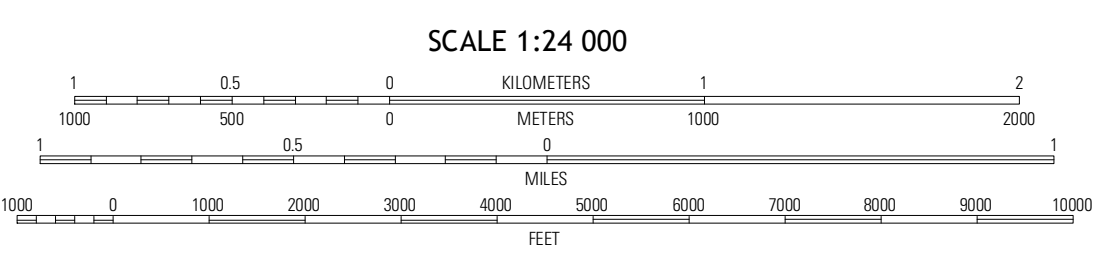
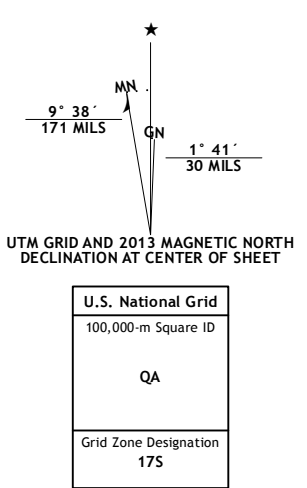
U.S. DEPARTMENT OF THE INTERIOR
U. S. GEOLOGICAL SURVEY



KENBRIDGE WEST QUADRANGLE
VIRGINIA-LUNENBURG CO.
7.5-MINUTE SERIES



Produced by the United States Geological Survey
North American Datum of 1983 (NAD83)
World Geodetic System of 1984 (WGS84), Projection and
1 000-meter grid; Universal Transverse Mercator, Zone 17S
10 000-foot ticks; Virginia Coordinate System of 1983 (south zone)



QUADRANGLE LOCATION

Meherin	Rubemont	Blackston
Lunenburg	Kenbridge West	Kenbridge East
Wightman	North View	Forkville

This map was produced to conform with the National Geospatial Program US Topo Product Standard, 2011. A metadata file associated with this product is draft version 0.6.11

KENBRIDGE WEST, VA
2013

ADJOINING 7.5 QUADRANGLES