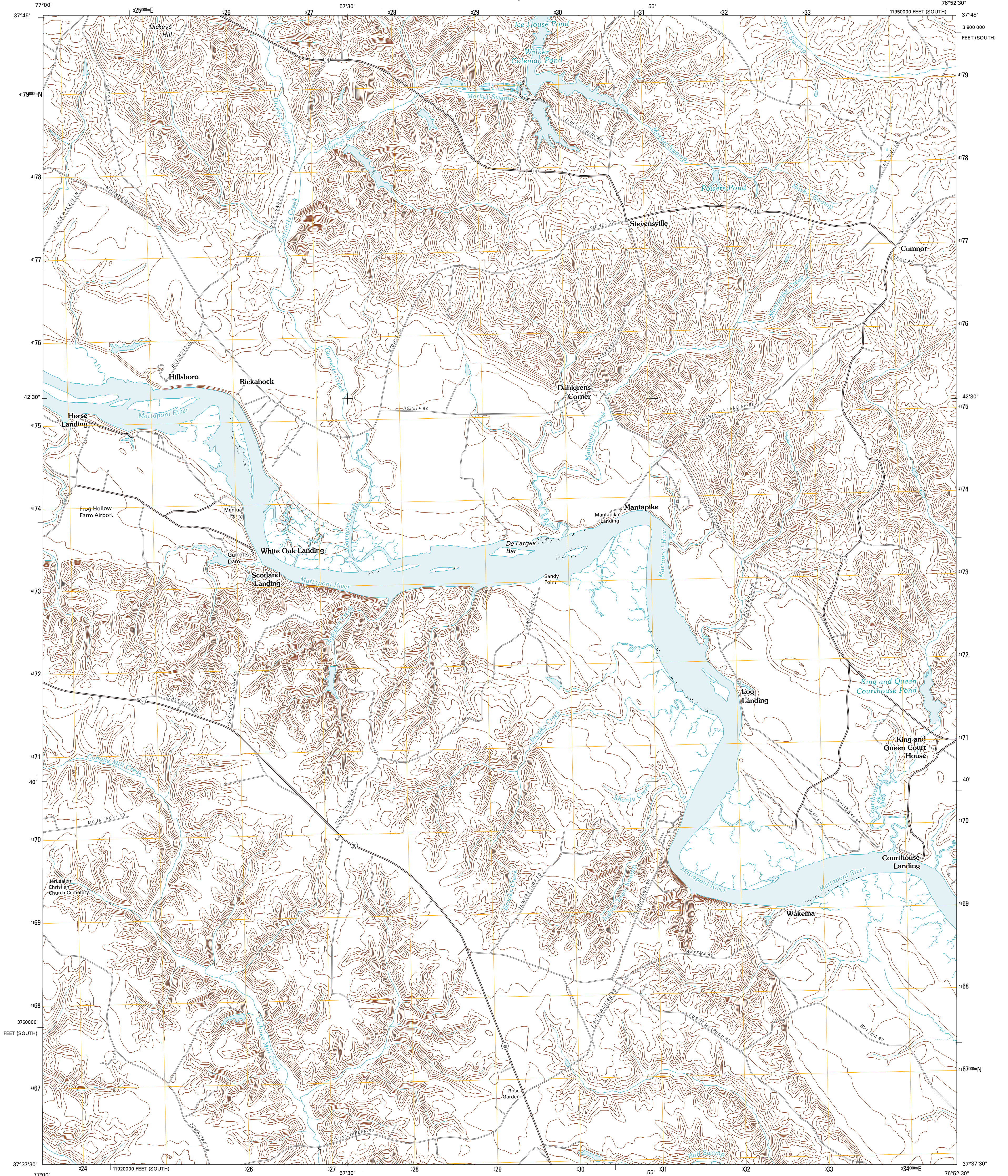




U.S. DEPARTMENT OF THE INTERIOR
U. S. GEOLOGICAL SURVEY

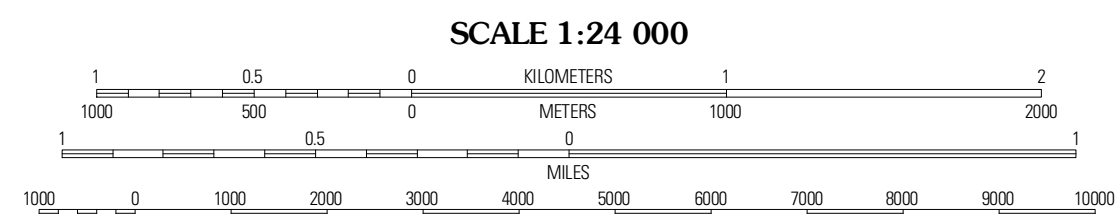
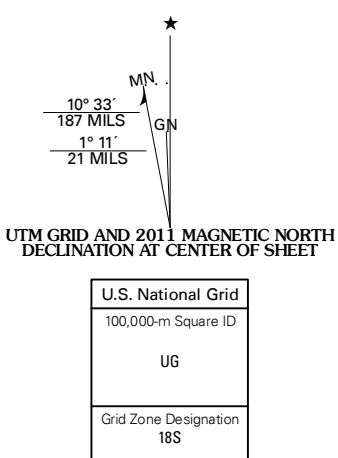


KING AND QUEEN COURT HOUSE QUADRANGLE
VIRGINIA
7.5-MINUTE SERIES



Produced by the United States Geological Survey
North American Datum of 1983 (NAD83)
Roads: ©2006-2010 File Atlas
Projection and
1 000-meter grid: Universal Transverse Mercator, Zone 18S
10 000-foot ticks: Virginia Coordinate System of 1983 (south zone)

Imagery: N/AIP, June 2009
Roads: ©2006-2010 File Atlas
Names: ©2006-2010 File Atlas
Hydrography: National Hydrography Dataset, 2009
Contours: National Elevation Dataset, 1998



CONTOUR INTERVAL 10 FEET
NORTH AMERICAN VERTICAL DATUM OF 1988
This map was produced to conform with version 0.5.10 of the draft USGS Standards for 7.5-Minute Quadrangle Maps. A metadata file associated with this product is draft version 0.5.11



Aylett	Millers Tavern	Dunnsville
King William	King And Queen Court House	Truhart
Tambling	New Kent	West Point

ADJOINING 7.5 QUADRANGLES

ROAD CLASSIFICATION

Interstate Route
US Route
Ramp

State Route
Local Road
4WD

KING AND QUEEN COURT HOUSE, VA
2011