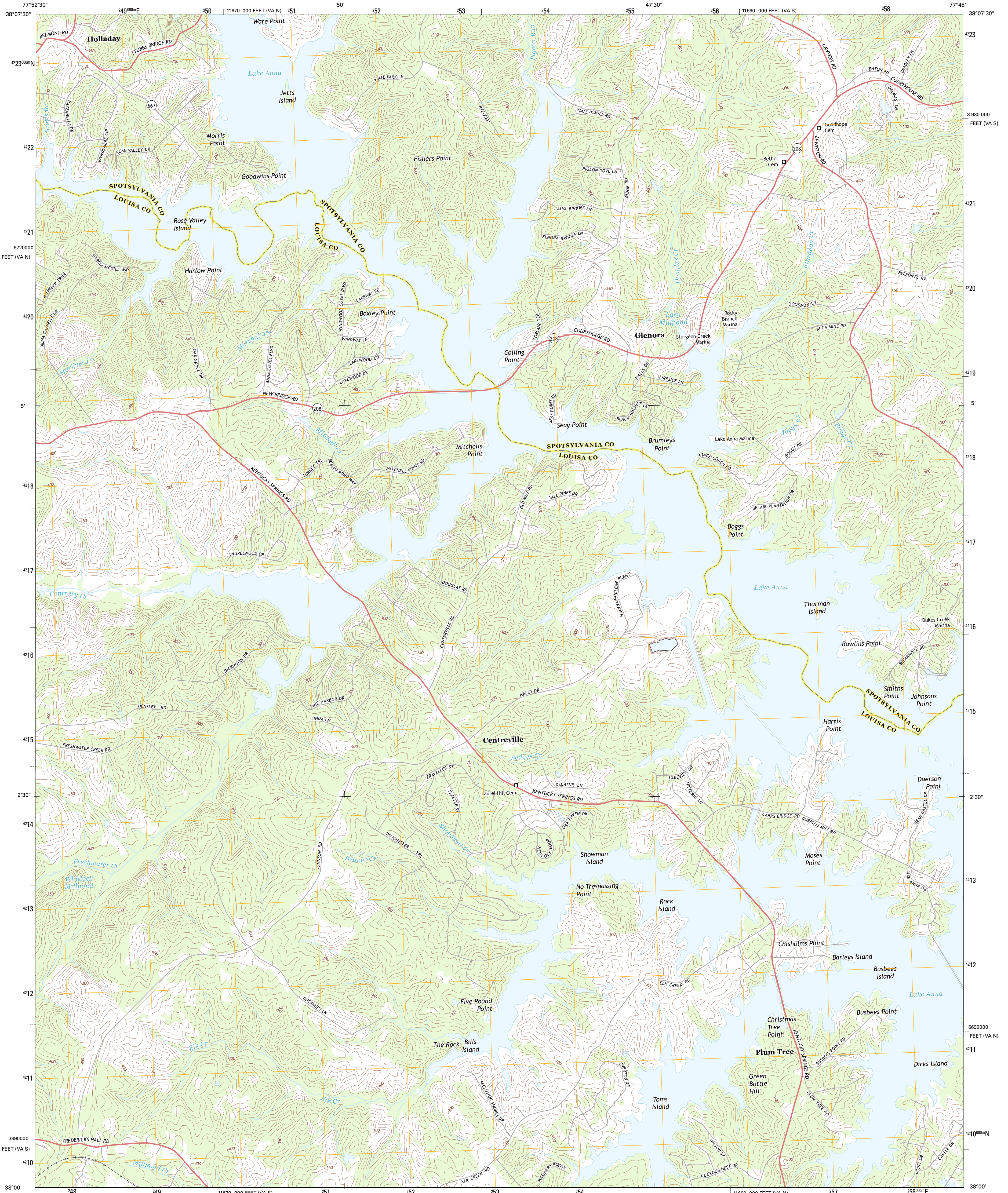




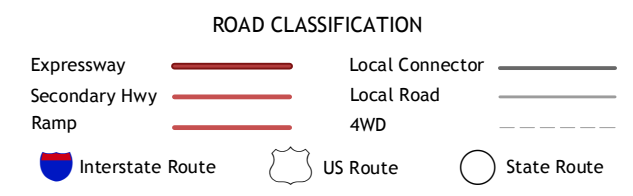
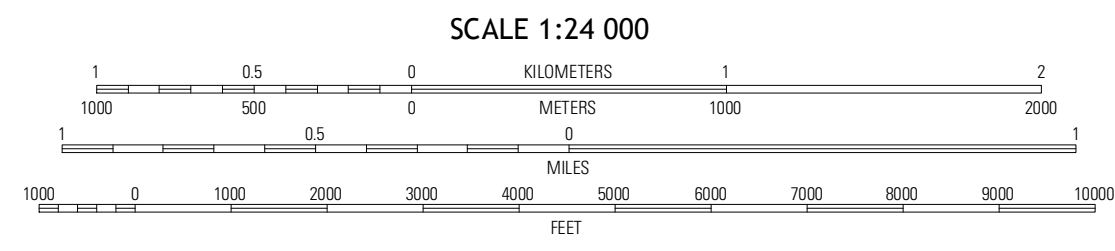
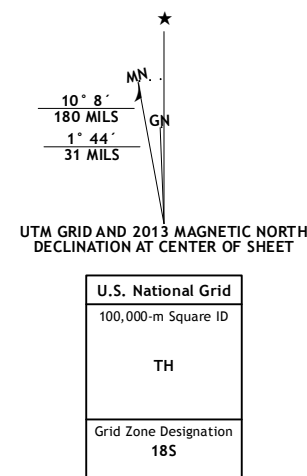
U.S. DEPARTMENT OF THE INTERIOR
U. S. GEOLOGICAL SURVEY



LAKE ANNA WEST QUADRANGLE
VIRGINIA
7.5-MINUTE SERIES



Produced by the United States Geological Survey
North American Datum of 1983 (NAD83)
World Geodetic System of 1984 (WGS84). Projection and
1 000-meter grid: Universal Transverse Mercator, Zone 18S
10 000-foot ticks: Virginia Coordinate System of 1983 (south and
north zones)



QUADRANGLE LOCATION

Labore	Belmont	Brokensburg
Mineral	Lake Anna West	Lake Anna East
Pemberton	Buckner	Boverdam

Imagery.....NAIP, May 2012
Roads.....©2006-2012 TomTom
Names.....GNSS, 2013
Hydrography.....National Hydrography Dataset, 2012
Contours.....National Elevation Dataset, 2000
Boundaries.....Census, IBWC, IBC, USGS, 1972 - 2012

CONTOUR INTERVAL 10 FEET
NORTH AMERICAN VERTICAL DATUM OF 1988
This map was produced to conform with the
National Geospatial Program US Topo Product Standard, 2011.
A metadata file associated with this product is draft version 0.6.11

LAKE ANNA WEST, VA
2013

ADJOINING 7.5 QUADRANGLES