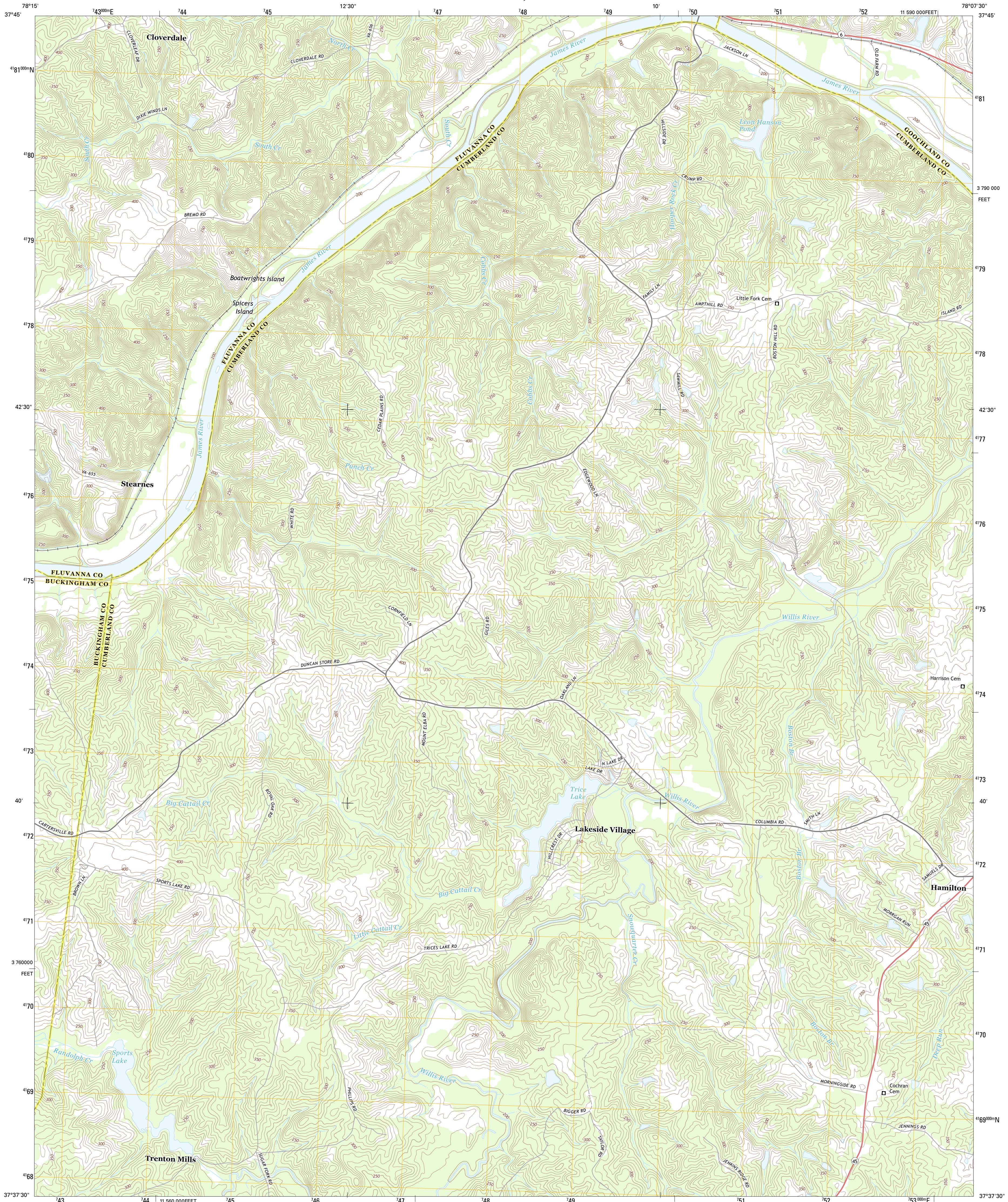




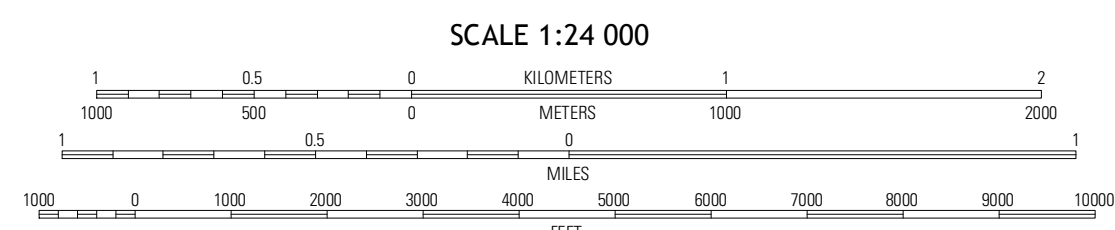
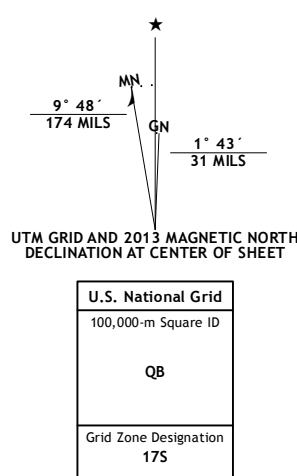
U.S. DEPARTMENT OF THE INTERIOR
U. S. GEOLOGICAL SURVEY



LAKESIDE VILLAGE QUADRANGLE
VIRGINIA
7.5-MINUTE SERIES

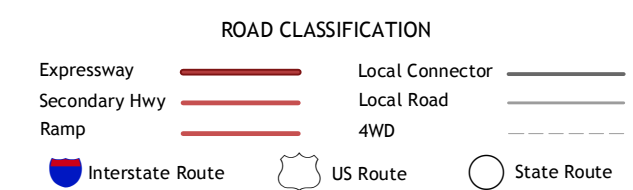


Produced by the United States Geological Survey
North American Datum of 1983 (NAD83)
World Geodetic System of 1984 (WGS84), Projection and
1 000-meter grid: Universal Transverse Mercator, Zone 17S
10 000-foot ticks: Virginia Coordinate System of 1983 (south
zone)



QUADRANGLE LOCATION

Palmyra	Columbia	Caledonia
Arvon	Lakeside Village	Cartersville
Gold Hill	Whiteville	Trenholm



Imagery.....NAIP, May 2012
Roads.....©2006-2012, TomTom
Names.....GNS, 2013
Hydrography.....National Hydrography Dataset, 2012
Contours.....National Elevation Dataset, 2008
Boundaries.....Census, IBWC, IBC, USGS, 1972 - 2012

CONTOUR INTERVAL 10 FEET
NORTH AMERICAN VERTICAL DATUM OF 1988

This map was produced to conform with the
National Geospatial Program US Topo Product Standard, 2011.
A metadata file associated with this product is draft version 0.6.11

LAKESIDE VILLAGE, VA
2013

ADJOINING 7.5 QUADRANGLES