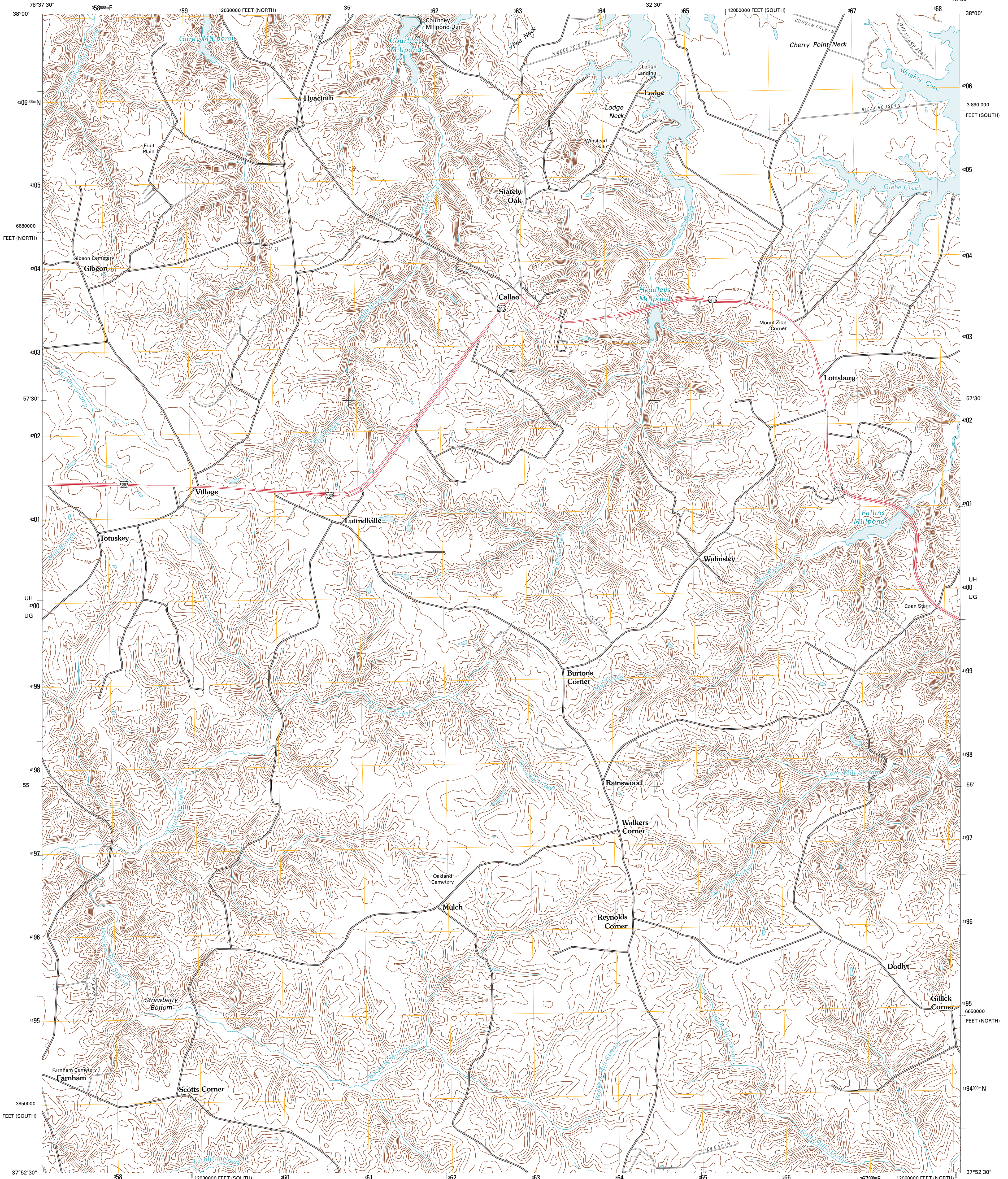




U.S. DEPARTMENT OF THE INTERIOR
U. S. GEOLOGICAL SURVEY

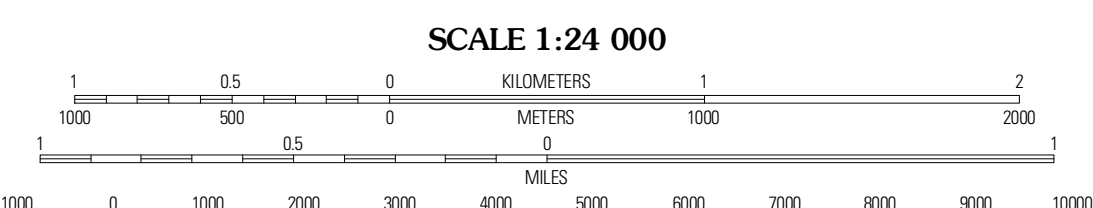
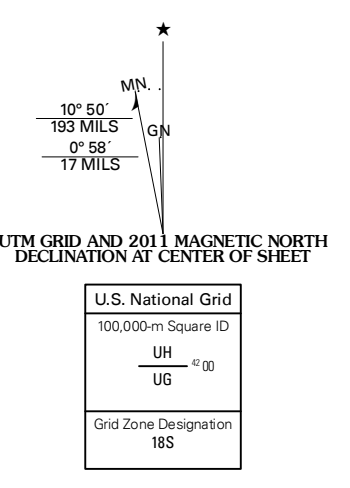


LOTTSBURG QUADRANGLE
VIRGINIA
7.5-MINUTE SERIES



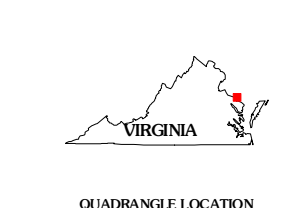
Produced by the United States Geological Survey
North American Datum of 1983 (NAD83)
World Geospatial System of 1984 (WGS84). Projection and
1 000-foot ticks: Virginia Coordinate System of 1983 (south
and north zones)

Imagery.....NAIP, July 2009 - August 2009
Roads.....©2006-2010 Tele Atlas
Names.....GNIS, 2010
Hydrography.....National Hydrography Dataset, 2009
Contours.....National Elevation Dataset, 1999



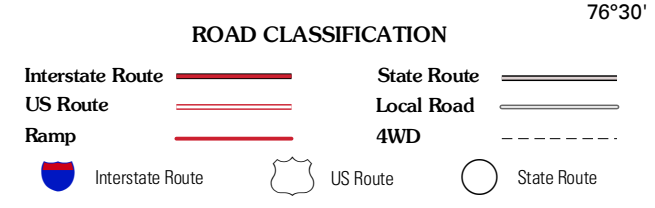
CONTOUR INTERVAL 10 FEET
NORTH AMERICAN DATUM OF 1988

This map was produced to conform with version 0.5.10 of the
draft USGS Standards for 7.5-Minute Quadrangle Maps.
A metadata file associated with this product is draft version 0.5.11



Machodoc	Rinsale	Saint George Island
Haynesville	Lottsburg	Heathsville
Moratico	Lively	Lancaster

ADJOINING 7.5 QUADRANGLES



LOTTSBURG, VA
2011