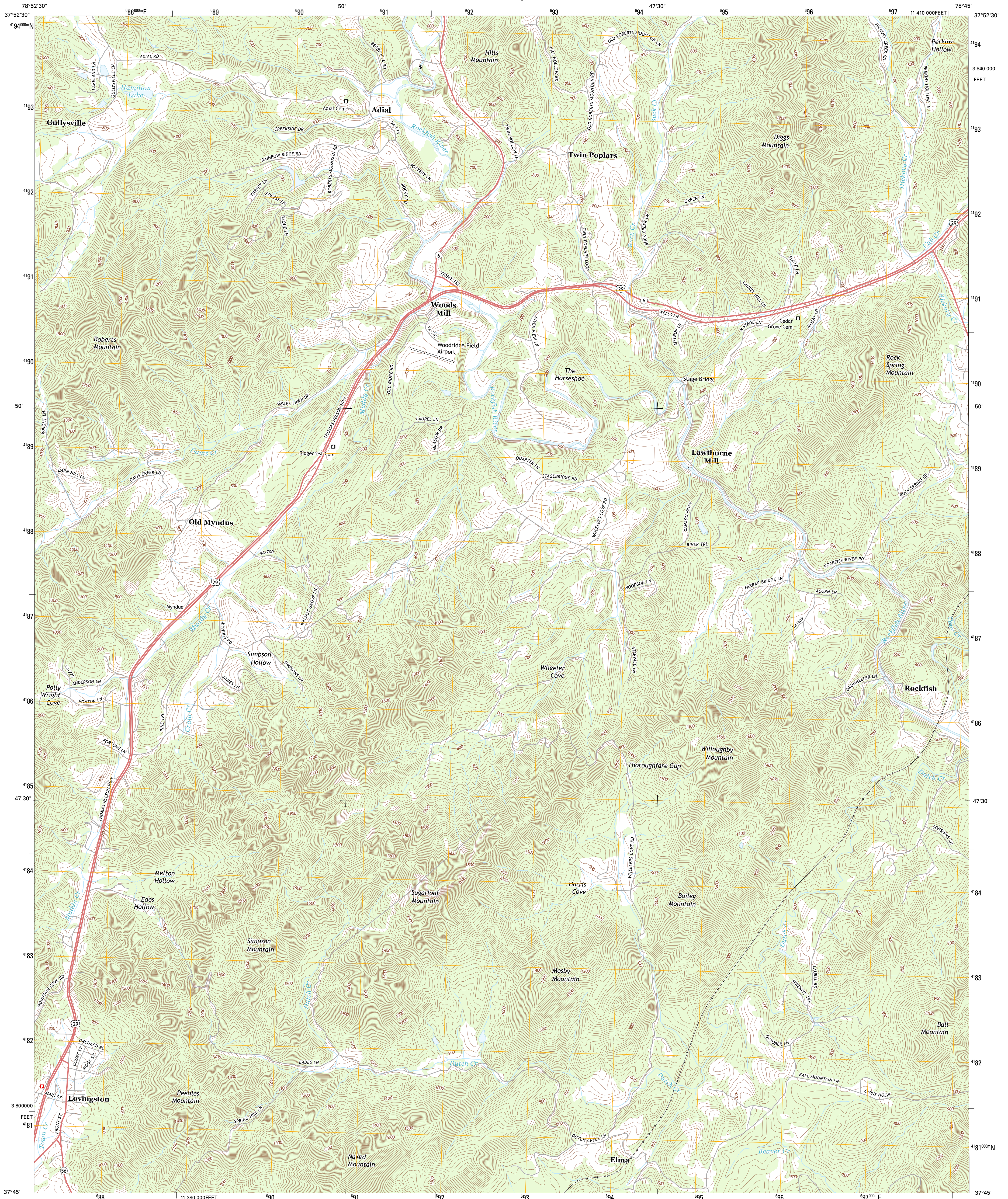




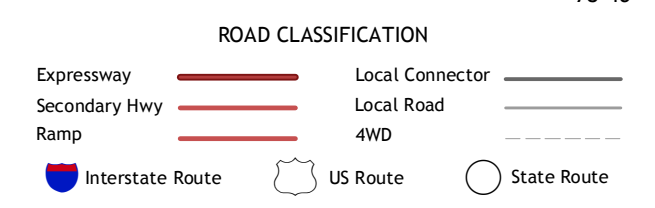
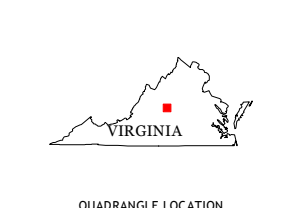
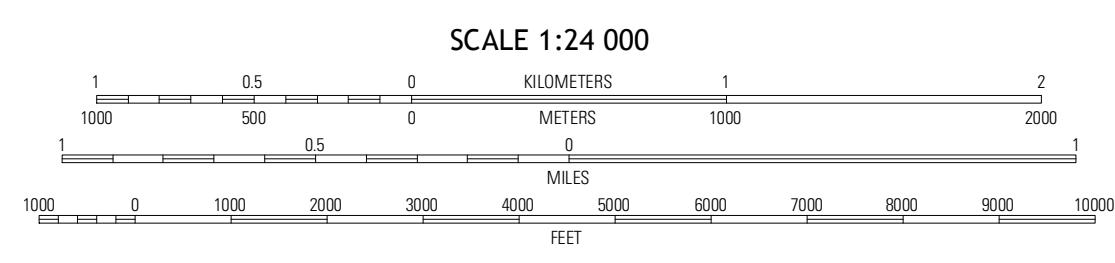
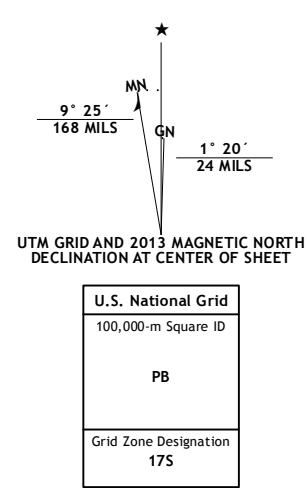
U.S. DEPARTMENT OF THE INTERIOR
U. S. GEOLOGICAL SURVEY



LOVINGSTON QUADRANGLE
VIRGINIA-NELSON CO.
7.5-MINUTE SERIES



Produced by the United States Geological Survey
North American Datum of 1983 (NAD83)
World Geodetic System of 1984 (WGS84)
1:000-meter grid: Universal Transverse Mercator, Zone 17S
10 000-foot ticks: Virginia Coordinate System of 1983 (south zone)



QUADRANGLE LOCATION

Sherando	Greenfield	Covesville
Horseshoe Mountain	Lovington	Schuyler
Arrington	Shipman	Howardsville

Imagery.....NAIP, May 2012
Roads.....©2006-2012, TomTom
Names.....©2013, GNS, 2013
Hydrography.....National Hydrography Dataset, 2012
Contours.....National Elevation Dataset, 1999
Boundaries.....Census, IBW, IBC, USGS, 1972-2012

CONTOUR INTERVAL 20 FEET
NORTH AMERICAN VERTICAL DATUM OF 1988
This map was produced to conform with the National Geospatial Program US Topo Product Standard, 2011. A metadata file associated with this product is draft version 0.6.11

LOVINGSTON, VA
2013

ADJOINING 7.5 QUADRANGLES