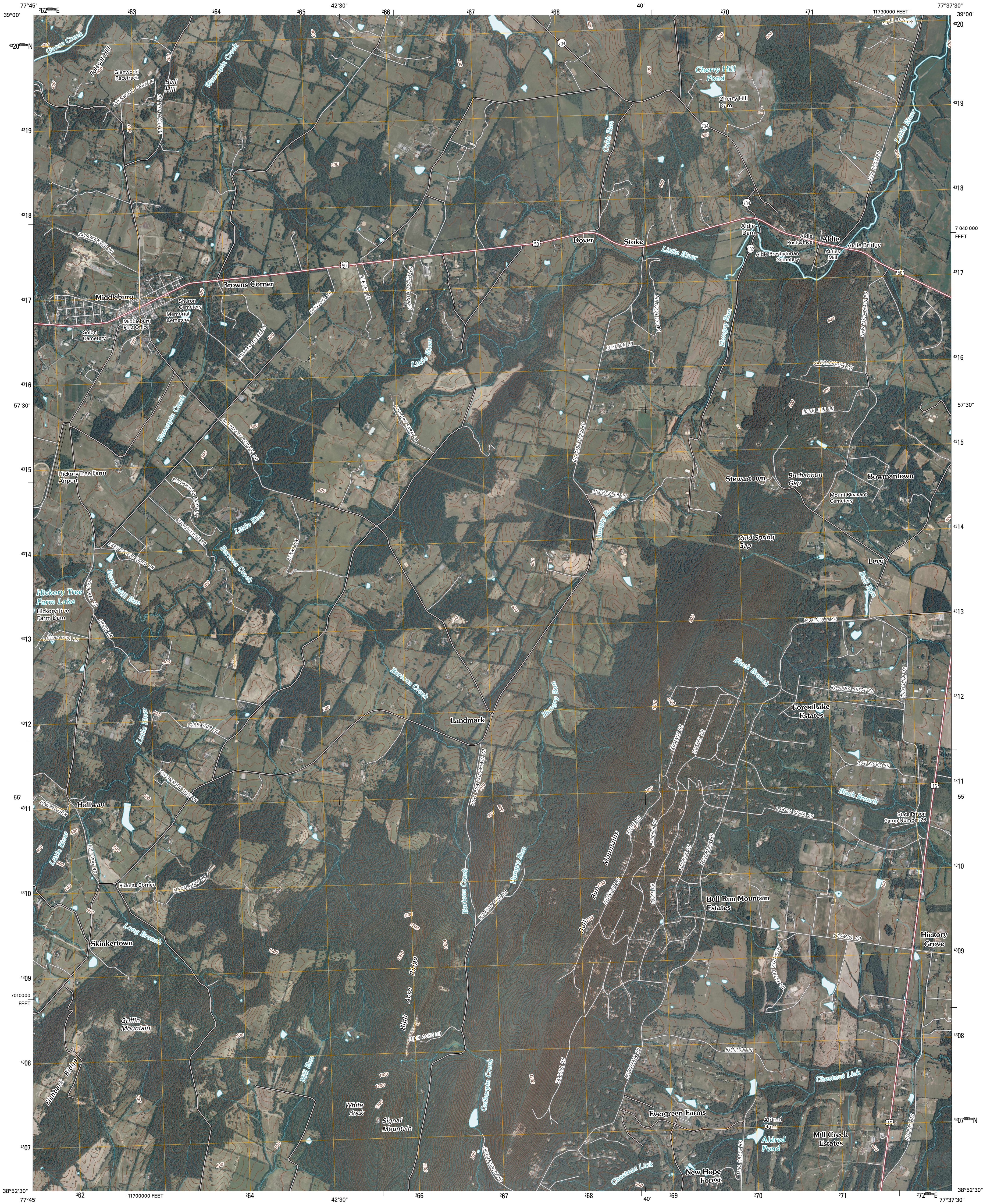




U.S. DEPARTMENT OF THE INTERIOR
U. S. GEOLOGICAL SURVEY

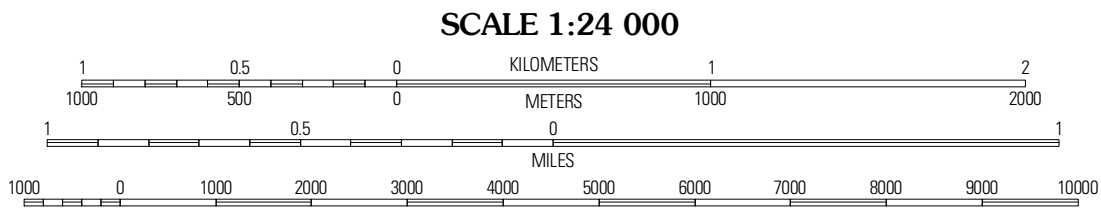
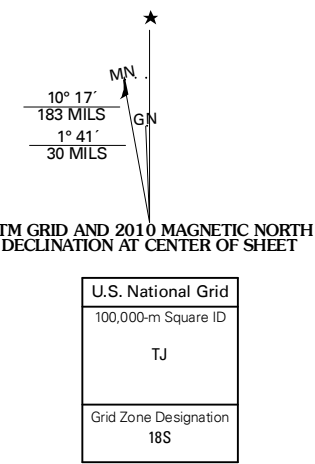


MIDDLEBURG QUADRANGLE
VIRGINIA
7.5-MINUTE SERIES



Produced by the United States Geological Survey
North American Datum of 1983 (NAD83)
World Geodetic System of 1984 (WGS84), Projection and
1 000-meter grid: Universal Transverse Mercator, Zone 18S
10 000-foot ticks: Virginia Coordinate System of 1983
(north zone)

Imagery.....NAIP, August 2009
Roads.....©2006-2010 Tele Atlas
Names.....GNIS, 2008
Hydrography.....National Hydrography Dataset, 2009
Contours.....National Elevation Dataset, 2007



CONTOUR INTERVAL 20 FEET
NORTH AMERICAN VERTICAL DATUM OF 1988

This map was produced to conform with version 0.5.10 of the
draft USGS Standards for 7.5-Minute Quadrangle Maps.
A metadata file associated with this product is draft version 0.5.11



QUADRANGLE LOCATION		
Bluemont	Lincol	Leesburg
Rectortown	Middleburg	Arcola
Marshall	Thoroughfare Gap	Gainessville

ADJOINING 7.5 QUADRANGLES

ROAD CLASSIFICATION		
Interstate Route	State Route	Local Road
US Route	State Route	Local Road
Ramp	State Route	Local Road
Interstate Route	US Route	State Route

MIDDLEBURG, VA
2010