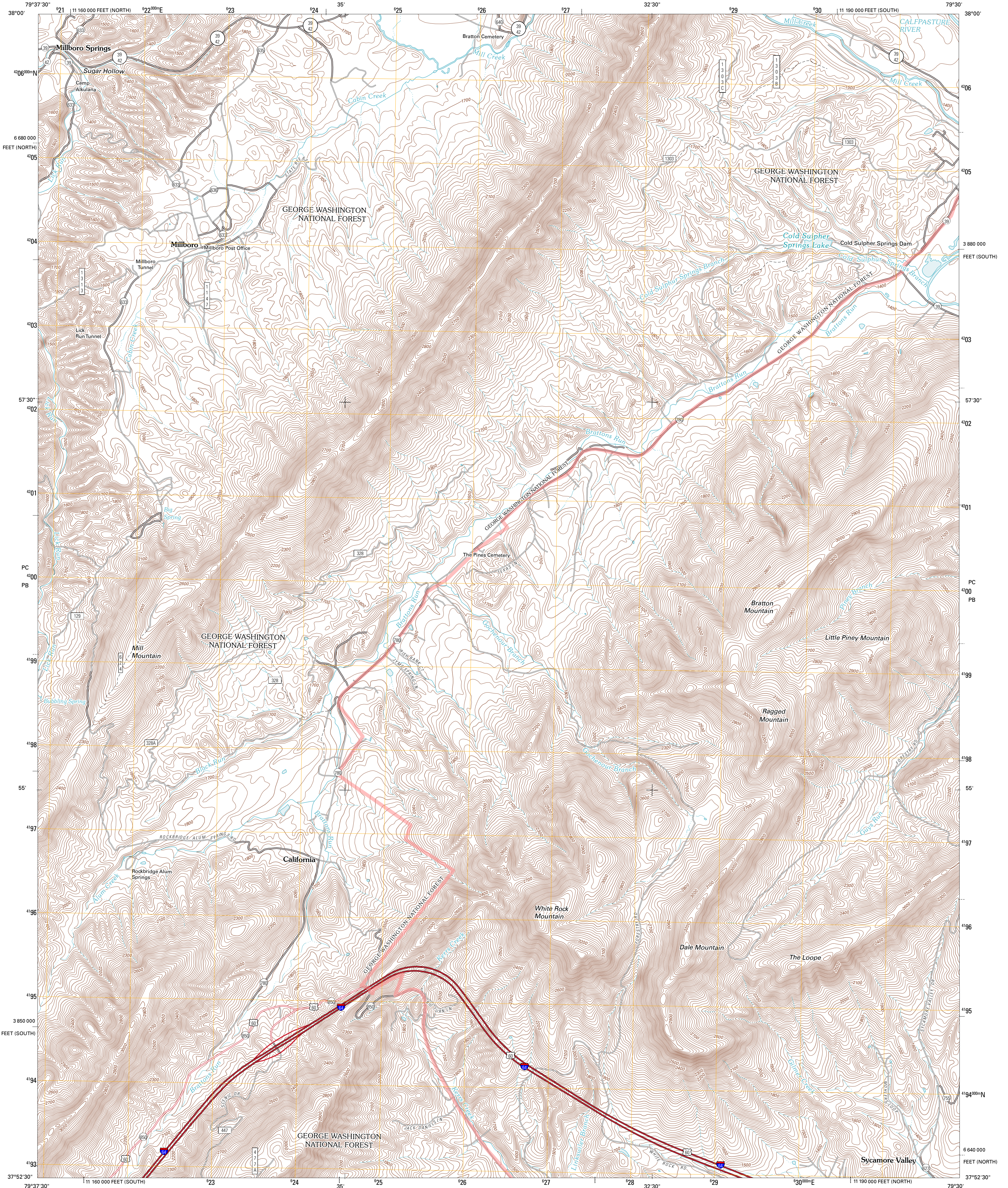




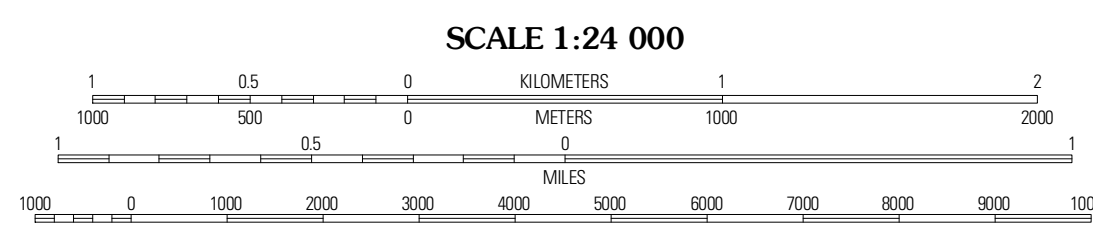
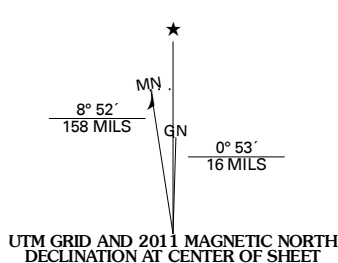
U.S. DEPARTMENT OF THE INTERIOR
U. S. GEOLOGICAL SURVEY



MILLBORO QUADRANGLE
VIRGINIA
7.5-MINUTE SERIES



Produced by the United States Geological Survey
North American Datum of 1983 (NAD83)
World Geodetic System of 1984 (WGS84). Projection and
1 000-meter grid: Universal Transverse Mercator, Zone 17S
10 000-foot ticks: Virginia Coordinate System of 1983 (south
and north zones)



CONTOUR INTERVAL 40 FEET
NORTH AMERICAN VERTICAL DATUM OF 1988
This map was produced to conform with version 0.5.10 of the
draft USGS Standards for 7.5-Minute Quadrangle Maps.
A metadata file associated with this product is draft version 0.5.12



QUADRANGLE LOCATION

Both Alam	Green Valley	Craigsville
Nimrod Hall	Millboro	Goshen
Longdale Furnace	Collinstown	Lexington

ADJOINING 7.5 QUADRANGLES

ROAD CLASSIFICATION

Interstate Route	State Route
US Route	Local Road
Ramp	4WD
FS Primary Route	FS Passenger Route
FS High Clearance Route	

Check with local Forest Service unit for current travel conditions and restrictions.

Imagery: N.A.I.P. July 2009 - September 2009
Roads: 2006-2010 Tele Atlas
Roads within US Forest Service Lands: FSTopo Data with limited Forest Service updates, 2009
Names: C.N.S., 2010
Hydrography: National Hydrography Dataset, 2009
Contours: National Elevation Dataset, 2002

U.S. National Grid

100,000-m Square ID	PC	100
Grid Zone Designation	PB	17S

MILLBORO, VA
2011