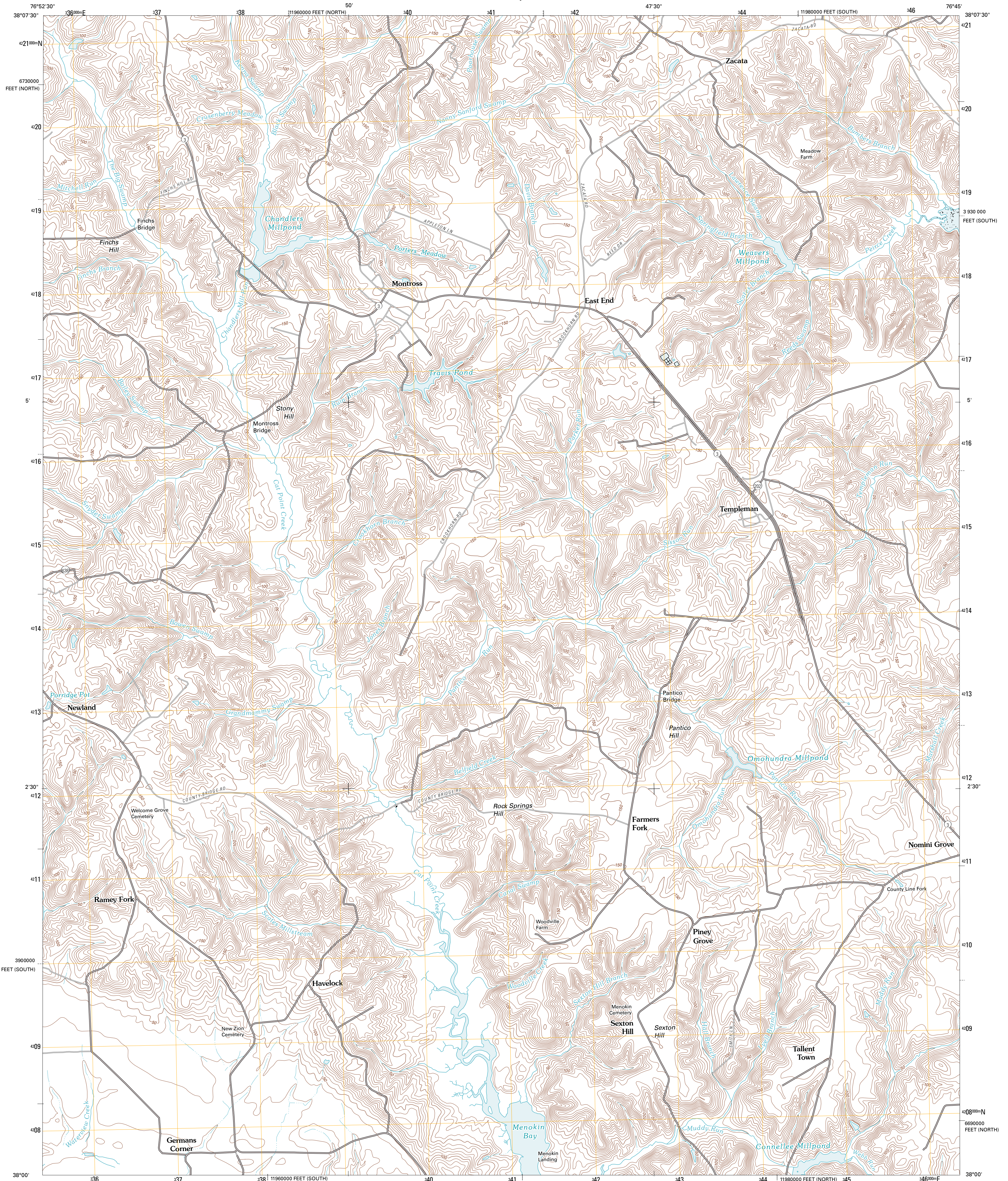




U.S. DEPARTMENT OF THE INTERIOR  
U. S. GEOLOGICAL SURVEY

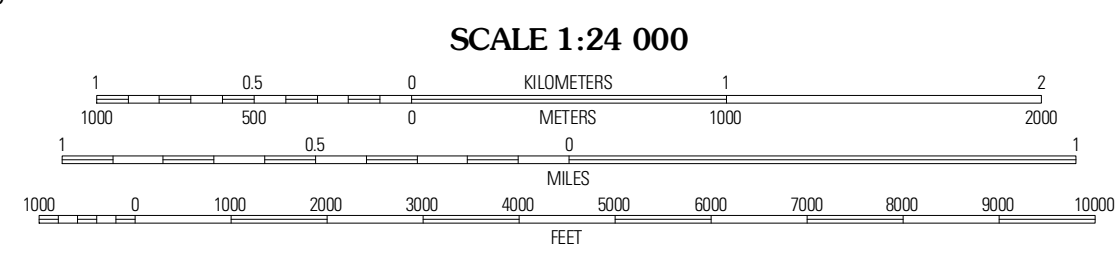
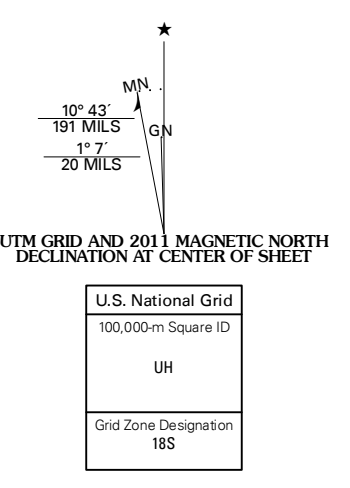


MONTROSS QUADRANGLE  
VIRGINIA  
7.5-MINUTE SERIES



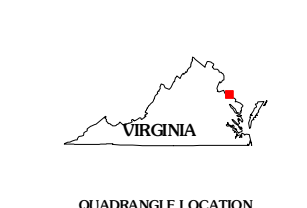
Produced by the United States Geological Survey  
North American Datum of 1983 (NAD83)  
World Geodetic System of 1984 (WGS84) Projection and  
1 000-meter grid; Universal Transverse Mercator, Zone 18S  
10 000-foot ticks; Virginia Coordinate System of 1983 (south  
and north zones)

Imagery.....NAIP, June 2009  
Roads.....©2006-2010 Tele Atlas  
Names.....©2006-2010 GNS, 2010  
Hydrography.....National Hydrography Dataset, 2009  
Contours.....National Elevation Dataset, 1999



CONTOUR INTERVAL 10 FEET  
NORTH AMERICAN VERTICAL DATUM OF 1988

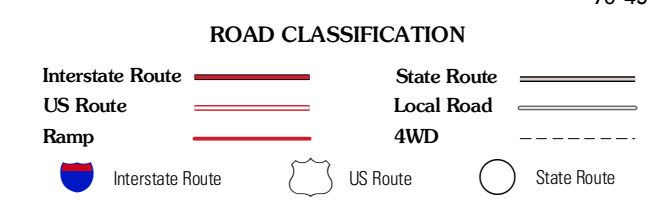
This map was produced to conform with version 0.5.10 of the  
draft USGS Standards for 7.5-Minute Quadrangle Maps.  
A metadata file associated with this product is draft version 0.5.11



QUADRANGLE LOCATION

Colonial Beach South	Stratford Hill	Saint James Island
Champlin	Montross	Machodoc
Mount Landing	Ippahamock	Haynesville

ADJOINING 7.5 QUADRANGLES



MONTROSS, VA  
2011