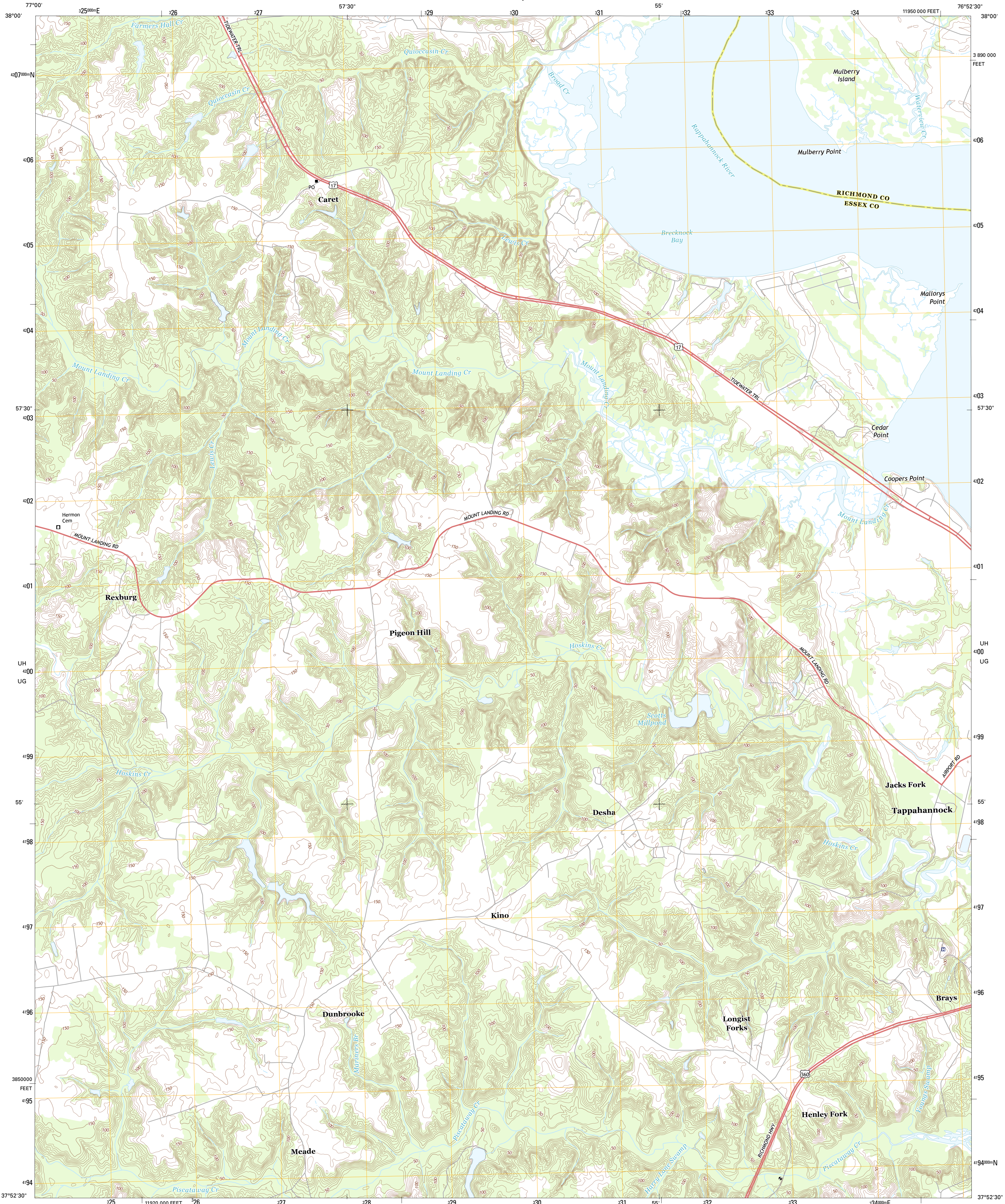




U.S. DEPARTMENT OF THE INTERIOR
U. S. GEOLOGICAL SURVEY

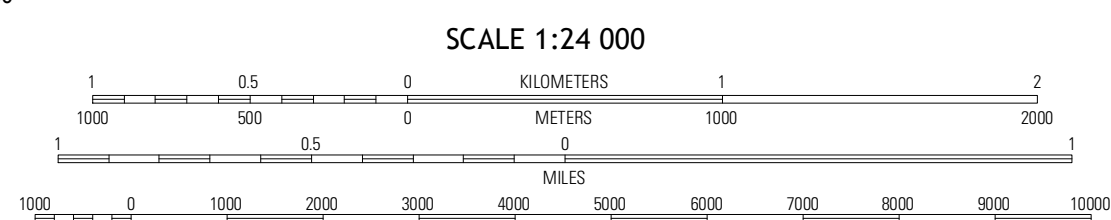
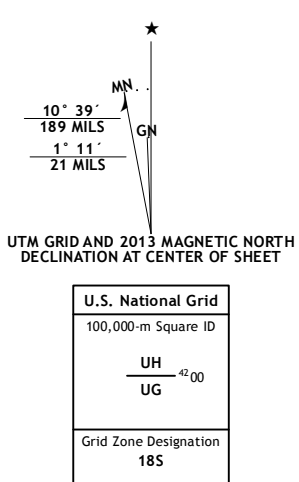


MOUNT LANDING QUADRANGLE
VIRGINIA
7.5-MINUTE SERIES



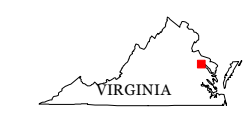
Produced by the United States Geological Survey
North American Datum of 1983 (NAD83)
World Geodetic System of 1984 (WGS84)
Projection and 1 000-meter grid: Universal Transverse Mercator, Zone 18S
10 000-foot ticks: Virginia Coordinate System of 1983 (south zone)

Imagery: NIP, May 2012
Roads: ©2006-2012 TomTom
Names: GNIS, 2013
Hydrography: National Hydrography Dataset, 2012
Contours: National Elevation Dataset, 2012
Boundaries: Census, IBC, USGS, 1972 - 2012



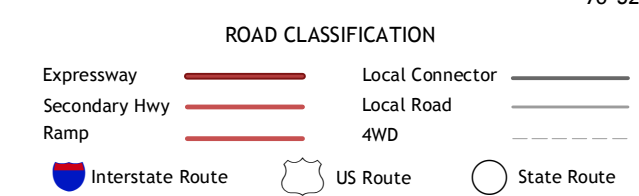
CONTOUR INTERVAL 10 FEET
NORTH AMERICAN VERTICAL DATUM OF 1988

This map was produced to conform with the National Geospatial Program US Topo Product Standard, 2011. A metadata file associated with this product is draft version 0.6.11



QUADRANGLE LOCATION

Loretto	Champlin	Montross
Caithersville	Mount Landing	Tappahannock
Aylett	Milners Tavern	Dummysville



MOUNT LANDING, VA
2013

ADJOINING 7.5 QUADRANGLES