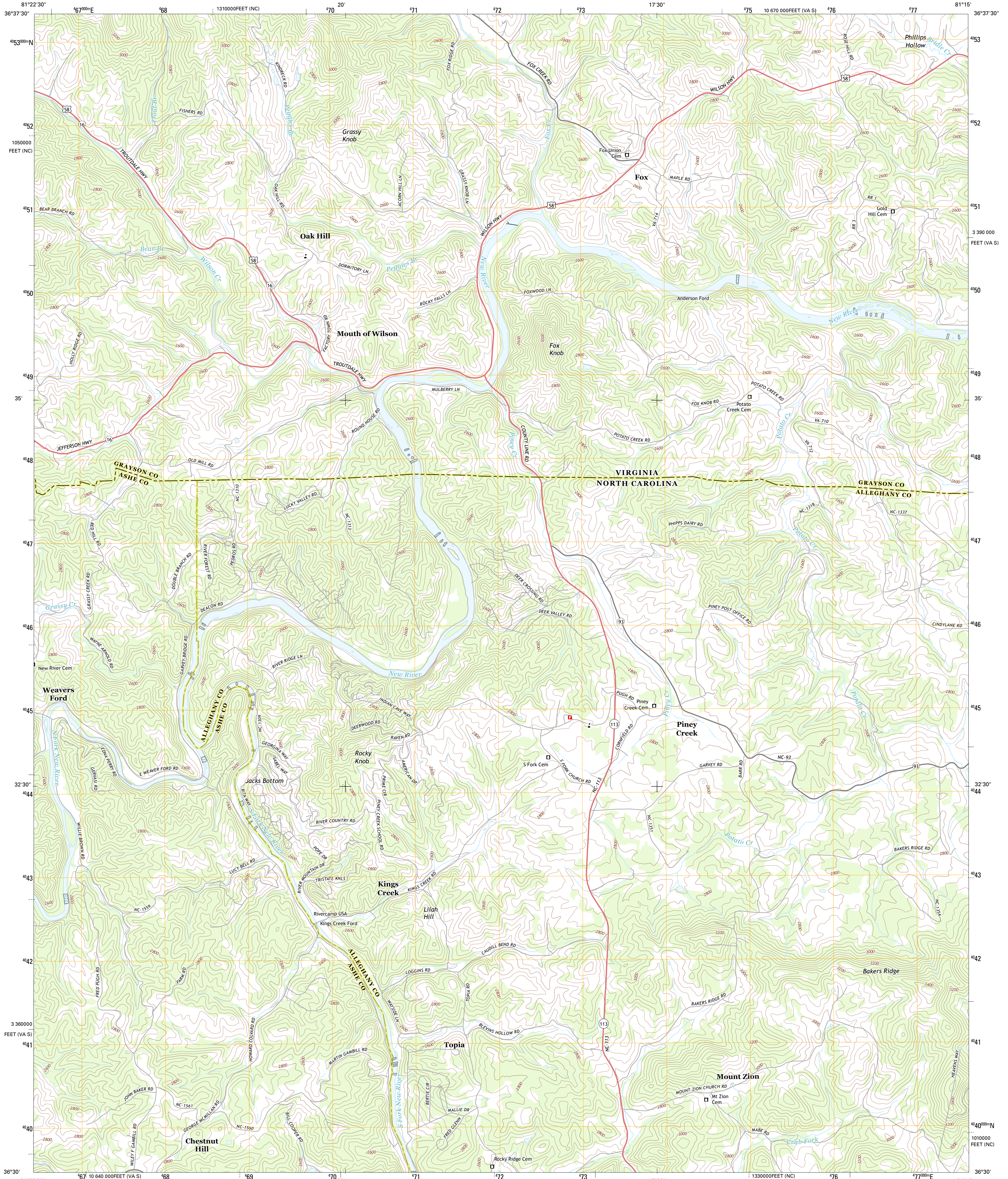




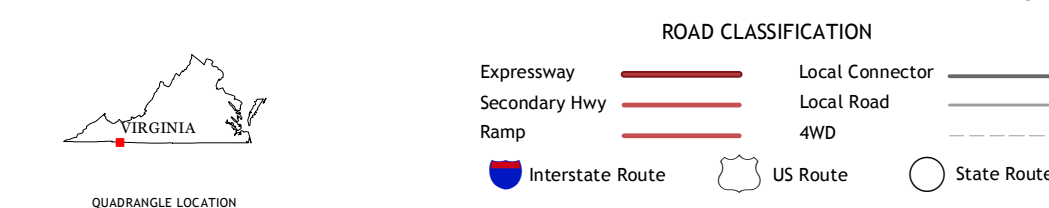
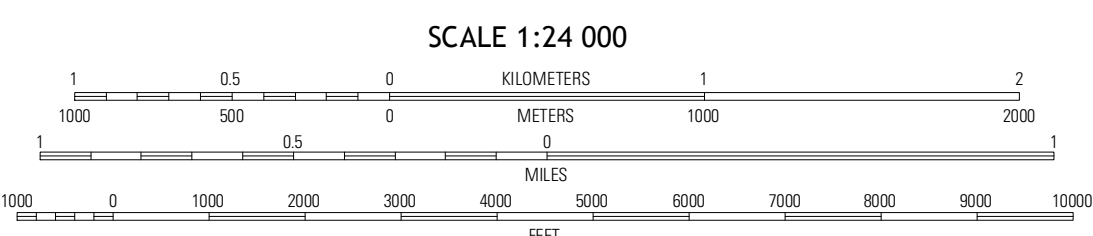
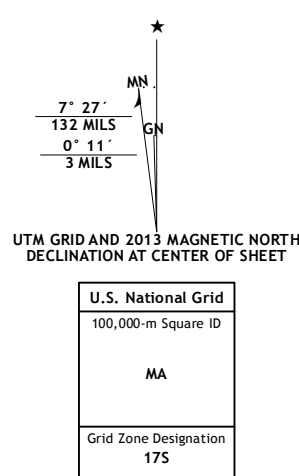
U.S. DEPARTMENT OF THE INTERIOR
U. S. GEOLOGICAL SURVEY



MOUTH OF WILSON QUADRANGLE
VIRGINIA-NORTH CAROLINA
7.5-MINUTE SERIES



Produced by the United States Geological Survey
North American Datum of 1983 (NAD83)
World Geodetic System of 1984 (WGS84) Projection and
1 000-meter grid: Universal Transverse Mercator, Zone 17S
10 000-foot ticks: North Carolina Coordinate System of 1983,
Virginia Coordinate System of 1983 (south zone)



QUADRANGLE LOCATION

Trout Dale	Middle Fox Creek	Elk Creek
Grassy Creek	Mouth of Wilson	Sparta West
Jefferson	Laurel Springs	Whitehead

CONTOUR INTERVAL 40 FEET
NORTH AMERICAN VERTICAL DATUM OF 1988

This map was produced to conform with the National Geospatial Program US Topo Product Standard, 2011. A metadata file associated with this product is draft version 0.6.11

MOUTH OF WILSON, VA-NC
2013

ADJOINING 7.5 QUADRANGLES