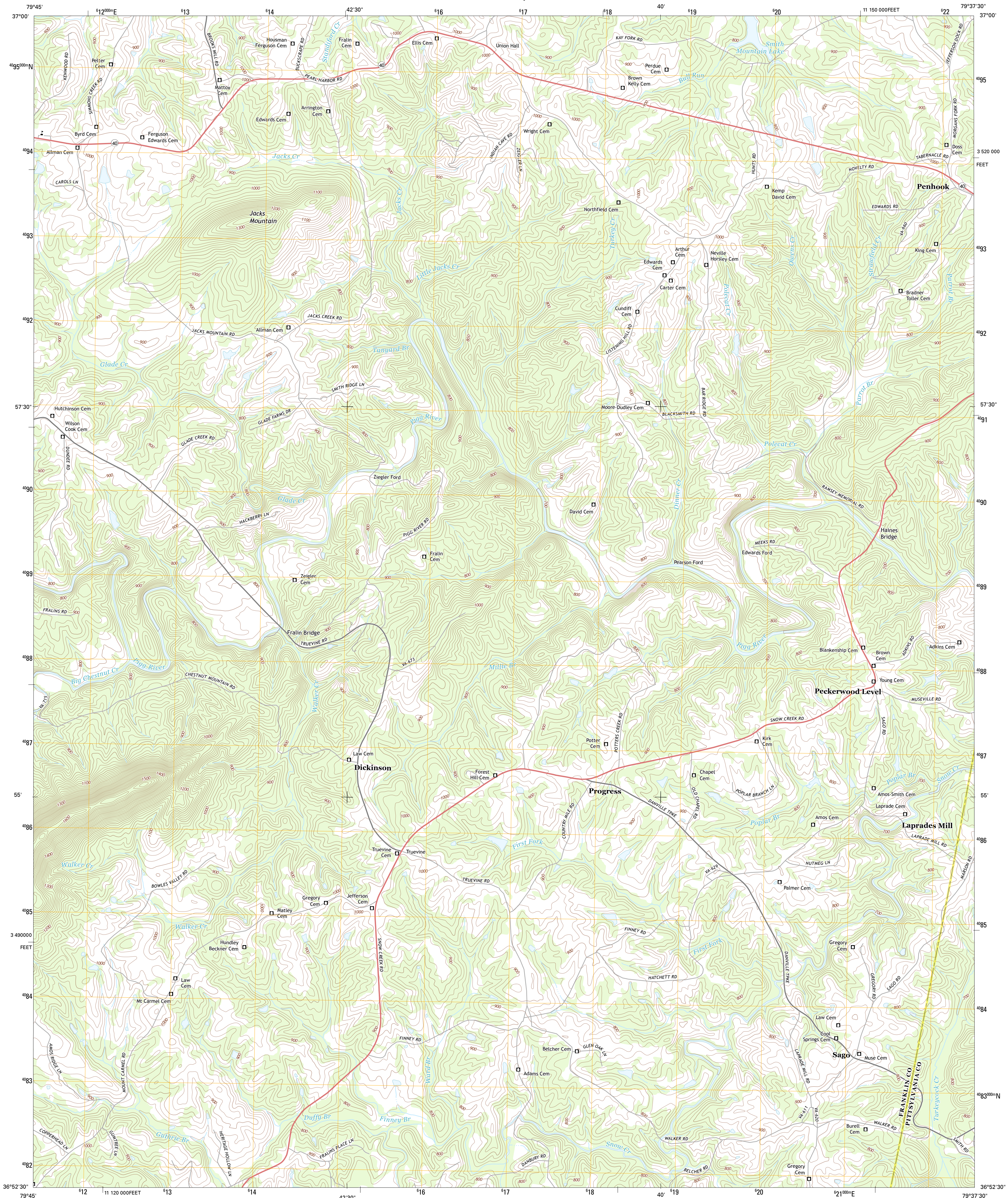




U.S. DEPARTMENT OF THE INTERIOR  
U. S. GEOLOGICAL SURVEY

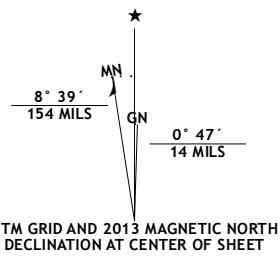


PENHOOK QUADRANGLE  
VIRGINIA  
7.5-MINUTE SERIES

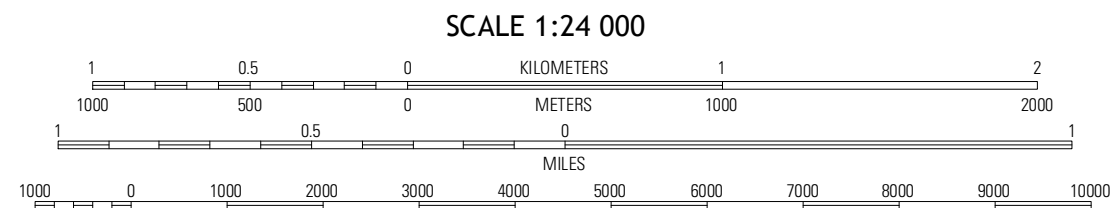


Produced by the United States Geological Survey  
North American Datum of 1983 (NAD83)  
World Geodetic System of 1984 (WGS84). Projection and  
1 000-meter grid: Universal Transverse Mercator, Zone 17S  
10 000-foot ticks: Virginia Coordinate System of 1983 (south  
zone)

Imagery.....NAIP, May 2013  
Roads.....©2006-2012 TomTom  
Names.....GNIS, 2013  
Hydrography.....National Hydrography Dataset, 2012  
Contours.....National Elevation Dataset, 2008  
Boundaries.....Census, IBWC, IBC, USGS, 1972 - 2012



| U.S. National Grid    |
|-----------------------|
| 100,000-m Square ID   |
| PA                    |
| Grid Zone Designation |
| 17S                   |



CONTOUR INTERVAL 20 FEET  
NORTH AMERICAN VERTICAL DATUM OF 1988  
This map was produced to conform with the  
National Geospatial Program US Topo Product Standard, 2011.  
A metadata file associated with this product is draft version 0.6.11



| QUADRANGLE LOCATION |                 |                    |
|---------------------|-----------------|--------------------|
| Redwood             | Moneta SW       | Smith Mountain Dam |
| Gladehill           | Penhook         | Sandy Level        |
| Snow Creek          | Mountain Valley | Callands           |

ADJOINING 7.5 QUADRANGLES

| ROAD CLASSIFICATION |                 |
|---------------------|-----------------|
| Expressway          | Local Connector |
| Secondary Hwy       | Local Road      |
| Ramp                | 4WD             |
| Interstate Route    | US Route        |
|                     | State Route     |

PENHOOK, VA  
2013