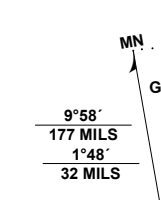


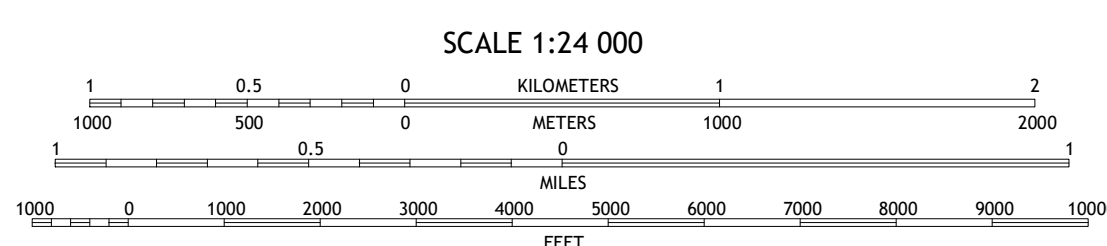
Produced by the United States Geological Survey

North American Datum of 1983 (NAD83)
World Geodetic System of 1984 (WGS84), Projection and
1 000-meter grid/Universal Transverse Mercator, Zone 17S18S
This map is not a legal document. Boundaries may be
generalized for this map scale. Private lands within government
reservations may not be shown. Obtain permission before
entering private lands.

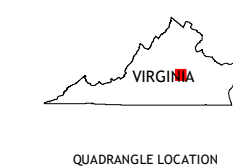
Imagery.....NAIP, August 2018 - August 2018
Roads.....U.S. Census Bureau, 2016
Names.....GNIS, 1979 - 2022
Hydrography.....National Hydrography Dataset, 2000 - 2020
Contours.....National Elevation Dataset, 2017
Boundaries.....Multiple sources; see metadata file 2019 - 2021
Wetlands.....FWS National Wetlands Inventory 2012



U.S. National Grid	
100,000 - in Square ID	
GB	17G
78W	
Grid Zone Designation	
17S	18S
78W	



CONTOUR INTERVAL 10 FEET
NORTH AMERICAN VERTICAL DATUM OF 1988
This map was produced to conform with the
National Geospatial Program US Topo Product Standard.



1	2	3
4	5	6
7	8	9

ADJOINING QUADRANGLES

- 1 Cartersville
- 2 Goochland
- 3 Perkiomville
- 4 Trenholm
- 5 Fine Creek Mills
- 6 Ballsville
- 7 Chula
- 8 Clayville

ROAD CLASSIFICATION	
	Expressway
	Secondary Hwy
	Ramp
	Local Connector
	Local Road
	4WD
	US Route
	State Route

